

- HEAVY POWER
- HUGE PARKING RATIO

- BUILDING EXPANSION POTENTIAL
- 0.6 MILES TO RT 3



100 POTASH HILL ROAD

TYNGSBOROUGH, MA

FOR SALE OR LEASE | 34,024 SF OFFICE BUILDING ON 4.58 AC

EXCLUSIVE AGENT



THE
STUBBLEBINE
COMPANY

CORPAC INTERNATIONAL

PROPERTY SUMMARY



PROPERTY DESCRIPTION

100 Potash Hill Road, Tyngsborough, MA offers a 34,024± SF Class A office building on 4.58 acres, available for sale or lease. Ideal for corporate, professional, or medical users, with convenient access to Routes 3, 3A, and 113.

PROPERTY HIGHLIGHTS

- Heavy power
- Excess land for potential expansion
- State of the art boardroom and conference rooms
- Upgraded lobby with granite floors and cherry wainscoting

BUILDING SPECIFICATIONS

Building Size:	34,024 SF
Lot Size:	4.58 AC
Construction:	Masonry, steel frame
Zoning:	I-1 Light Industrial
Exterior Doors:	1 dock height loading door
Stories:	2
HVAC:	19 Gas fires units
Age:	Renovated in 1998
Elevator:	One passenger elevator (2,500 lb)
Parking:	180 spaces
Utilities:	-Town water -Natural Gas -Private septic w/ ability to connect to town sewer -Backup generator
Power:	2,000 Amps, 480/277v, 3-phase
Sprinklers:	Wet

DEMOGRAPHICS

HIGHWAY PROXIMTY



0.5 MILES
2 MINUTES



1 MILE
3 MINUTES



12 MILES
8.4 MINUTES

NASHUA, NH
4 MILES | 5 MINS
BOSTON
38 MILES | 40 MINS

POPULATION	5 MILES	10 MILES	15 MILES
Total Population	114,879	383,192	901,053

HOUSEHOLDS & INCOME	5 MILES	10 MILES	15 MILES
Average HH Income	\$149,511	\$139,492	\$147,445
Average House Value	\$541,435	\$503,495	\$560,360

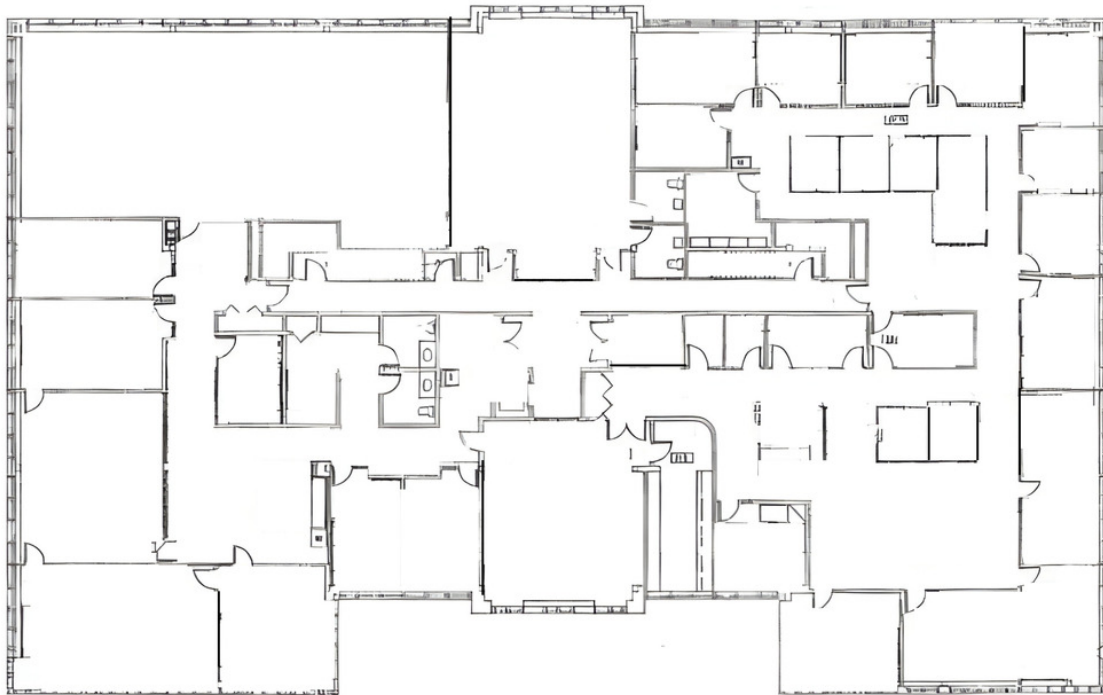
Demographics data derived from AlphaMap

TRAFFIC COUNTS	PER DAY
Westford Rd / Westech Dr NE	11,297
Westford Rd / Centercrest Dr S	9,675
Middlesex Rd / Westford Rd NW	8,497
Westford Rd	12,067
Westford Rd / Westford Rd NE	12,126
Pawtucket Blvd / Colony Hts NW	6,997
Ramp-Westford Rd to RT 3 NB	3,252
Ramp - RT 3 SB to Westford Rd / US Hwy 3	3,206
Ramp-Westford Rd to RT 3 SB / US Hwy 3	4,340

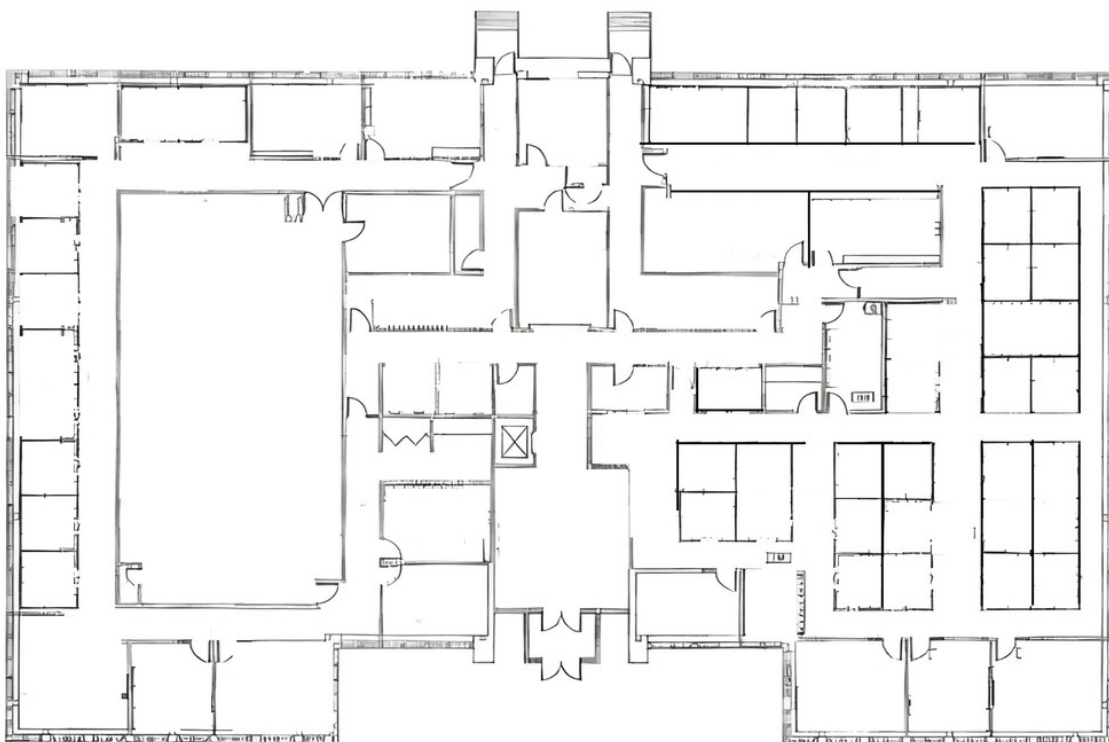




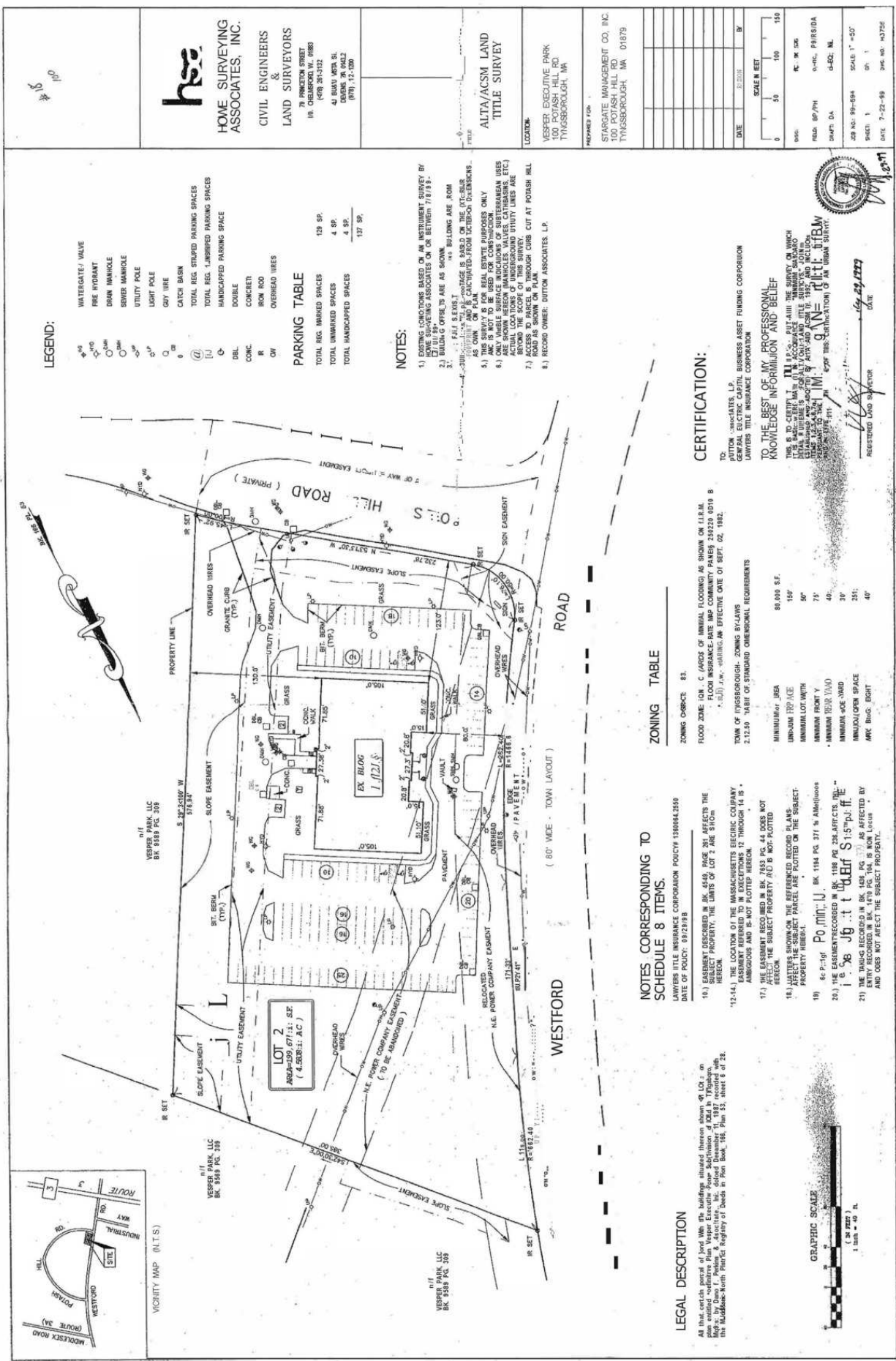
FLOOR PLAN



Second Floor



First Floor



HIGHWAY
PROXIMITY



0.5 MILES
2 MINUTES



1 MILE
3 MINUTES



12 MILES
8.4 MINUTES



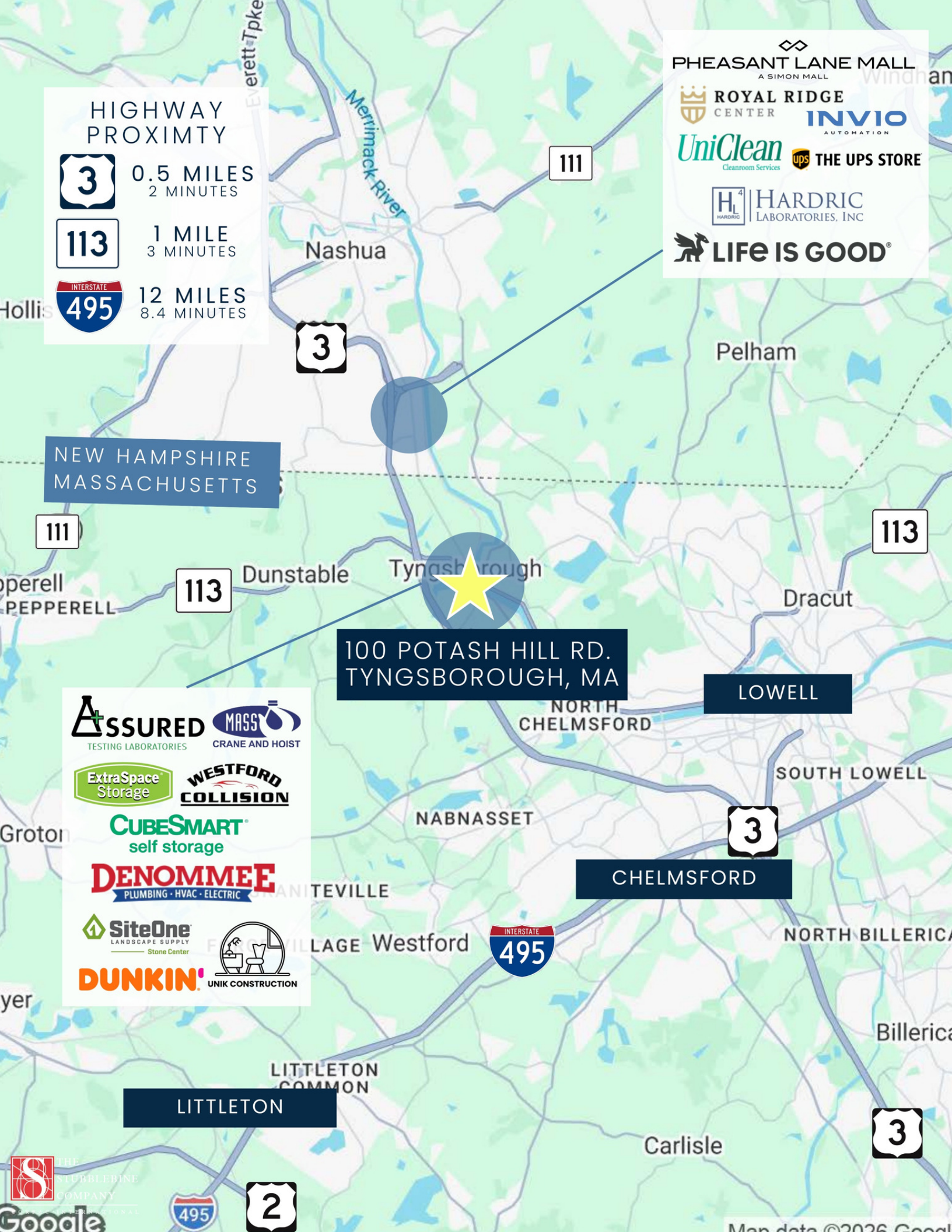
NEW HAMPSHIRE
MASSACHUSETTS

100 POTASH HILL RD.
TYNGSBOROUGH, MA

LOWELL

CHELMSFORD

LITTLETON



100 POTASH HILL ROAD

TYNGSBOROUGH, MA

FOR SALE OR LEASE | 34,024 SF OFFICE BUILDING ON 4.58 AC

RYAN PETRACO

631.707.2577

rpetraco@stubblebinecompany.com

AARON SMITH

978.654.0432

asmith@stubblebinecompany.com

JAMES STUBBLEBINE

617.592.3388

james@stubblebinecompany.com

DAVID STUBBLEBINE

617.592.3391

david@stubblebinecompany.com

CHLOE STUBBLEBINE

781.879.2543

chloe@stubblebinecompany.com

JOEY COHEN

617.817.0141

jcohen@stubblebinecompany.com

MICAH STUBBLEBINE

978.265.8101

micah@stubblebinecompany.com

We obtained the information above from sources we believe to be reliable. However, we have not verified its accuracy and make no guarantee, warranty or representation about it. It is submitted subject to the possibility of errors, omissions, change of price, rental or other conditions, prior sale, lease or financing, or withdrawal without notice. We include projections, opinions, assumptions or estimates for example only, and they may not represent current or future performance of the property. You and your tax and legal advisors should conduct your own investigation of the property and transaction.

EXCLUSIVE AGENT



THE
STUBBLEBINE
COMPANY

CORFAC INTERNATIONAL