

556 CHELMSFORD ST

LOWELL, MA

FOR SALE | 81-UNIT MULTIFAMILY DEVELOPMENT SITE

- 0.2 Miles to Lowell Connector
- 0.8 Miles to Route 3
- Zoning: Suburban Neighbor Multifamily: Allows apartment development by right

EXCLUSIVE AGENT



PROPERTY SUMMARY



PROPERTY DESCRIPTION

81-Unit Multifamily Development site For Sale

PROPERTY HIGHLIGHTS

- 81-Unit Multifamily Development Site
- 0.2 Miles to Lowell Connector
- 0.8 Miles to Route 3
- 1.7 Miles to Route 495
- Close proximity to Meadow Brook Retail Center, which includes retailers such as Target, Marshalls, GNC, Comcast Xfinity, and T-Mobile.
- Other nearby amenities include: Lowe's Home Improvement Store, 99s Restaurant, Chilis, Outback Steakhouse, Showcase Cinemas, and many others.
- The new zoning of suburban multifamily will allow for the development of multi-family housing on the site.

LOCATION DESCRIPTION

Quarter mile to the Lowell Connector and less than a mile to Route 3

PROPERTY SPECIFICATIONS

Lot Size: 2.08

Projected # of Units: 81

Current Zoning: Suburban Neighbor Multifamily: Allows apartment development by right

Sale Price: \$3,995,000

DEMOGRAPHICS	3 MILES	5 MILES	10 MILES
Total Households	50,283	77,002	179,671
Total Population	133,615	202,763	480,340
Average HH Income	\$82,973	\$95,454	\$114,249

SITE PLANS



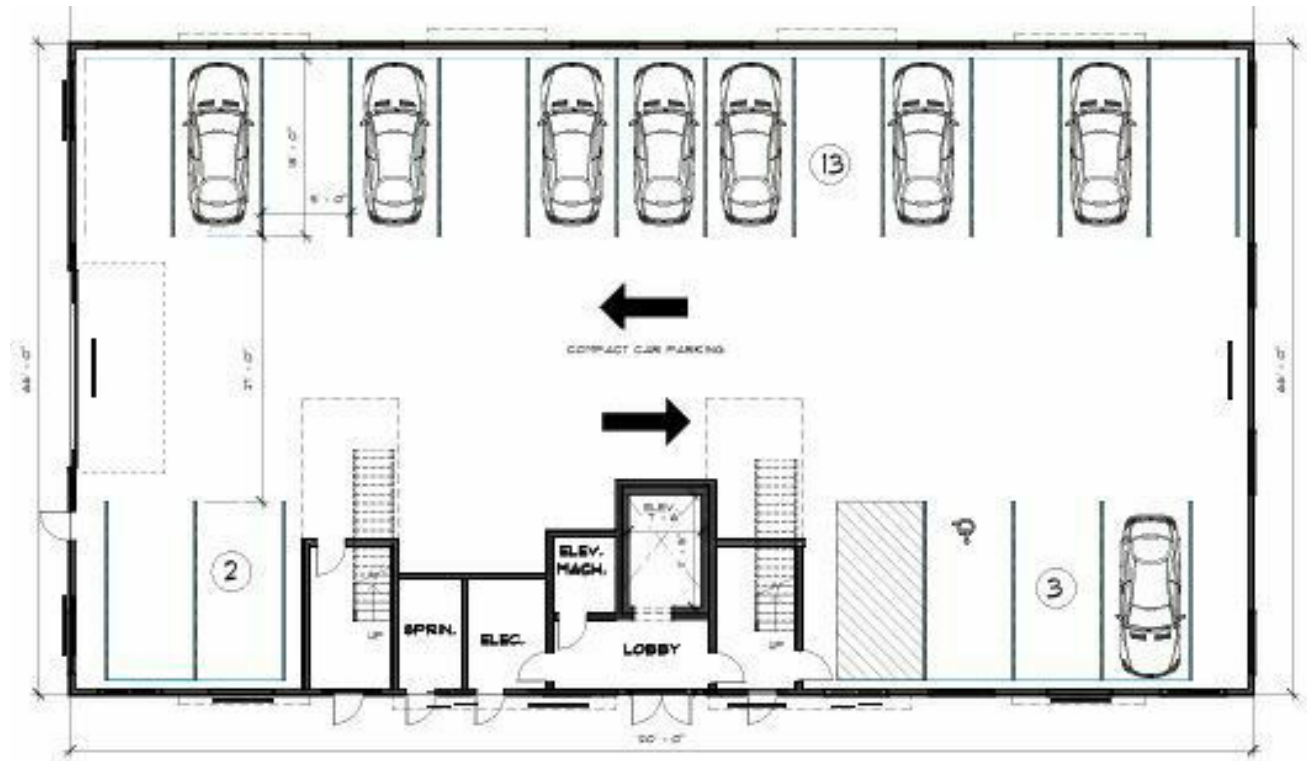
FLOOR PLANS



1 FRONT ELEVATION
1/8" = 1'-0"



2 LEFT ELEVATION
1/8" = 1'-0"



1 GARAGE LEVEL
1/8" = 1'-0"

FLOOR PLANS



1 F. 4TH FLOOR
1/8" = 1'-0"

HIGHWAY PROXIMITY



0.8 MILES
3 MINUTES



1.3 MILES
5 MINUTES



2.6 MILES
10 MINUTES

38

CENTRALVILLE

110

Lowell

THE ACRE

113

BELVIDE

BACK CENTRAL

SHOWCASE
CINEMAS

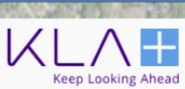


Westford St
HIGHLANDS



556 CHELMSFORD ST.
LOWELL, MA

INDUSTRIAL AREA



**THE MINI
STORAGE CENTER**
"A SPACE TO FIT YOUR NEEDS"



INDUSTRIAL AREA



LAMINATED
PLASTICS
DISTRIBUTORS & FABRICATORS



Chelmsford

129



THE
STUBBLEBINE
COMPANY

CORFAC INTERNATIONAL

556 CHELMSFORD ST

LOWELL, MA

FOR SALE | 81-UNIT MULTIFAMILY DEVELOPMENT SITE FOR SALE

NICK AWADA
978.799.7364
nawada@stubblebinecompany.com

DANNY CRUZ
978.305.0473
danny@stubblebinecompany.com

JAMES STUBBLEBINE
617.592.3388
james@stubblebinecompany.com

DAVID STUBBLEBINE
617.592.3391
david@stubblebinecompany.com

We obtained the information above from sources we believe to be reliable. However, we have not verified its accuracy and make no guarantee, warranty or representation about it. It is submitted subject to the possibility of errors, omissions, change of price, rental or other conditions, prior sale, lease or financing, or withdrawal without notice. We include projections, opinions, assumptions or estimates for example only, and they may not represent current or future performance of the property. You and your tax and legal advisors should conduct your own investigation of the property and transaction.

EXCLUSIVE AGENT



THE
STUBBLEBINE
COMPANY

CORPAC INTERNATIONAL