

STOP & SHOP

ExtraSpace
Storage

UNITED STATES
POSTAL SERVICE

POTOMAC
ELECTRIC

MAVERICK

ssensa

ABS
AUTOMOTIVE PARTS DISTRIBUTION

Bosse
SPORTS

ROUNDHEAD
BREWING CO.

ONE WESTINGHOUSE PLAZA

HYDE PARK, MA

FOR SALE | 78,314 SF INDUSTRIAL CONDO UNIT

- Located in the iconic former Westinghouse Complex
- 0.5 miles from Readville MBTA Station and Rail Yard

EXCLUSIVE AGENT



THE
STUBBLEBINE
COMPANY

CORPAC INTERNATIONAL



PROPERTY DESCRIPTION

78,314 +/- SF Industrial Condo Unit for Sale: Building D, Unit 8

PROPERTY HIGHLIGHTS

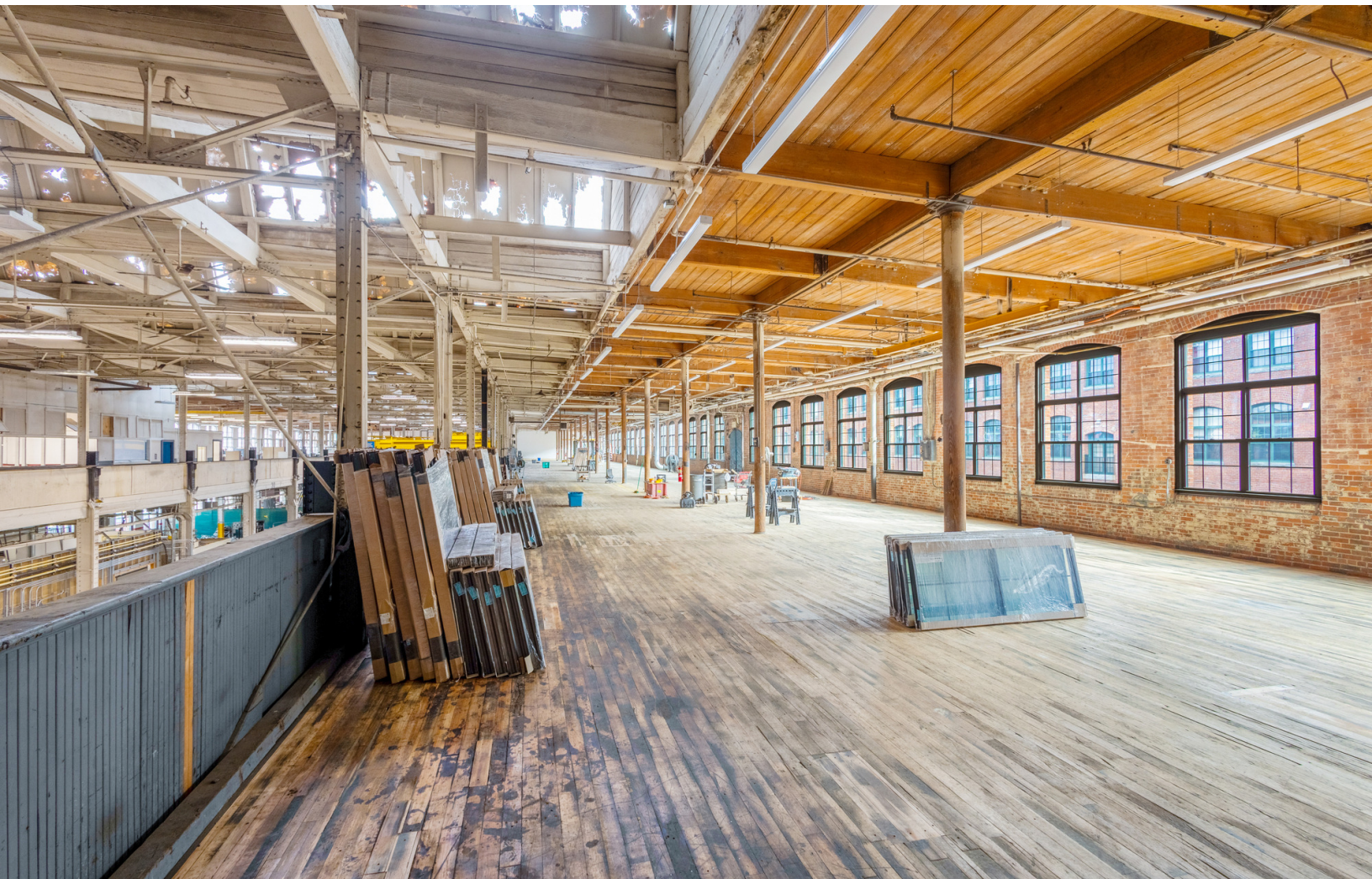
- Located in the iconic former Westinghouse Complex within Boston's city limits
- 0.5 miles to Readville MBTA Station and Rail Yard
- 3.0 miles to I-95
- 3.5 miles to I-95/I-93 Interchange

PROPERTY SPECIFICATIONS

Building Size:	78,314 SF
Ceiling Height:	Up to 35'
Cranes:	One (1) 15-Ton Overhead Crane
Power:	1000 amps
Drive-Ins:	Three (3)
Parking Spaces:	54
Utilites:	Town Sewer, Water, Gas
Sale Price:	Market

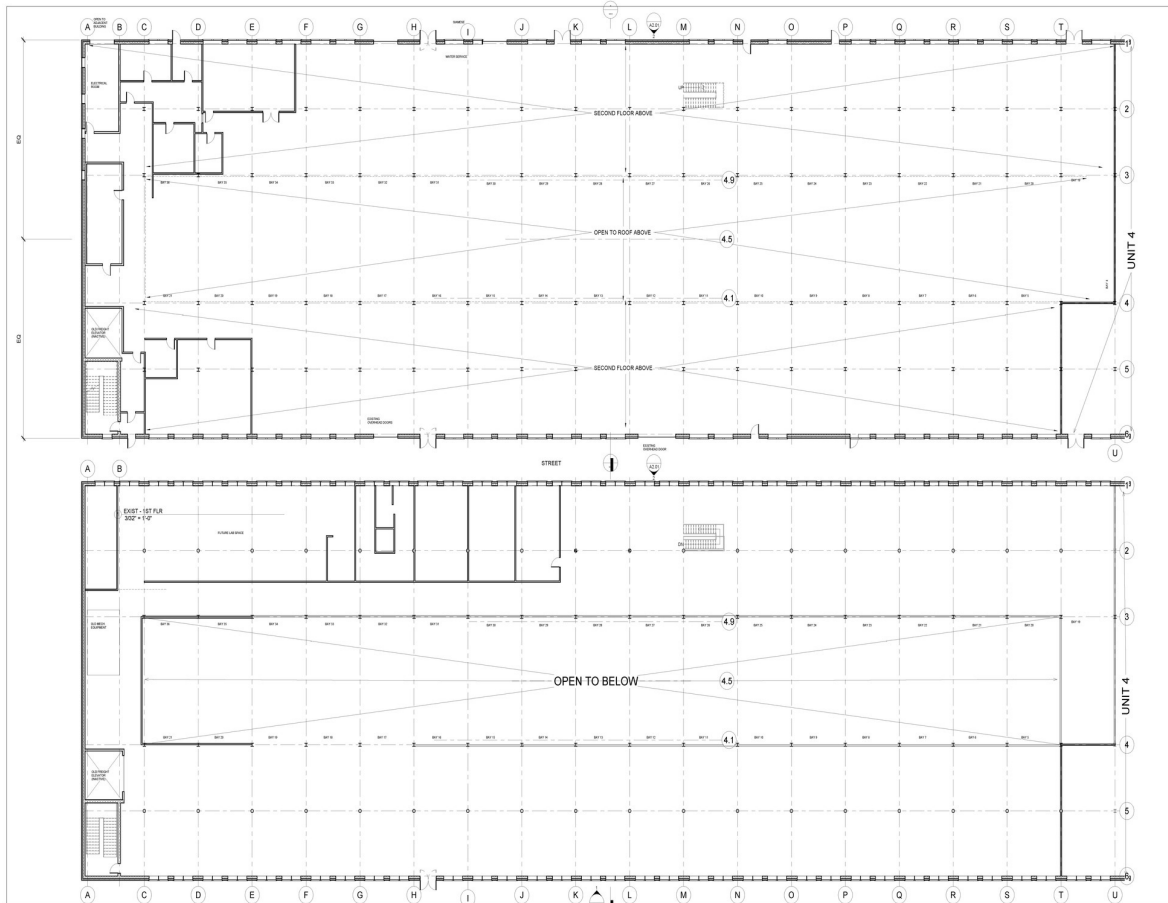
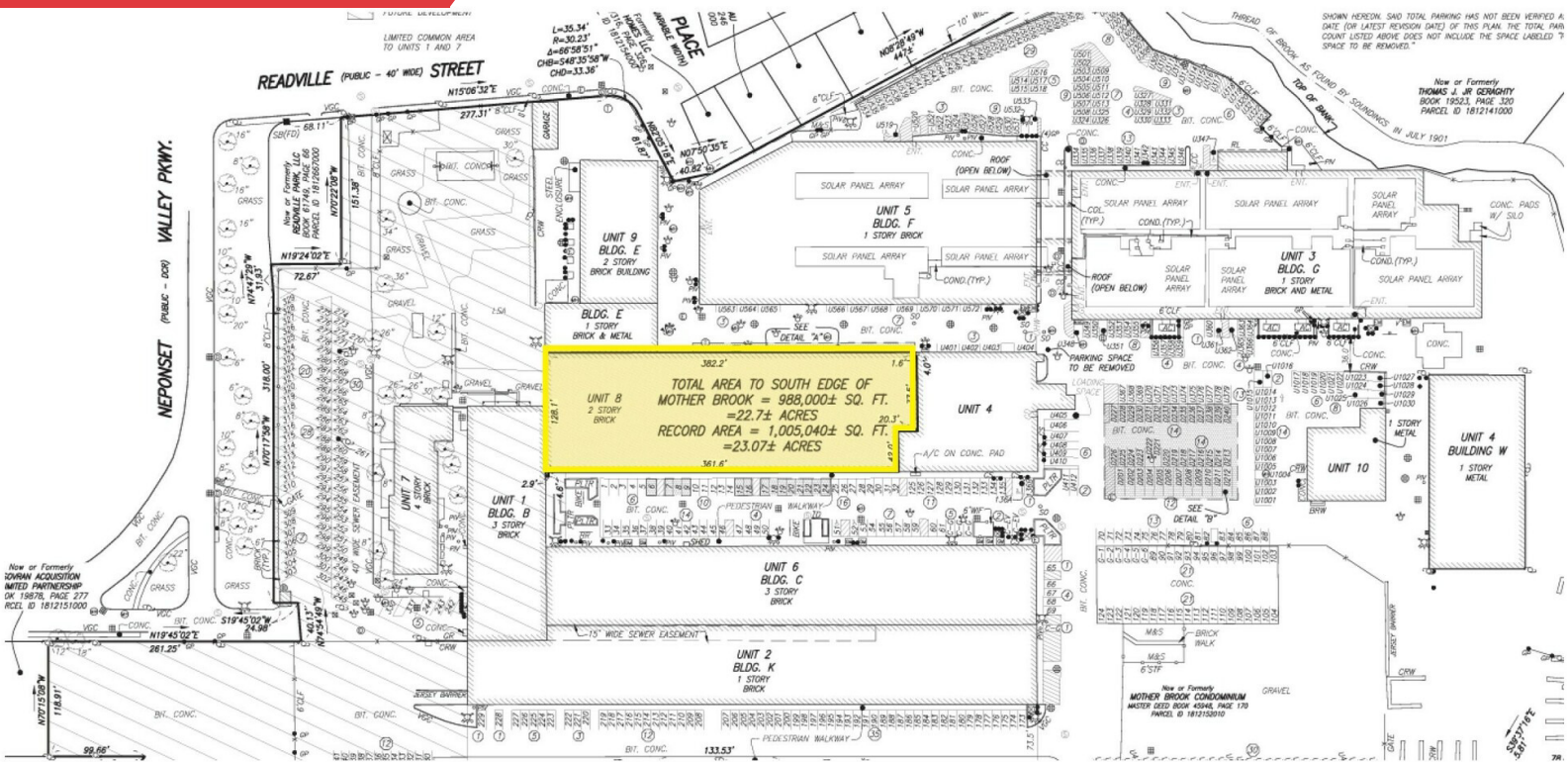
DEMOGRAPHICS	3 MILES	5 MILES	10 MILES
Total Households	43,284	124,422	622,613
Total Population	114,434	327,777	1,543,182
Average HH Income	\$150,162	\$149,704	\$159,641







FLOOR PLANS



ALT EXIST. 2ND FLR 302' x 10'		STEFANOV ARCHITECTS 433 WEST BROADWAY, SUITE 404 BOSTON, MA 02107 617-784-6646 INFO@STEFANOVARCH.COM		NEW SECOND FLOOR DECKS, ACCESSIBILITY AND NEW BATHROOMS		No. Description \$/sq.		EXISTING 1ST & 2ND FLOORS									
These drawings have been prepared for a particular client under contract only, with the distinct understanding that they are instruments of service and not the property of the architect. If these drawings or any part thereof are used in any matter without the written consent of the architect, the user becomes indebted to the architect for full compensation.				ONE WESTINGHOUSE PLAZA - BLDG D HYDE PARK, MA				<table border="1"> <tr> <td>Project number</td> <td>201011</td> </tr> <tr> <td>Date</td> <td>2/23/10 02:02</td> </tr> <tr> <td>Drawn by</td> <td>DJS</td> </tr> <tr> <td>Checked by</td> <td>DJS</td> </tr> </table>		Project number	201011	Date	2/23/10 02:02	Drawn by	DJS	Checked by	DJS
Project number	201011																
Date	2/23/10 02:02																
Drawn by	DJS																
Checked by	DJS																
								A1.01									
								Scale: 3/32" = 1'-0"									



NEWTON

BROOKLINE

Boston

International Airport

9

INTERSTATE 90

SOUTH BOSTON

ExtraSpace Storage

ABEX
Transportation | Warehousing | Logistics

PRIME STORAGE

U-HAUL®

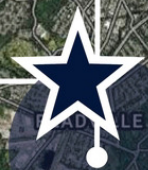
NEEDHAM

NEEDHAM JUNCTION

One Westinghouse Plaza, Hyde Park, MA

INTERSTATE 95

Dedham



138

28

QUINCY

QUINCY CENTER

SOUTH QUINCY

3

Westwood

ISLINGTON

NEPONSET

Norwood

1

CANTON

ExtraSpace Storage

MARBLE AND GRANITE, INC.

Public Storage

PODS

FM Approvals

TKE

dsg

UW

amazon

M-S WALKER
SINCE 1933

Braintree

SOUTH BRAINTREE

BRAINTREE HIGHLANDS

Randolph

24

HOLBROOK

Avon

STOUGHTON

DISTANCE TO		BOSTON	
	3.8 MILES		13 MILES
	12 MIN		50 MIN
	19 MILES		8 MILES
	35 MIN		20 MIN
	3 MILES		12 MILES
	10 MIN		25 MIN
			15.5 MILES
			30 MIN

ONE WESTINGHOUSE PLAZA

HYDE PARK, MA

FOR SALE | 78,314 +/- SF INDUSTRIAL CONDO UNIT

NICK AWADA

978.799.7364

nawada@stubblebinecompany.com

ZACK HARDY

978.758.9666

zhardy@stubblebinecompany.com

DAVID STUBBLEBINE

617.592.3391

david@stubblebinecompany.com

JAMES STUBBLEBINE

617.592.3388

james@stubblebinecompany.com

We obtained the information above from sources we believe to be reliable. However, we have not verified its accuracy and make no guarantee, warranty or representation about it. It is submitted subject to the possibility of errors, omissions, change of price, rental or other conditions, prior sale, lease or financing, or withdrawal without notice. We include projections, opinions, assumptions or estimates for example only, and they may not represent current or future performance of the property. You and your tax and legal advisors should conduct your own investigation of the property and transaction.

EXCLUSIVE AGENT



THE
STUBBLEBINE
COMPANY

CORFAC INTERNATIONAL