



235 ANDOVER ST

WILMINGTON, MA

FOR LEASE | 30,180 SF CLASS A INDUSTRIAL BUILDING ON 2.03 AC

- Located directly off of Route 125
- 1.1 Miles from Route 93
- 30' Clear Height
- At least 3 dock-locks

EXCLUSIVE AGENT



THE
STUBBLEBINE
COMPANY

CORPAC INTERNATIONAL

PROPERTY SUMMARY

6 Tailboard Docks

125

PROPERTY DESCRIPTION

30,180 SF Class A Industrial Building on 2.03 AC for Lease

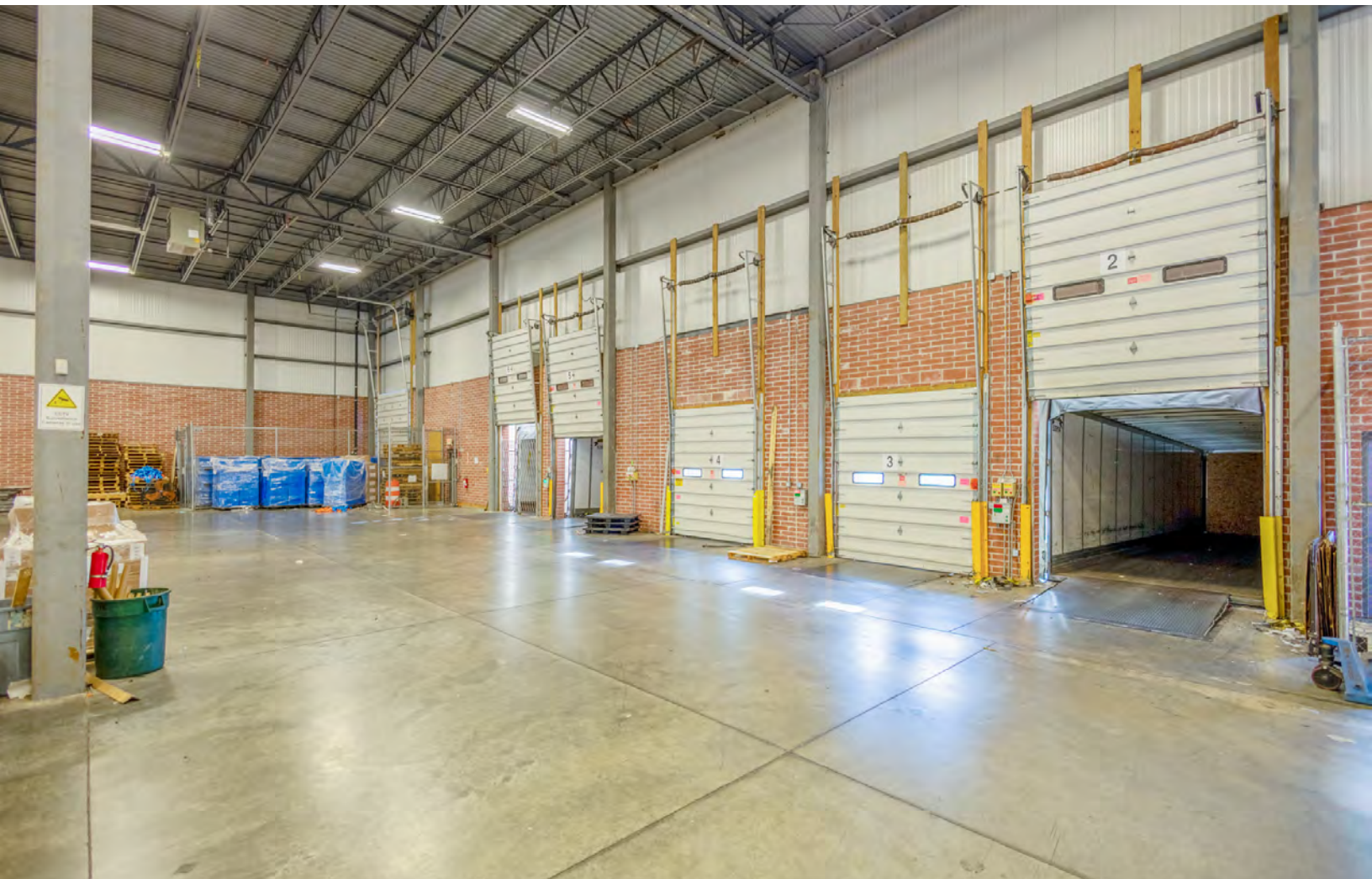
LOCATION HIGHLIGHTS

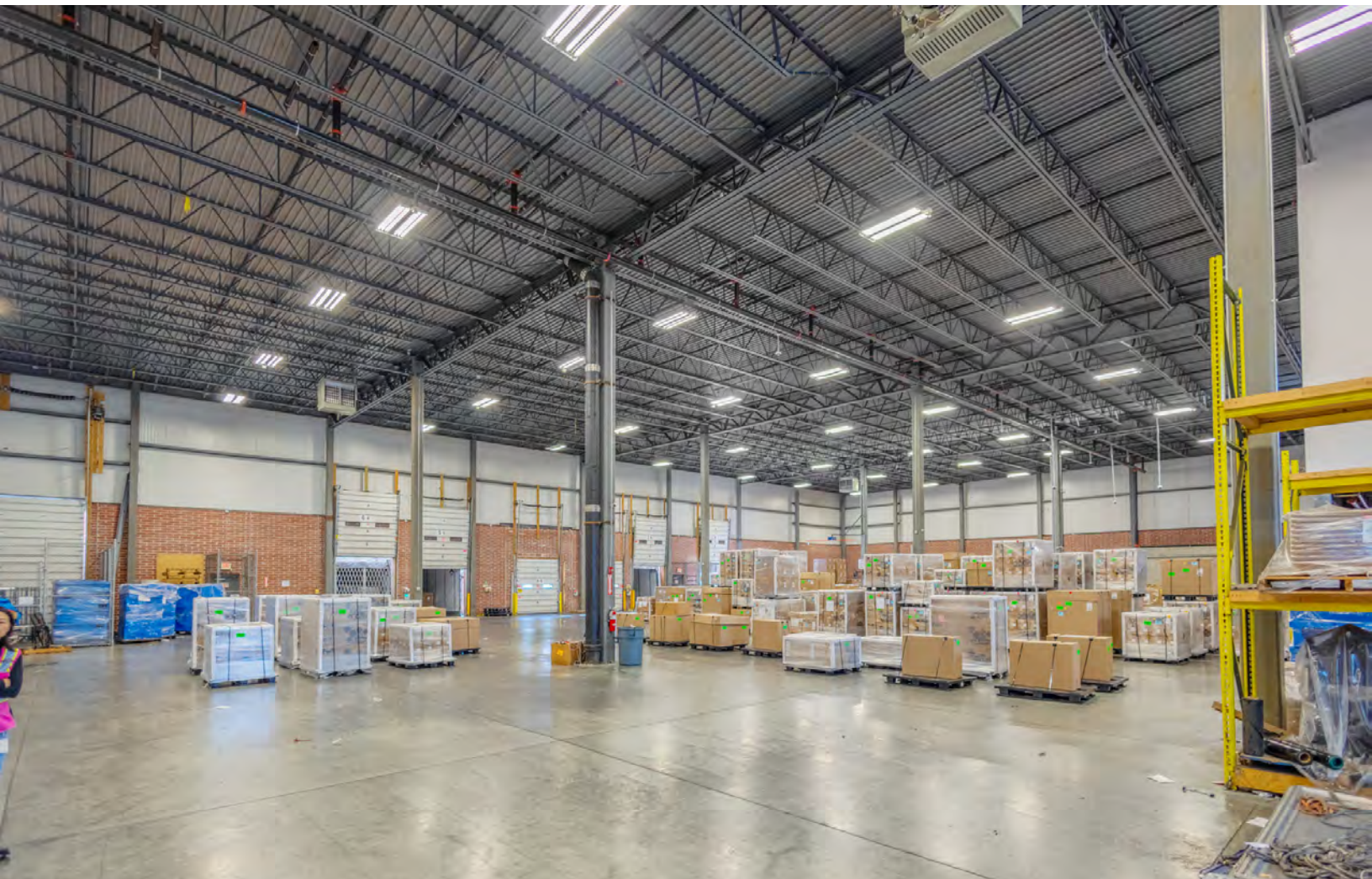
- Located directly off of Route 125
- 1.1 Miles to Route 93
- 1.9 Miles to Route 28

DEMOGRAPHICS	3 MILES	5 MILES	10 MILES
Total Households	11,670	34,748	225,321
Total Population	32,641	97,673	612,898
Average HH Income	\$198,692	\$195,260	\$151,995

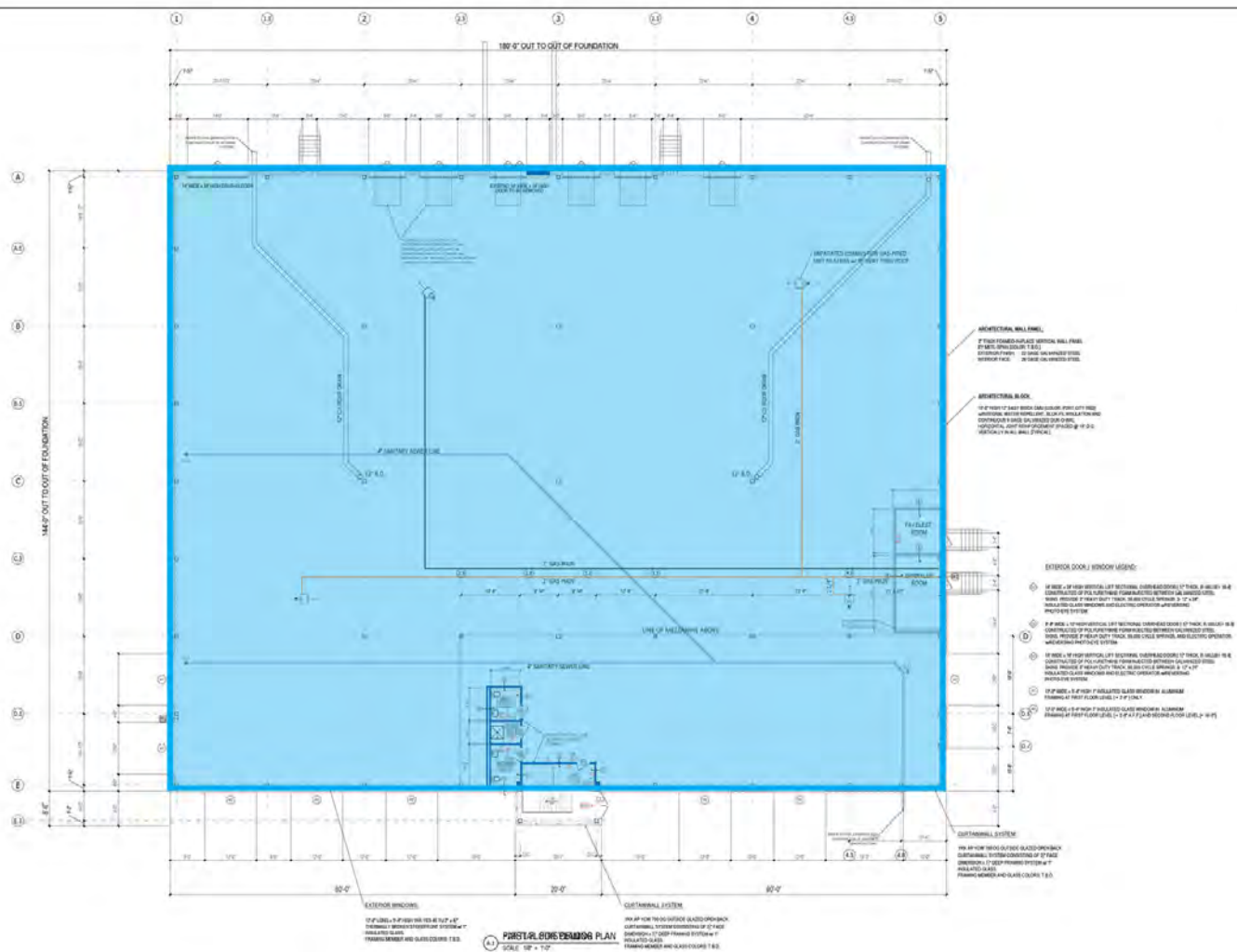
PROPERTY SPECIFICATIONS

Building Size:	30,180 SF
Available Space:	30,180 SF comprised of 25,920 SF Warehouse and 4,260 SF mezzanine office
Lot Size:	2.03 AC
Loading:	6 Tailboard
Drive In:	1
Construction:	Reinforced Concrete
Column Spacing:	36' x 45'
Year Built:	2013
Sprinklers:	Wet
Zoning:	I
Clear Height:	30'
Parking Spaces:	20
Utilities:	Heating - Gas, Lighting
Lease Rate:	Market





FLOOR PLAN

[illegible]

PROPOSED BUILDING
25 ANDOVER STREET
WASHINGTON, DC 20001

FIRST FLOOR PLAN

0.000	0.000
-------	-------

4470	4480
4490	4500

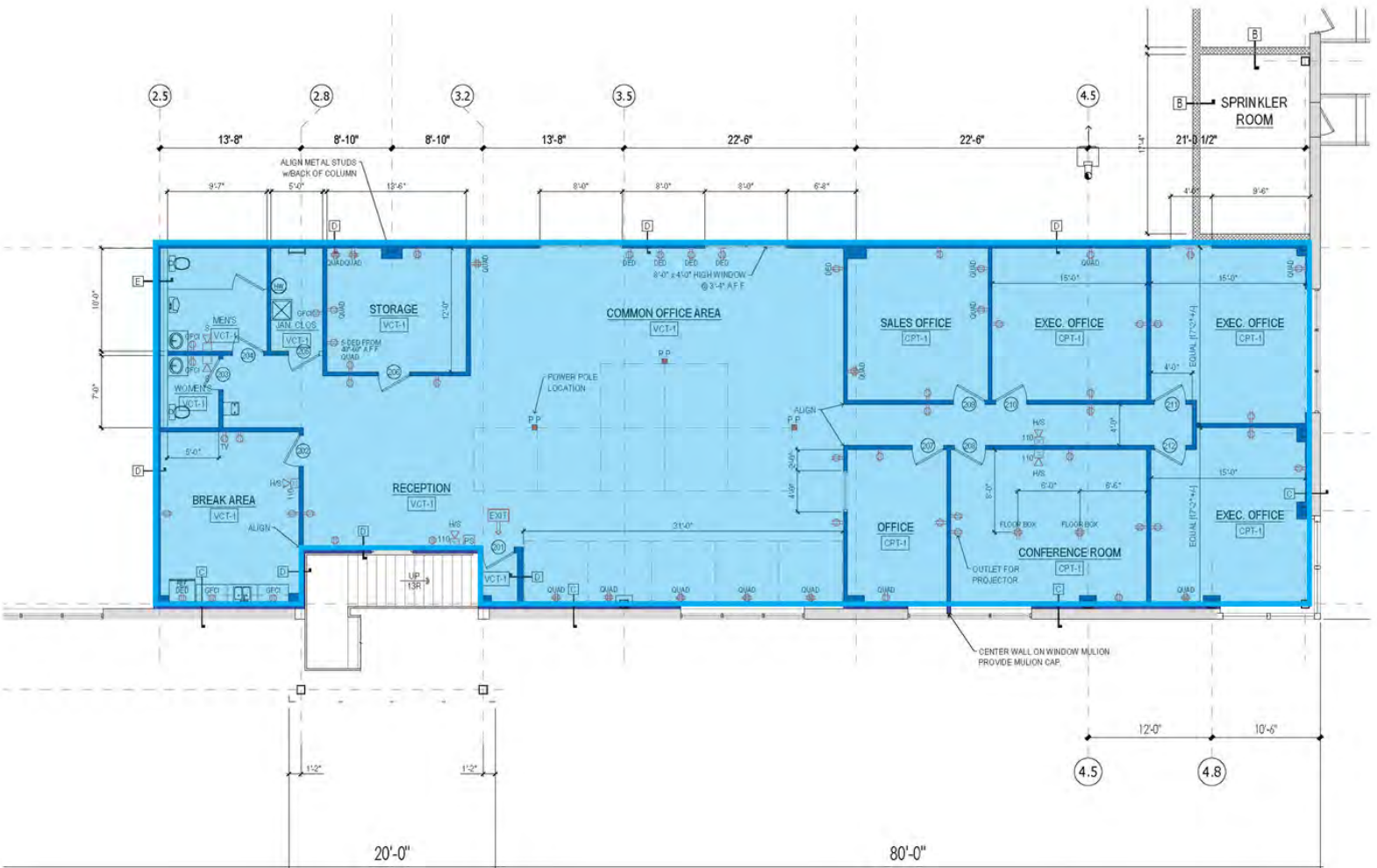
PROJECT LEADER

1290

19

A.2

MEZZANINE FLOOR PLAN



A.1 MEZZANINE FLOOR PLAN

SCALE: 1/8" = 1'-0"

ALL INTERIOR PARTITIONS TO BE TYPE "F" UNLESS NOTED OTHERWISE

DISTANCE TO



0.3 MILES
1 MIN



1.1 MILES
4 MIN



2.3 MILES
4 MIN



TERADINE



PAPER CORPORATION



PACK
SELF STORAGE
CLIMATE CONTROLLED - DIRECT ACCESS



MITSUBISHI
CHEMICAL
GROUP

Monks Manufacturing



Stafford
COLLARS, COUPLINGS & UNIQUE COMPONENTS

ne-eco

235 Andover St. Wilmington, MA



ANALOG
DEVICES

mks



Raytheon



CRYSTAL

FERGUSON



amazonrobotics

FedEx
Freight

TERADYNE

U-HAUL®



FERGUSON

Mass Pipeline Services Inc.

235 ANDOVER ST

WILMINGTON, MA

FOR LEASE | 30,180 SF CLASS A INDUSTRIAL BUILDING ON 2.03 AC

JAMES STUBBLEBINE

617.592.3388

james@stubblebinecompany.com

DAVID STUBBLEBINE

617.592.3391

david@stubblebinecompany.com

SUMMER STUBBLEBINE

781.783.7903

summer@stubblebinecompany.com

We obtained the information above from sources we believe to be reliable. However, we have not verified its accuracy and make no guarantee, warranty or representation about it. It is submitted subject to the possibility of errors, omissions, change of price, rental or other conditions, prior sale, lease or financing, or withdrawal without notice. We include projections, opinions, assumptions or estimates for example only, and they may not represent current or future performance of the property. You and your tax and legal advisors should conduct your own investigation of the property and transaction.

EXCLUSIVE AGENT



THE
STUBBLEBINE
COMPANY

CORFAC INTERNATIONAL