



660 SOUTH UNION ST.

LAWRENCE, MA

16,500 SF INDUSTRIAL/RETAIL BUILDING ON 1.6 AC

- For Lease
- Subdividable Building
- 1.6 Paved Acres
- 0.8 Miles to Route 495
- Excellent IOS Site



THE
STUBBLEBINE
COMPANY

CORFAC INTERNATIONAL

PROPERTY SUMMARY



PROPERTY DESCRIPTION

Situated just off Route 495 on the Lawrence/Andover Line on 1.6 paved acres, 660 South Union St. offers a 16,500 SF Industrial building on an oversized lot, ideally suited for autobody, auto collision, dealership, manufacturing, warehousing, distribution, or flex-space users.

This property has long served as a busy hub for Maaco Car Painting and Enterprise Rent-A-Car, two nationally recognized brands known for high customer traffic and consistent demand. Their decades-long presence at this address speaks volumes about the viability and strength of the location in supporting automotive services.

PROPERTY HIGHLIGHTS

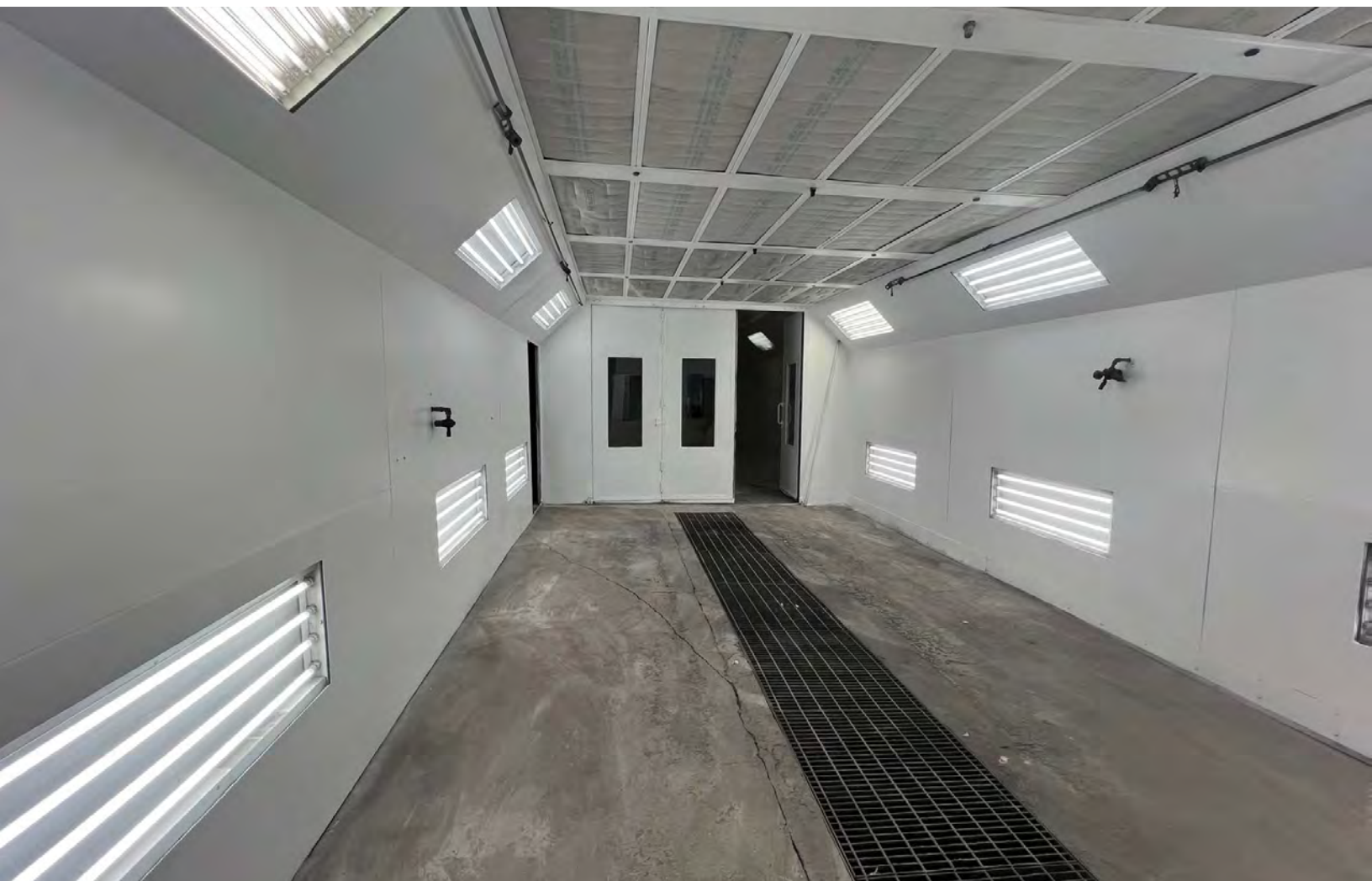
- 8 Drive in Doors
- First Class Downdraft Paint Booth
- Fireproof Paint Mixing Room
- Paint Station, Gas Oven, Two Compressors, 1 (one) Lift Machine, In-Ground Car Wash Tank (equipment sold separately as an asset)
- Showroom, Private Built Out Offices, 4+ Bathrooms, Kitchen, Waiting Area
- Strategic location just minutes from I-495, Route 114, and the New Hampshire border
- Zoning flexibility ideal for a wide range of commercial uses

PROPERTY SPECIFICATIONS

Building Size:	16,500 SF
Lot Size:	1.6 AC
Ceiling Height:	14'9"
Zoning:	Industrial
Garage Doors:	8 (12' x 16')
Available for Lease:	8,500-14,000 SF
Rental Rate:	\$30/SF NNN
Sale Price:	\$5,950,000

TRAFFIC COUNT S. UNION ST:

- North of Shepley St: 11,116 AADT (2024)
- South of Wedgewood Rd: 5,808 AADT (2024)



CENTURY SPACE
ECO-FRIENDLY SELF STORAGE
With Carbon Footprint Facility

M&A AEC

USPS.COM

ExtraSpace Storage VPT COMPONENTS

LAWRENCE



28

INTERSTATE 495

RMS Howell

EVERSOURCE

ACE SOLAR

CHARM SCIENCES INC

Preddio Technologies

CROSSWAY HOMECARE

660 S. Union St, Lawrence, MA

SHAWSHEEN VILLAGE HISTORIC DISTRICT

Unite Eastern GARAGE DOOR

NEUCO

SAWTECH METAL CUTTING SPECIALISTS

JVJ Solutions group

ASAHI/AMERICA Your Experts in Plastics

GIC GENERAL INSULATION COMPANY, INC.

mks

NE NorthEast Electrical A Sonenar Company

IRPP

MARKET BASKET

VALLEY RINKS

Holiday Inn

Marshalls

Advance Auto Parts

WHOLE FOODS MARKET

DUNKIN'

Santander

SUNOCO

Stop&Shop

DISTANCE TO

INTERSTATE 133	2.7 MILES 7 MIN
ROUTE 495	0.6 MILES 1 MIN
ROUTE 28	0.7 MILES 1 MIN
ROUTE 93	3.4 MILES 5 MIN

133

660 SOUTH UNION ST.

LAWRENCE, MA

FOR LEASE | 16,500 SF INDUSTRIAL BUILDING ON 1.6 AC +/-

JAMES STUBBLEBINE

617.592.3388

james@stubblebinecompany.com

DAVID STUBBLEBINE

617.592.3391

david@stubblebinecompany.com

SUMMER STUBBLEBINE

781.783.7903

summer@stubblebinecompany.com

We obtained the information above from sources we believe to be reliable. However, we have not verified its accuracy and make no guarantee, warranty or representation about it. It is submitted subject to the possibility of errors, omissions, change of price, rental or other conditions, prior sale, lease or financing, or withdrawal without notice. We include projections, opinions, assumptions or estimates for example only, and they may not represent current or future performance of the property. You and your tax and legal advisors should conduct your own investigation of the property and transaction.



THE
STUBBLEBINE
COMPANY

CORFAC INTERNATIONAL