



25 NIMBLE HILL RD

NEWINGTON, NH

FOR LEASE | 24,270 SF INDUSTRIAL SPACE AVAILABLE

- 2.8 Miles to Route 4
- Located within Pease Industrial Area
- Two (2) Tailboard Docks
- 15' Clear
- Heavy Power



**THE
STUBBLEBINE
COMPANY**

CORFAC INTERNATIONAL

PROPERTY SUMMARY



PROPERTY DESCRIPTION

138,897 SF Industrial Building on 21.22 AC for Lease

PROPERTY HIGHLIGHTS

- 2.8 Miles to Route 4
- 4.3 Miles to Route 16
- 9.3 Miles to Route 93

DEMOGRAPHICS	3 MILES	5 MILES	10 MILES
Total Households	3,981	17,604	56,228
Total Population	9,082	39,050	134,611
Average HH Income	\$126,694	\$137,649	\$138,968

PROPERTY SPECIFICATIONS

Building Size:	138,897 SF
Available SF:	24,270 SF
Lot Size:	21.22 AC
Docks:	2 Tailboards
Clear Height:	15'
Sprinklers:	Wet
Power:	800 - 1,600a/208 - 480v 3p Heavy
Utilites:	Gas - Natural, Sewer - City, Water - City
Columns:	30'w x 40'd
Lease Rate:	Market



25 Nimble Hill Road, Newington, NH

NEWINGTON

DISTANCE TO



6.8 MILES
11 MIN



4.3 MILES
8 MIN



7 MILES
12 MIN



7.4 MILES
12 MIN



exactengineering

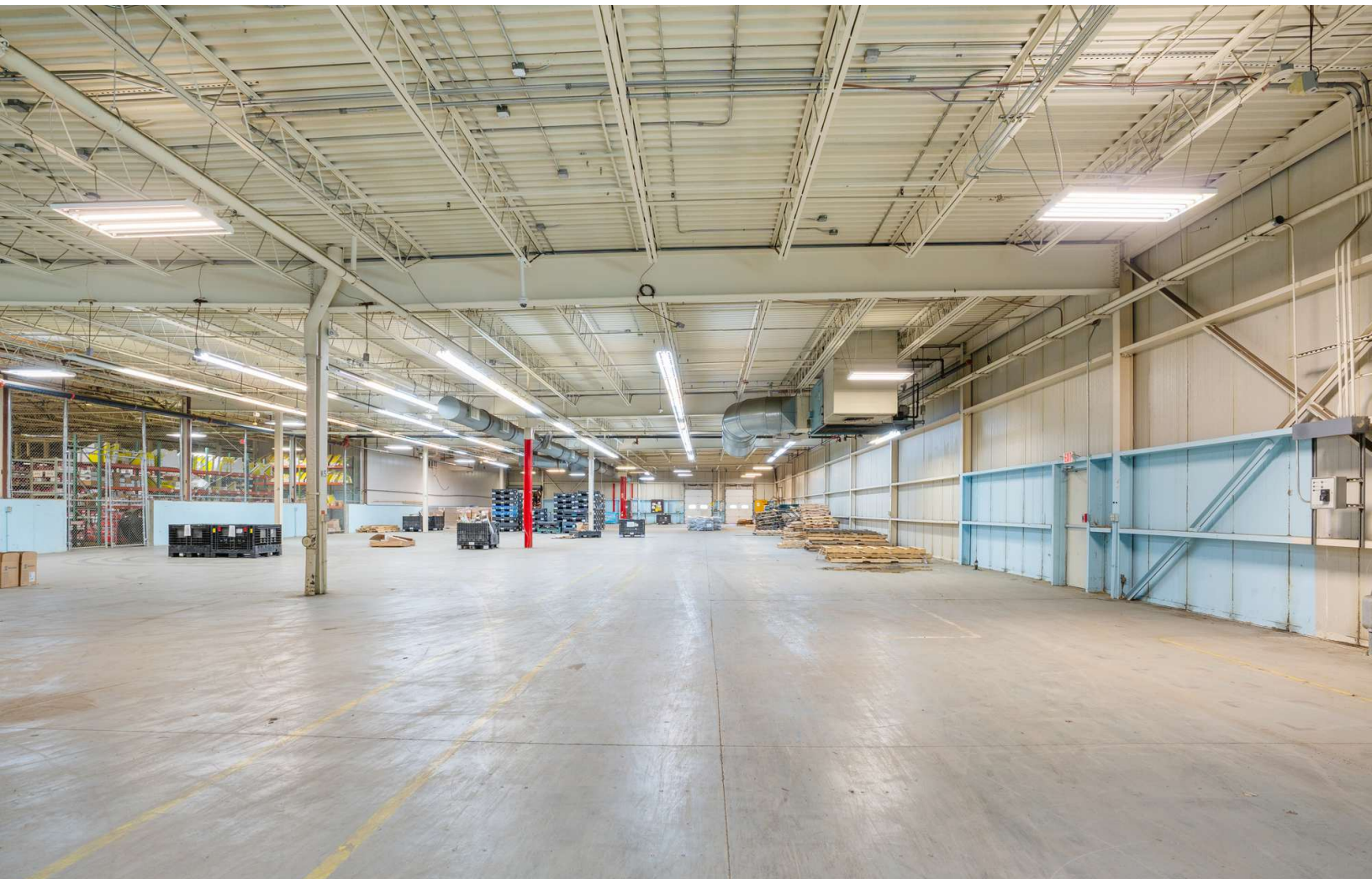


A Sonepar Company



AIR GUARD
GoANG.com • 800-TO-GO-ANG





25 NIMBLE HILL RD

NEWINGTON, NH

FOR LEASE | 24,270 SF INDUSTRIAL BUILDING ON 21.22 AC

DAVID STUBBLEBINE

617.592.3391

david@stubblebinecompany.com

JAMES STUBBLEBINE

617.592.3388

james@stubblebinecompany.com

RYAN PETRACO

631.707.2577

rpetraco@stubblebinecompany.com

AARON SMITH

978.654.0432

asmith@stubblebinecompany.com

We obtained the information above from sources we believe to be reliable. However, we have not verified its accuracy and make no guarantee, warranty or representation about it. It is submitted subject to the possibility of errors, omissions, change of price, rental or other conditions, prior sale, lease or financing, or withdrawal without notice. We include projections, opinions, assumptions or estimates for example only, and they may not represent current or future performance of the property. You and your tax and legal advisors should conduct your own investigation of the property and transaction.



THE
STUBBLEBINE
COMPANY

CORFAC INTERNATIONAL