

270 CONCORD RD

BILLERICA, MA

FOR SALE | 2.12 AC LAND SITE

- 0.3 Miles to Route 3
- 1.2 Miles to Route 4
- 3.7 Miles to Route 225



THE
STUBBLEBINE
COMPANY

CORFAC INTERNATIONAL

PROPERTY SUMMARY



PROPERTY DESCRIPTION

2.12 AC Land Site for Sale

LOCATION DESCRIPTION

0.3 Miles to Route 3

1.2 Miles to Route 4

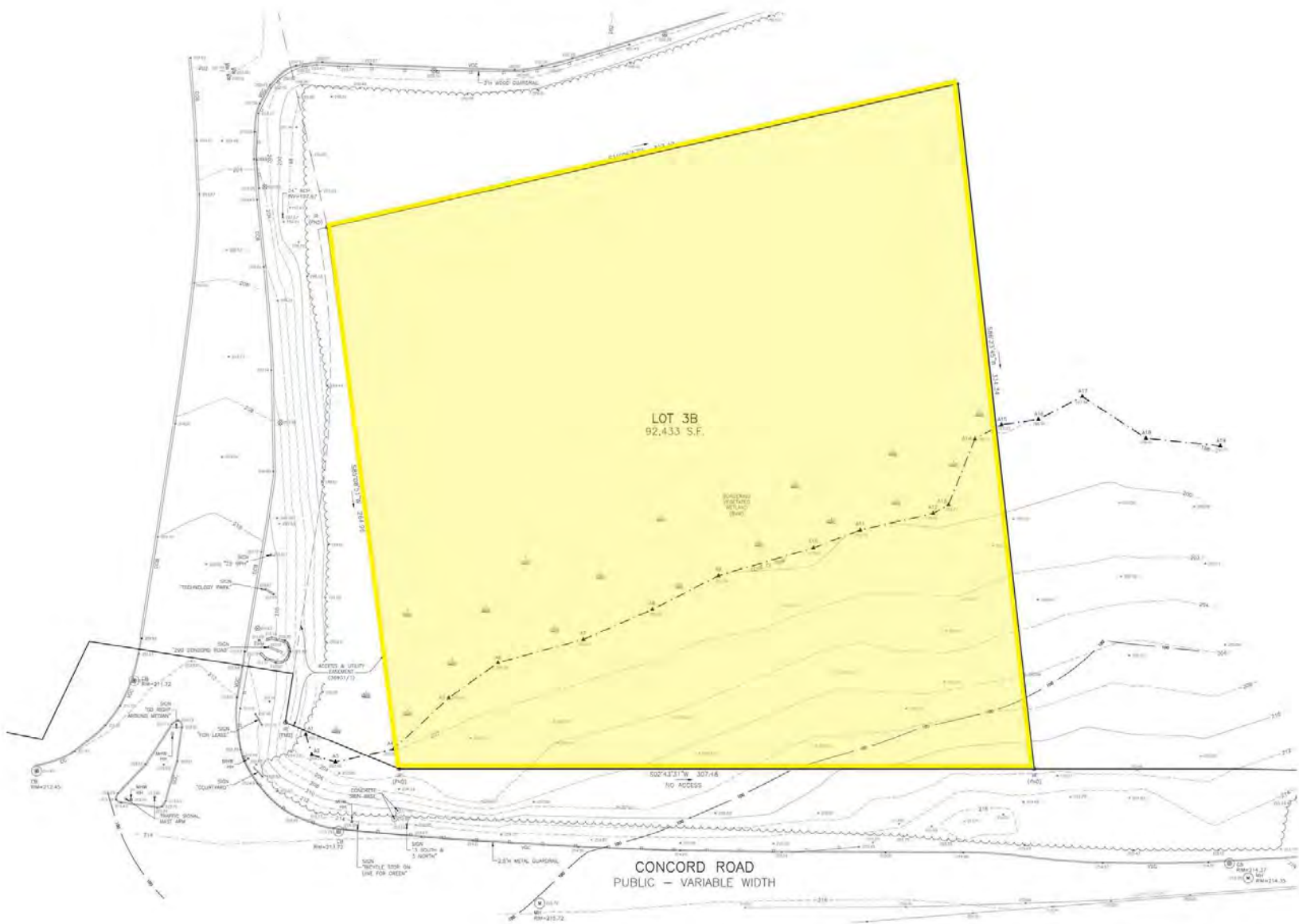
3.7 Miles to Route 225

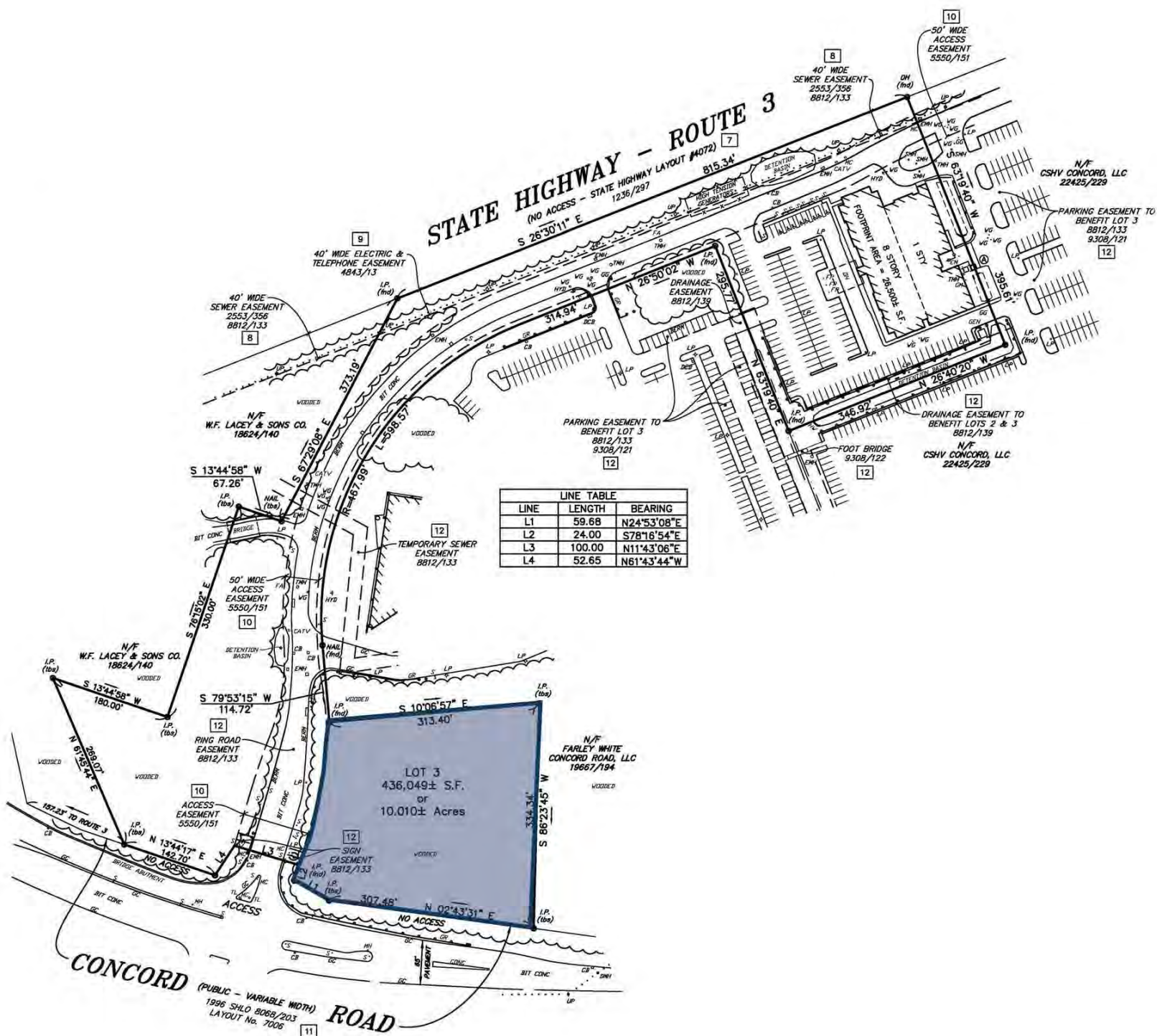
PROPERTY SPECIFICATIONS

Lot Size:	2.12 +/- AC
Sale Price:	\$950,000
Zoning:	Industrial (I)

DEMOGRAPHICS	3 MILES	5 MILES	10 MILES
Total Households	12,872	34,373	217,231
Total Population	35,715	95,843	591,464
Average HH Income	\$173,998	\$187,073	\$179,858

SITE PLANS





4

ThermoFisher
SCIENTIFIC

ExtraSpace
Storage



GRANITE
DESIGNS



Independent
ELECTRIC SUPPLY

129

BILLERICA



TELEDYNE
TECHNOLOGIES
INCORPORATED

Anokiwave

mmW Solutions. Enabling a new world

BOSTON
MATERIALS

Entegris

270 Concord Rd, Billerica, MA

3

SPRYTE
MEDICAL

infraredx™

A NIPRO COMPANY

aspentech

225

BEDFORD

Blue Sky
CENTER

ORACLE

VulcanForms™
Accelerating Innovation

Keurig
DrPepper

95

DISTANCE TO



6.2 MILES
7 MIN



0.7 MILES
3 MIN

Laurence G.
Hanscom Field



HANSCOM AFB

270 CONCORD RD

BILLERICA, MA

FOR SALE | 2.12 AC LAND SITE

CHLOE STUBBLEBINE

781.879.2543

chloe@stubblebinecompany.com

SUMMER STUBBLEBINE

781.783.7903

summer@stubblebinecompany.com

DAVID STUBBLEBINE

617.592.3391

david@stubblebinecompany.com

We obtained the information above from sources we believe to be reliable. However, we have not verified its accuracy and make no guarantee, warranty or representation about it. It is submitted subject to the possibility of errors, omissions, change of price, rental or other conditions, prior sale, lease or financing, or withdrawal without notice. We include projections, opinions, assumptions or estimates for example only, and they may not represent current or future performance of the property. You and your tax and legal advisors should conduct your own investigation of the property and transaction.



THE
STUBBLEBINE
COMPANY

CORFAC INTERNATIONAL