



15 CRAIG RD

ACTON, MA

FOR SALE | 16,186 SF LIGHT MANUFACTURING / R&D BUILDING

- 1.21 AC
- 0.5 Miles to Route 2
- 6.9 Miles to Route 495



THE
STUBBLEBINE
COMPANY

CORFAC INTERNATIONAL

PROPERTY SUMMARY



PROPERTY DESCRIPTION

16,186 SF Light Manufacturing / R&D Building on 1.21 AC for Sale

PROPERTY HIGHLIGHTS

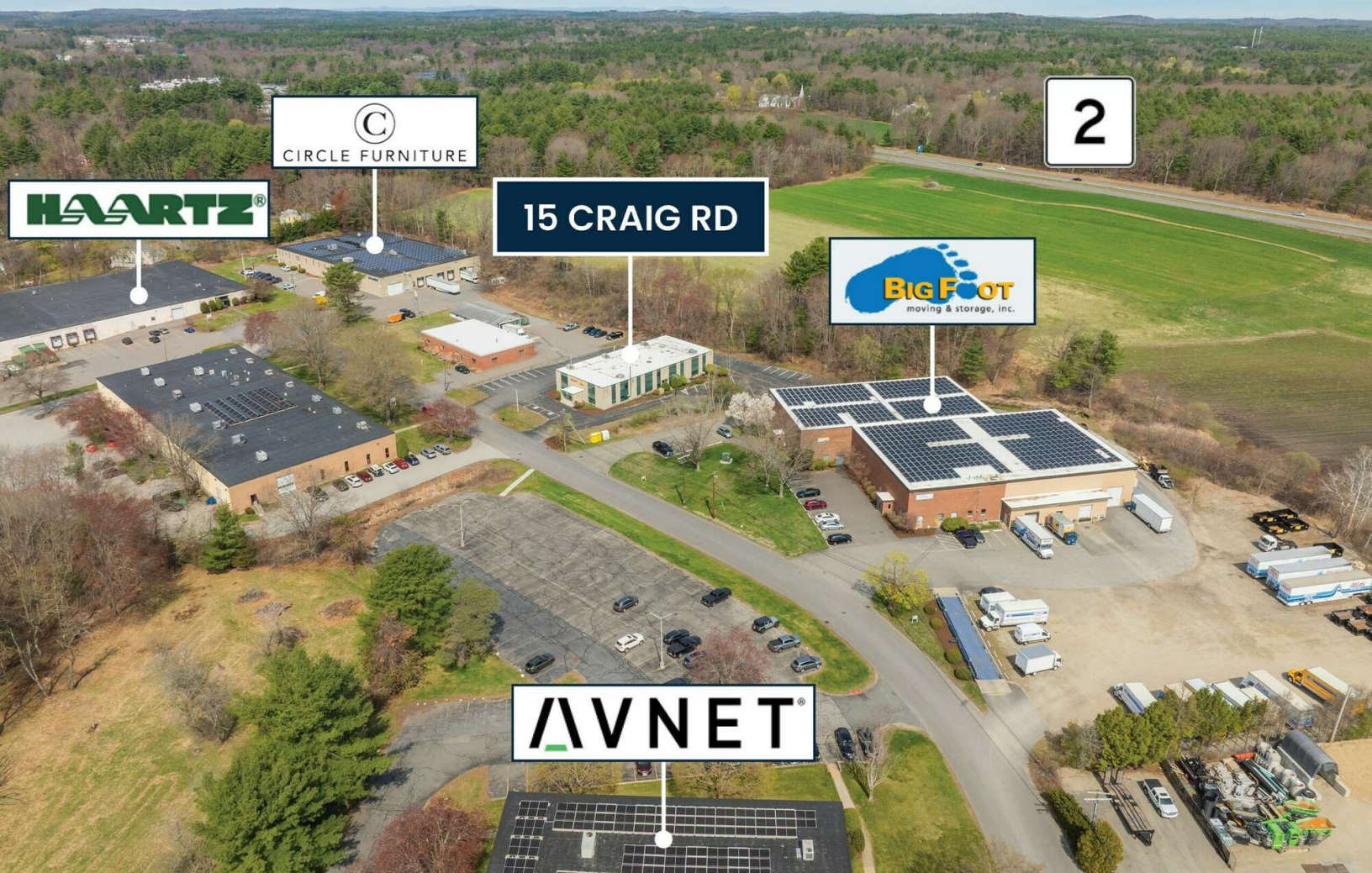
- 0.6 Miles to Route 111
- 0.5 Miles to Route 2
- 6.9 Miles to Route 495

PROPERTY SPECIFICATIONS

Building Size:	16,186 SF
Lot Size:	1.21 AC
Stories:	2
Class:	B
Clear Height:	8'8"
Loading:	1 Exterior Dock
Construction:	Masonry
Parking:	71

DEMOGRAPHICS	3 MILES	5 MILES	10 MILES
Total Households	13,053	24,860	118,393
Total Population	34,690	66,479	318,335
Average HH Income	\$218,494	\$229,779	\$208,864

Roof:	Rubber membrane roof replaced on 7/17/2015
Septic:	2017, 5,000GAL Micro Fast 1.5 pre-treatment tank 2,000GAL monolithic pump chamber with 3 pumps, floats, and a control panel
Power:	600 Amps; 480V; 3 phase Main disconnect panel (MDP-1) was replaced in 2023
Property Taxes:	\$6,112.33
Sale Price:	\$2.7M

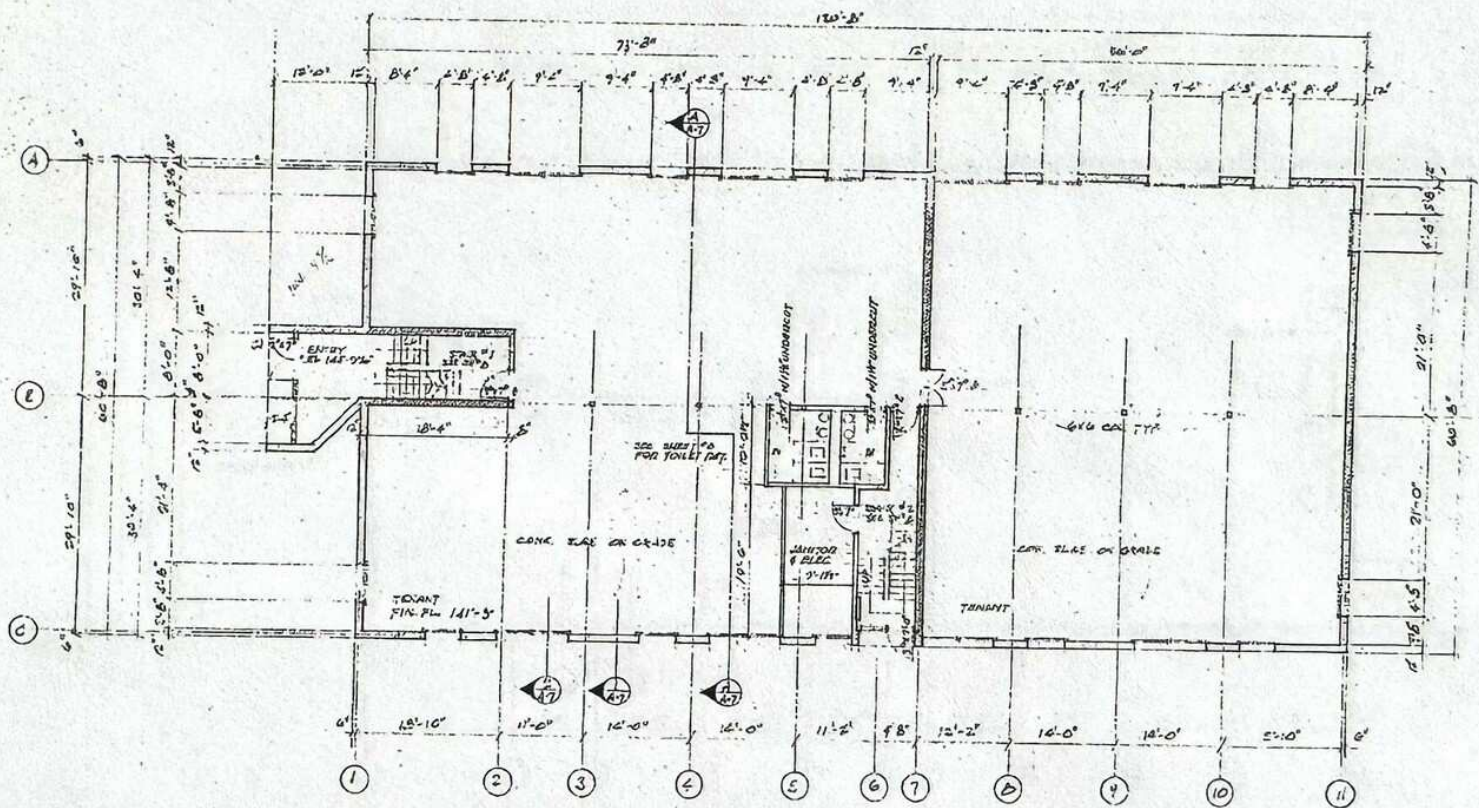




SITE PLAN



FLOOR PLAN





CAMI
CAMI Research Inc.

CARLISLE





		
6.9 MILES	0.5 MILES	0.6 MILES
8 MIN	2 MIN	2 MIN

SUDBURY

15 CRAIG RD ACTON, MA

FOR SALE | 16,186 SF LIGHT MANUFACTURING BUILDING

CHLOE STUBBLEBINE

781.879.2543

chloe@stubblebinecompany.com

MICAH STUBBLEBINE

978.265.8101

micah@stubblebinecompany.com

JAMES STUBBLEBINE

617.592.3388

james@stubblebinecompany.com

DAVID STUBBLEBINE

617.592.3391

david@stubblebinecompany.com

We obtained the information above from sources we believe to be reliable. However, we have not verified its accuracy and make no guarantee, warranty or representation about it. It is submitted subject to the possibility of errors, omissions, change of price, rental or other conditions, prior sale, lease or financing, or withdrawal without notice. We include projections, opinions, assumptions or estimates for example only, and they may not represent current or future performance of the property. You and your tax and legal advisors should conduct your own investigation of the property and transaction.



**THE
STUBBLEBINE
COMPANY**

CORFAC INTERNATIONAL