



24 JOLMA RD

WORCESTER, MA

FOR SALE | 45,300 SF INDUSTRIAL BUILDING ON 2.87 AC

- Strategically located in Worcester just off the Mass Turnpike and Route 146
- Heavy power, multiple loading docks, and ceiling heights ranging from 14'-16' clear



THE
STUBBLEBINE
COMPANY

CORFAC INTERNATIONAL

PROPERTY SUMMARY



PROPERTY DESCRIPTION

45,300 SF Industrial Building on 2.87 AC

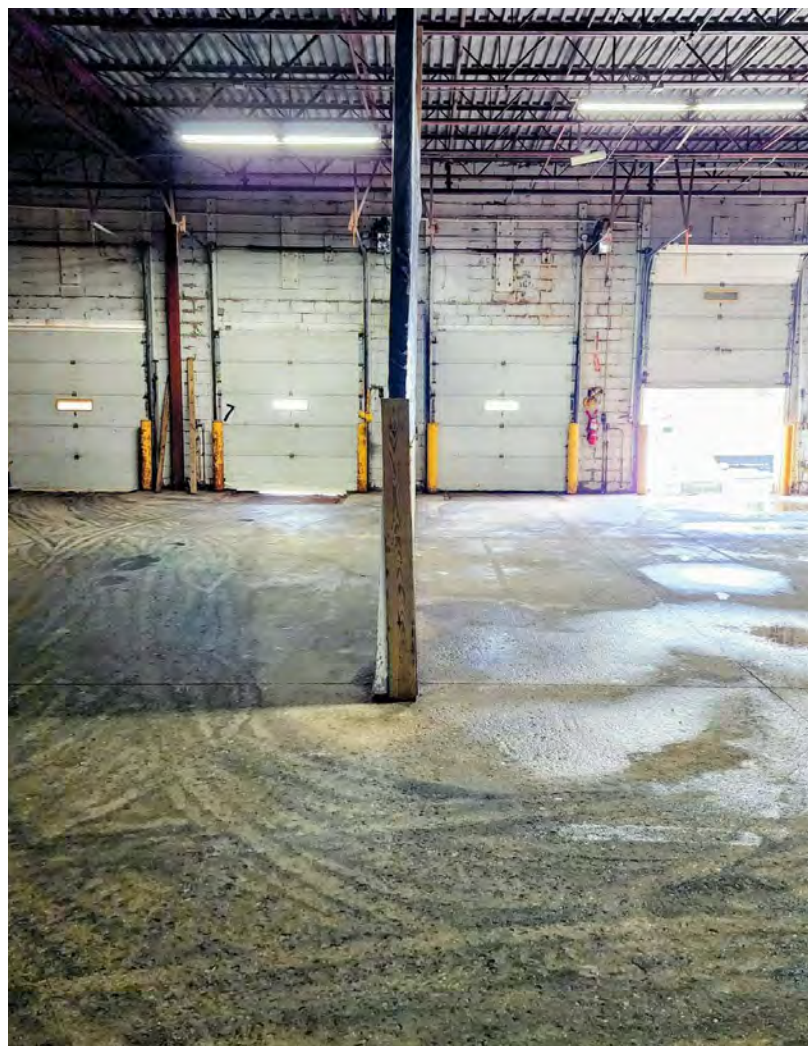
LOCATION HIGHLIGHTS

Strategically located in Worcester just off the Mass Turnpike and Route 146

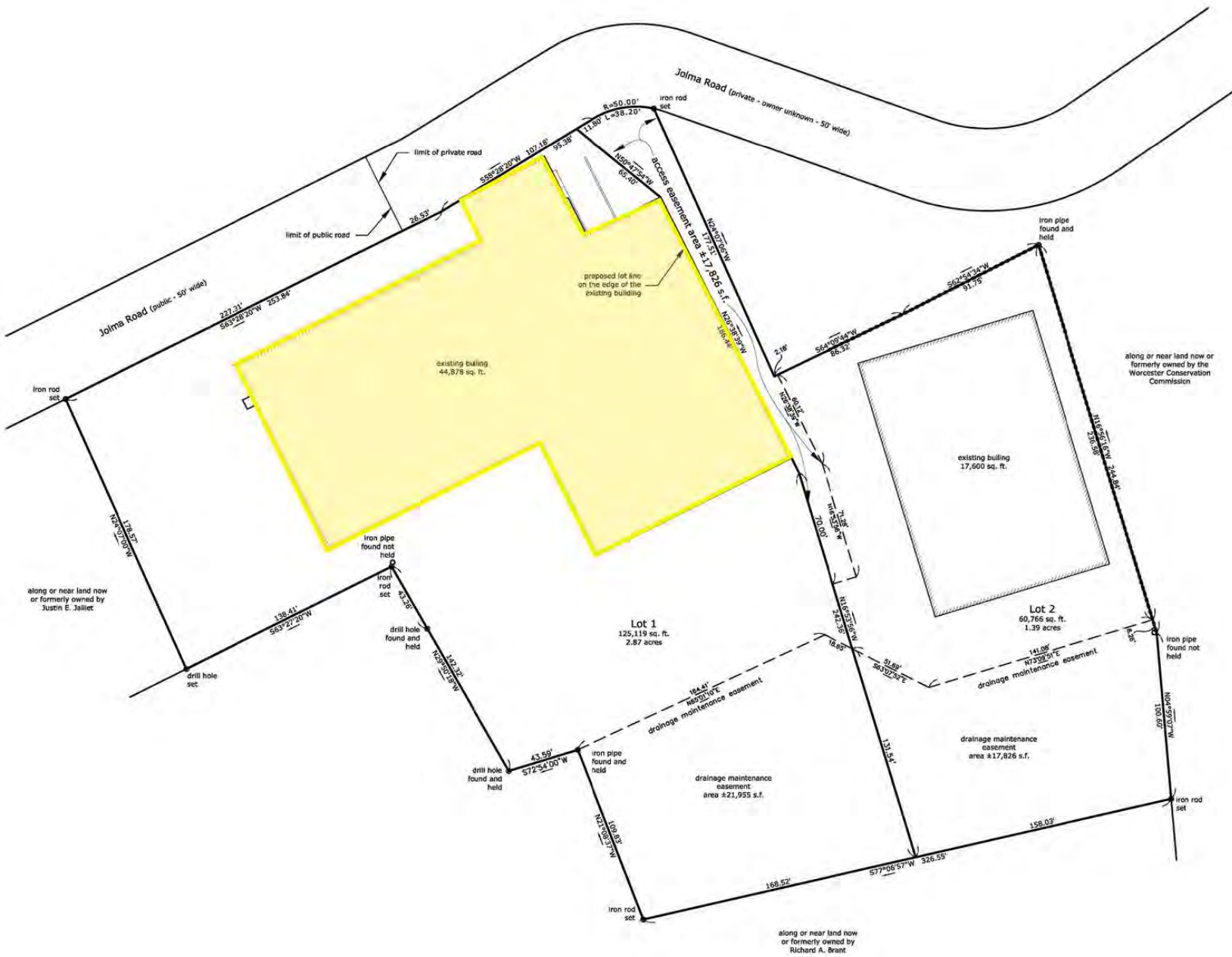
- 1.1 Miles to Route 20
- 2.4 Miles to I-90
- 3.6 Miles to Route 146

PROPERTY SPECIFICATIONS

Building Size:	45,300 SF
Manufacturing/Office:	29,000 SF
Warehouse:	16,000 SF
Lot Size:	2.87 AC
Clear Height:	14' - 16'
Loading:	Six (6) tailboard with levelers; two (2) drive-in doors
Heat:	Gas
Power:	3000 amps 480v/277w 3 phase, 4 wire
Construction:	Block
Roof:	Rubber membrane
Air Conditioning:	Office/Manufacturing
Zoning:	BG-2
Sale Price:	\$3,975,000



SITE PLAN





24 JOLMA RD

WORCESTER, MA

FOR SALE | 45,300 SF INDUSTRIAL BUILDING ON 2.87 AC

CHLOE STUBBLEBINE

781.879.2543

chloe@stubblebinecompany.com

ALAN RINGUETTE

978.265.8112

alan@stubblebinecompany.com

JAMES STUBBLEBINE

617.592.3388

james@stubblebinecompany.com

DAVID STUBBLEBINE

617.592.3391

david@stubblebinecompany.com

We obtained the information above from sources we believe to be reliable. However, we have not verified its accuracy and make no guarantee, warranty or representation about it. It is submitted subject to the possibility of errors, omissions, change of price, rental or other conditions, prior sale, lease or financing, or withdrawal without notice. We include projections, opinions, assumptions or estimates for example only, and they may not represent current or future performance of the property. You and your tax and legal advisors should conduct your own investigation of the property and transaction.



THE
STUBBLEBINE
COMPANY

CORFAC INTERNATIONAL