



7 CROW'S NEST CIRCLE

MERRIMACK, NH

360,000 SF | 36' CLEAR | NEW CONSTRUCTION

RYAN PETRACO
AARON SMITH
JAMES STUBBLEBINE
DAVID STUBBLEBINE

631.707.2577
978.654.0432
617.592.3388
617.592.3391

rpetraco@stubblebinecompany.com
asmith@stubblebinecompany.com
james@stubblebinecompany.com
david@stubblebinecompany.com



THE
STUBBLEBINE
COMPANY

CORFAC INTERNATIONAL

PROPERTY SUMMARY

PROPERTY DESCRIPTION

360,000 SF Industrial Building

PROPERTY HIGHLIGHTS

- Class A Industrial Building
- Located 3 minutes off of Route 3
- Accessible by Exit 7E and 10 off of Route 3
- Under Construction

CONSTRUCTION TIMELINE

- Phase 1 -
- Under Construction
- 60,000 SF Leased
- Phase 2 - 260,000 SF
- Groundbreaking: Fall 2024
- Site Work: Fall 2024
- Building Structure/Envelope: Spring 2025
- Base Building Delivery: Fall 2025
- TI Delivery: Spring 2026

PROPERTY SPECIFICATIONS

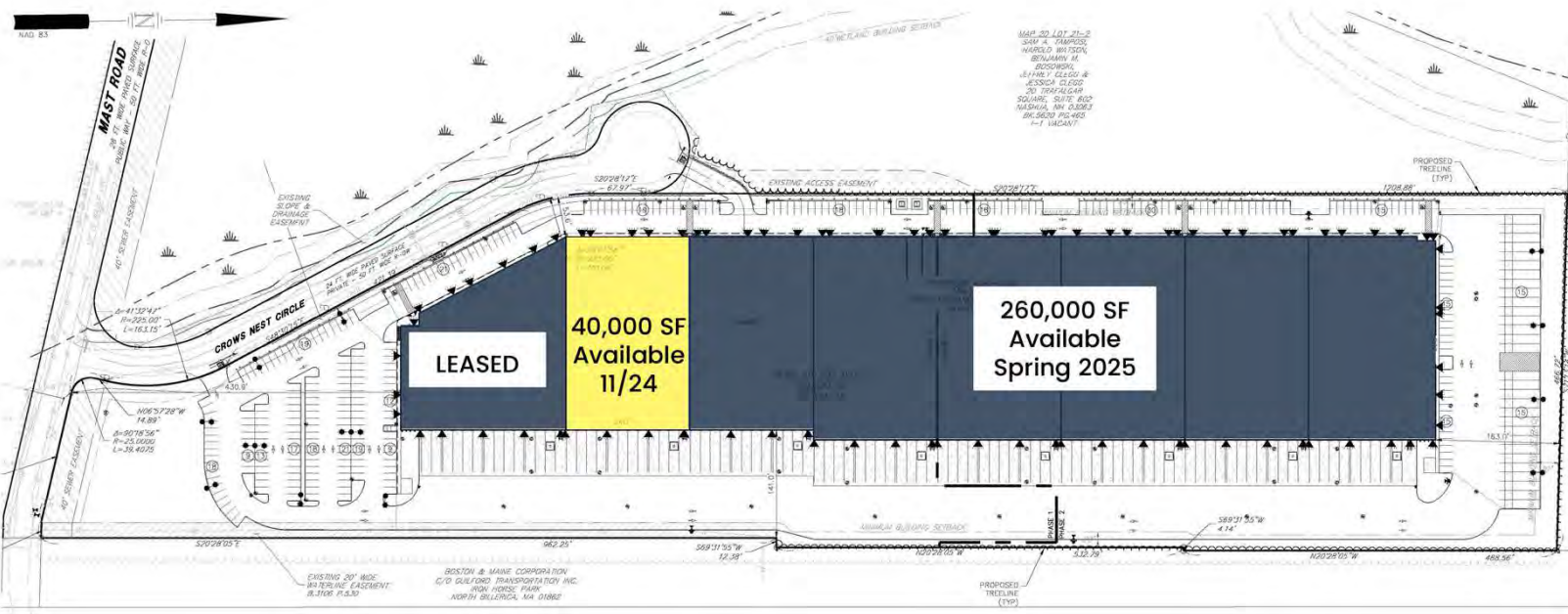
TOTAL SIZE:	359,309 SF
Available SF Spring 2026:	260,000 +/- SF
LOT SIZE:	18.34 Acres
CLEAR HEIGHT:	36' Clear height
UTILITIES:	Town Water/ Natural Gas/ Sewer (Private)
LOADING DOCKS:	96 (9'x10')
DRIVE-IN DOORS:	8 (12' x 14')
COLUMN SPACING:	54'W x 48'D, 60' Deep Speedbay
PARKING:	304 Spaces
TRAILER PARKING:	30 Spaces
SPRINKLER:	ESFR
EXTERIOR WALLS:	Precast insulated concrete panels
BUILDING DEPTH:	265'
BUILDING LENGTH:	1,350'
TRUCK COURT DEPTH:	130'
WAREHOUSE FLOOR:	8" Sealed concrete slab, 3,500 PSI
LIGHTING:	LED
COMMUNICATION:	1 GB Fiber Service
RENTAL RATE:	MARKET

ADDITIONAL RENDERINGS





SITE PLAN



AERIAL

VIRTEX

MERRIMACK
PREMIUM
OUTLETS®
Shop Brilliantly.

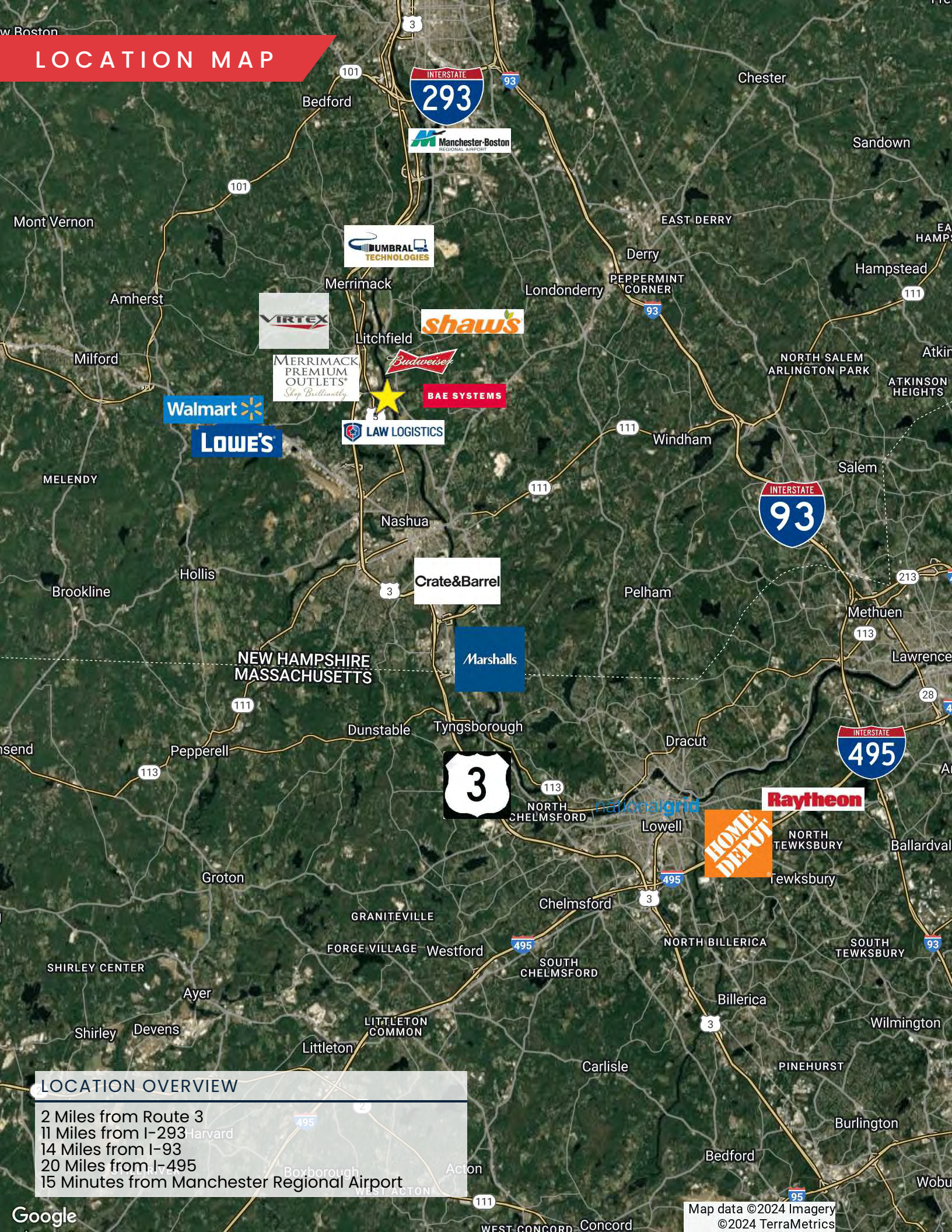
Elbit Systems™

Budweiser

BAE SYSTEMS

CSX

LOCATION MAP



LOCATION OVERVIEW

2 Miles from Route 3
11 Miles from I-293
14 Miles from I-93
20 Miles from I-495
15 Minutes from Manchester Regional Airport

LOCAL MAP

EXIT 10



BAE SYSTEMS



SITE



Merrimack River



Everett Turnpike

101A

101A

Everett Turnpike

EXIT 7E



St. Concord St

7 CROW'S NEST CIRCLE

MERRIMACK, NH

300,000 SF AVAILABLE | **FOR LEASE**

RYAN PETRACO

631.707.2577

rpetraco@stubblebinecompany.com

AARON SMITH

978.654.0432

asmith@stubblebinecompany.com

JAMES STUBBLEBINE

617.592.3388

james@stubblebinecompany.com

DAVID STUBBLEBINE

617.592.3391

david@stubblebinecompany.com

We obtained the information above from sources we believe to be reliable. However, we have not verified its accuracy and make no guarantee, warranty or representation about it. It is submitted subject to the possibility of errors, omissions, change of price, rental or other conditions, prior sale, lease or financing, or withdrawal without notice. We include projections, opinions, assumptions or estimates for example only, and they may not represent current or future performance of the property. You and your tax and legal advisors should conduct your own investigation of the property and transaction.



THE
STUBBLEBINE
COMPANY

CORFAC INTERNATIONAL