



# 22 TUCKER DR

LEOMINSTER, MA

FOR LEASE | 33,000 SF DISTRIBUTION BUILDING ON 2.92 ACRES

- Class A 16' - 22'
- Less than 1 mile to I-190
- Well suited for manufacturing & distribution



THE  
STUBBLEBINE  
COMPANY

CORFAC INTERNATIONAL



PROPERTY SUMMARY



PROPERTY DESCRIPTION

22 Tucker Drive in Leominster, MA, is a 33,000 SF industrial building on 2.92 acres available for lease. This facility features a clear height of 16'4" to 22', six loading docks with 10' dock height and levelers, and one drive-in door, making it ideal for a variety of industrial manufacturing and distribution uses. Its strategic location and spacious lot size offer ample space and flexibility for businesses looking to expand or establish their operations in the area.

PROPERTY SPECIFICATIONS

Clear Height:	16'4" - 22'
Columns Spacing:	40' x 30'
Loading Docks:	Six (6)
Dock Height:	10' with Levelers
Drive-in Door:	One (1)
Office:	Recep/5 Office/Conf/Caf

OFFERING SUMMARY

Building Size:	33,000 SF
Warehouse:	31,000 SF
Office:	2,000 SF
Lot Size:	2.92 Acres

DEMOGRAPHICS	3 MILES	5 MILES	10 MILES
Total Households	13,274	24,008	68,675
Total Population	31,036	58,329	169,154
Average HH Income	\$80,650	\$88,021	\$95,573



# WAREHOUSE





## ADDITIONAL PHOTOS



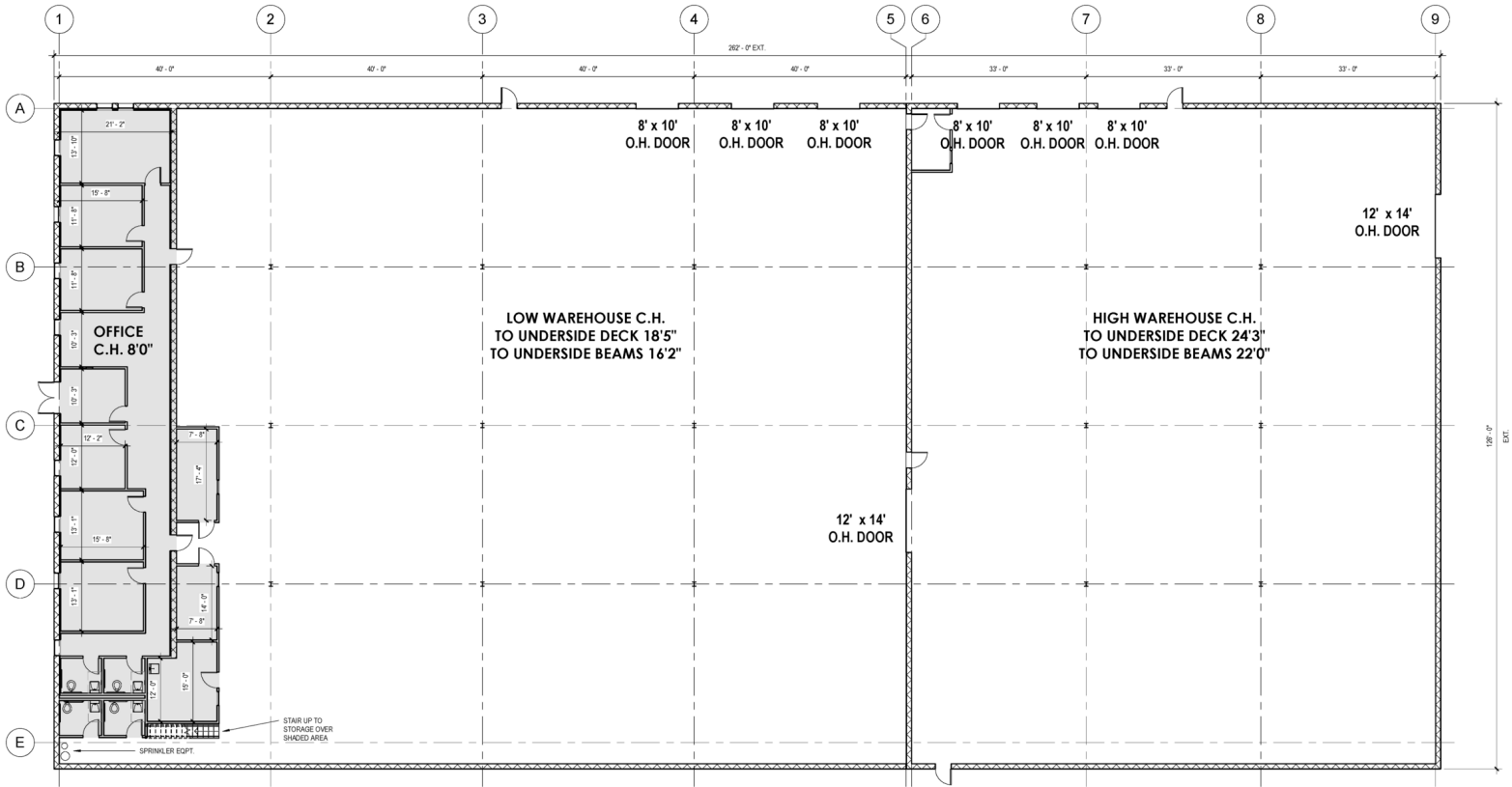


LOADING





## FLOOR PLAN



① 01 LEVEL 1 EXISTING  
3/32" = 1'-0"

OFFICE 2,284 SF

**WAREHOUSE 30,716 SF**

FRONT LOW WAREHOUSE 18,436 SF (OF WHICH 730 SF ARE WAREHOUSE OFFICES/RESTROOMS)  
REAR HIGH WAREHOUSE 10,000 SF (OF WHICH 25 SF ARE SMALL WAREHOUSE OFFICES)

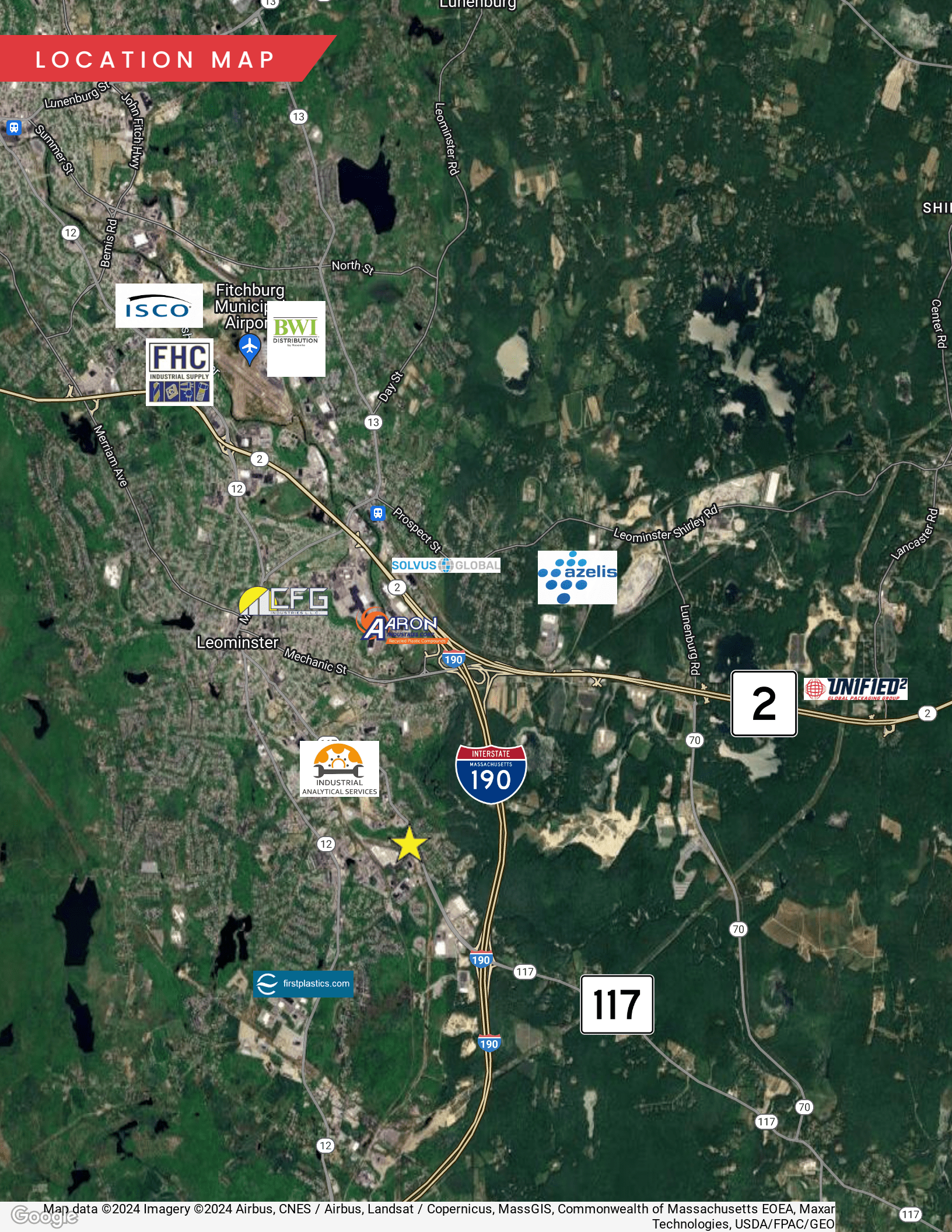
REAR HIGH WAREHOUSE 12,280 SF (OF WHICH 85 ARE SMALL WAREHOUSE OFFICE)

(THERE IS ALSO 3,014 SF OF STORAGE ABOVE THE OFFICE AREA, SHADED, AND NOT COUNTED IN BUILDING TOTAL)

**BUILDING TOTAL 33,000 S.F.**



# LOCATION MAP





# 22 TUCKER DR

## LEOMINSTER, MA

FOR LEASE | 33,000 SF DISTRIBUTION BUILDING ON 2.92 ACRES

JUSTIN HOPKINS

857.362.0148

[Justin@stubblebinecompany.com](mailto:Justin@stubblebinecompany.com)

JAMES STUBBLEBINE

857.362.0102

[james@stubblebinecompany.com](mailto:james@stubblebinecompany.com)

DAVID STUBBLEBINE

857.362.0101

[david@stubblebinecompany.com](mailto:david@stubblebinecompany.com)

We obtained the information above from sources we believe to be reliable. However, we have not verified its accuracy and make no guarantee, warranty or representation about it. It is submitted subject to the possibility of errors, omissions, change of price, rental or other conditions, prior sale, lease or financing, or withdrawal without notice. We include projections, opinions, assumptions or estimates for example only, and they may not represent current or future performance of the property. You and your tax and legal advisors should conduct your own investigation of the property and transaction.



THE  
STUBBLEBINE  
COMPANY

CORFAC INTERNATIONAL