



# 1222 NH-3A

**BOW, NH**

---

**FOR SALE | 32 ACRES INDUSTRIAL/COMMERCIAL LAND**

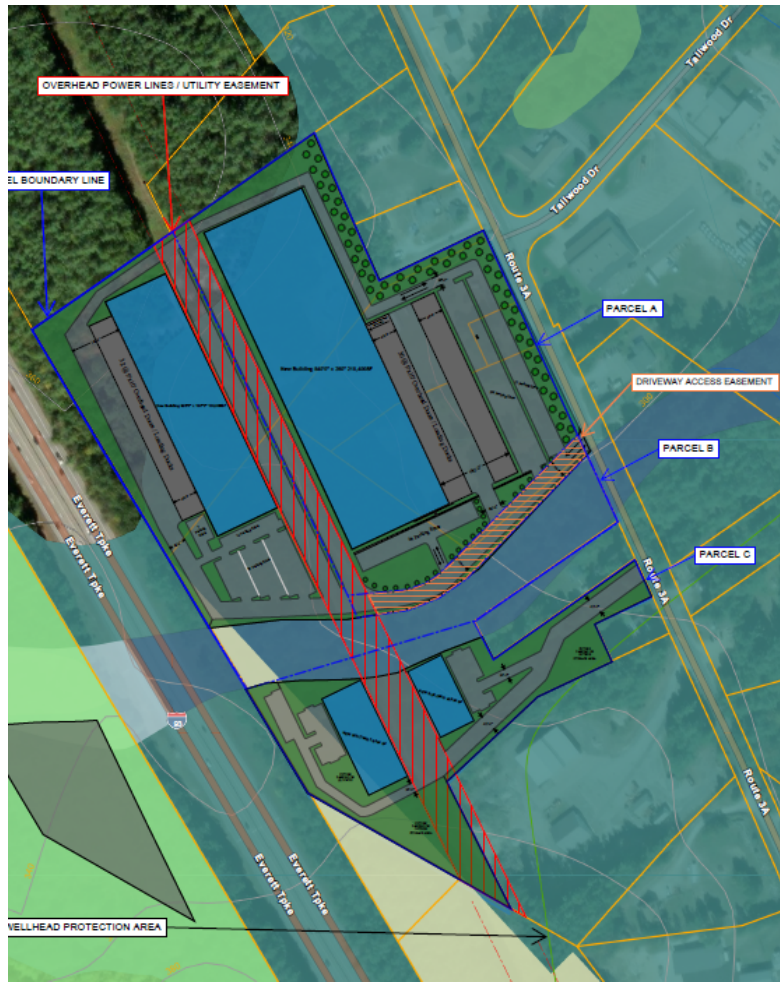
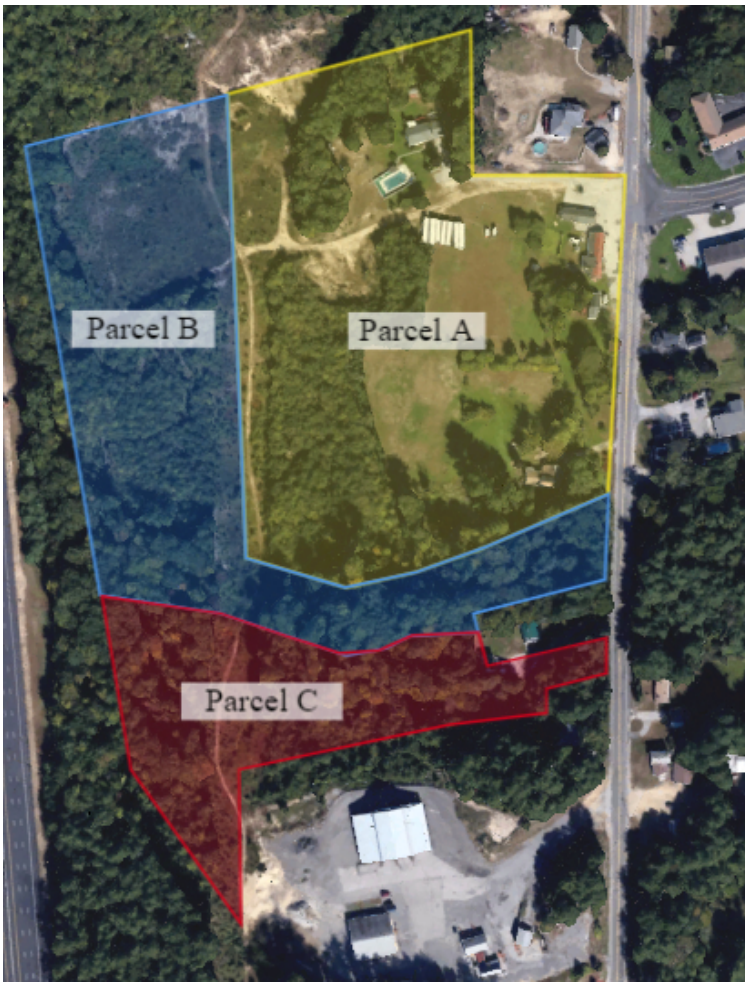
- Frontage along I-93 and Route 3A
- Proposed 360,000 SF +/-
- 5 Miles to Concord



**THE  
STUBBLEBINE  
COMPANY**

CORFAC INTERNATIONAL





**PROPERTY DESCRIPTION**

32 Acres Industrial/Commercial Land for Sale on 3 Parcels of Land

**ZONING USES**

- Warehouse
- Manufacturing
- Auto Auction
- Equipment Rental and Sales
- Distribution
- RV Dealership

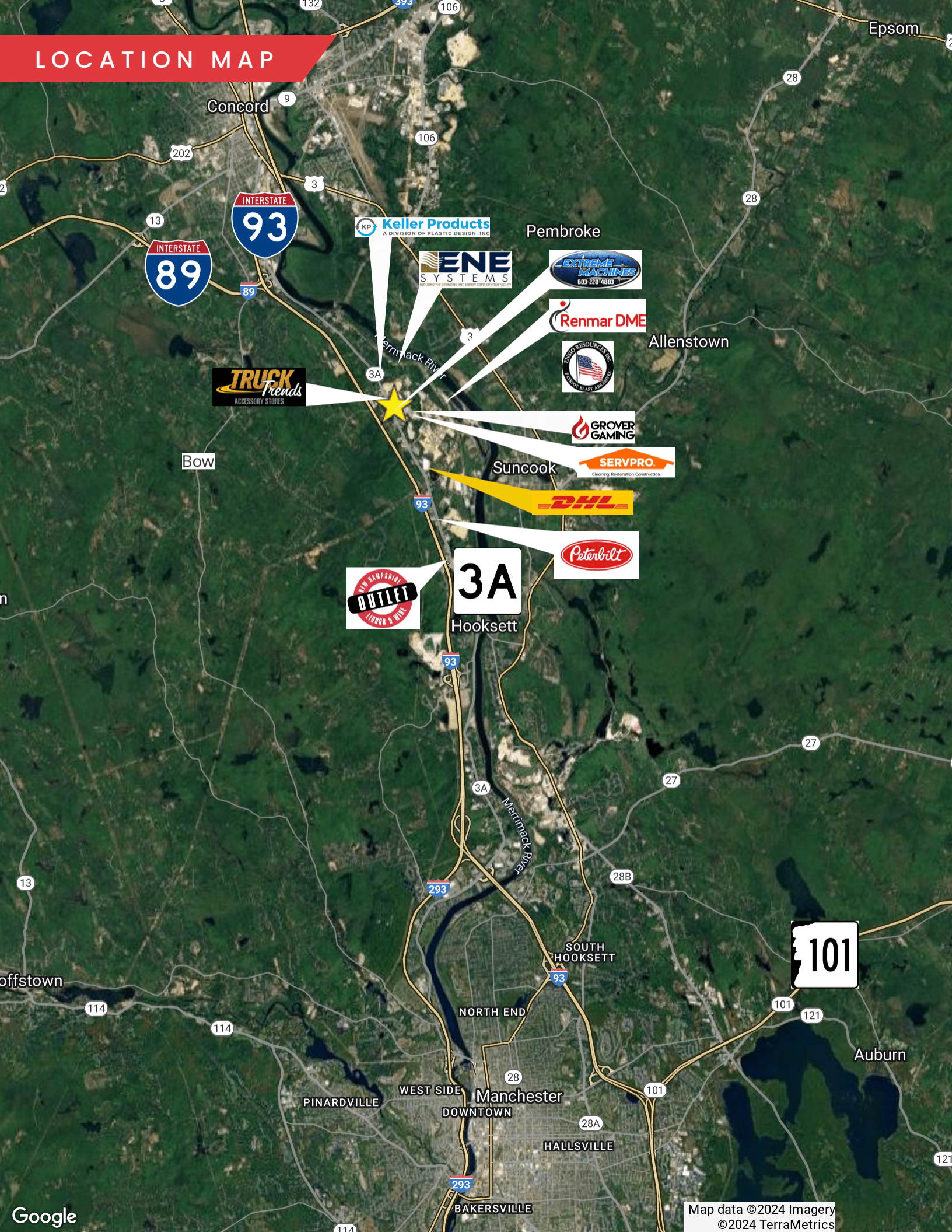
**OFFERING SUMMARY**

Lot Size:	32 Acres
Zoning:	Industrial 2 (I-2)
Sale Price:	MARKET

DEMOGRAPHICS	3 MILES	5 MILES	10 MILES
Total Households	5,590	13,928	56,975
Total Population	14,390	34,634	141,273



# LOCATION MAP





# 1222 NH-3A

**BOW, NH**

**FOR SALE | 32 ACRES INDUSTRIAL LAND**

**DEVON WAGNER**

978.795.7933

[devon@stubblebinecompany.com](mailto:devon@stubblebinecompany.com)

**MATTY DROUILLARD**

857.362.0144

[matty@stubblebinecompany.com](mailto:matty@stubblebinecompany.com)

**JAMES STUBBLEBINE**

857.362.0102

[james@stubblebinecompany.com](mailto:james@stubblebinecompany.com)

We obtained the information above from sources we believe to be reliable. However, we have not verified its accuracy and make no guarantee, warranty or representation about it. It is submitted subject to the possibility of errors, omissions, change of price, rental or other conditions, prior sale, lease or financing, or withdrawal without notice. We include projections, opinions, assumptions or estimates for example only, and they may not represent current or future performance of the property. You and your tax and legal advisors should conduct your own investigation of the property and transaction.



**THE  
STUBBLEBINE  
COMPANY**

CORFAC INTERNATIONAL