



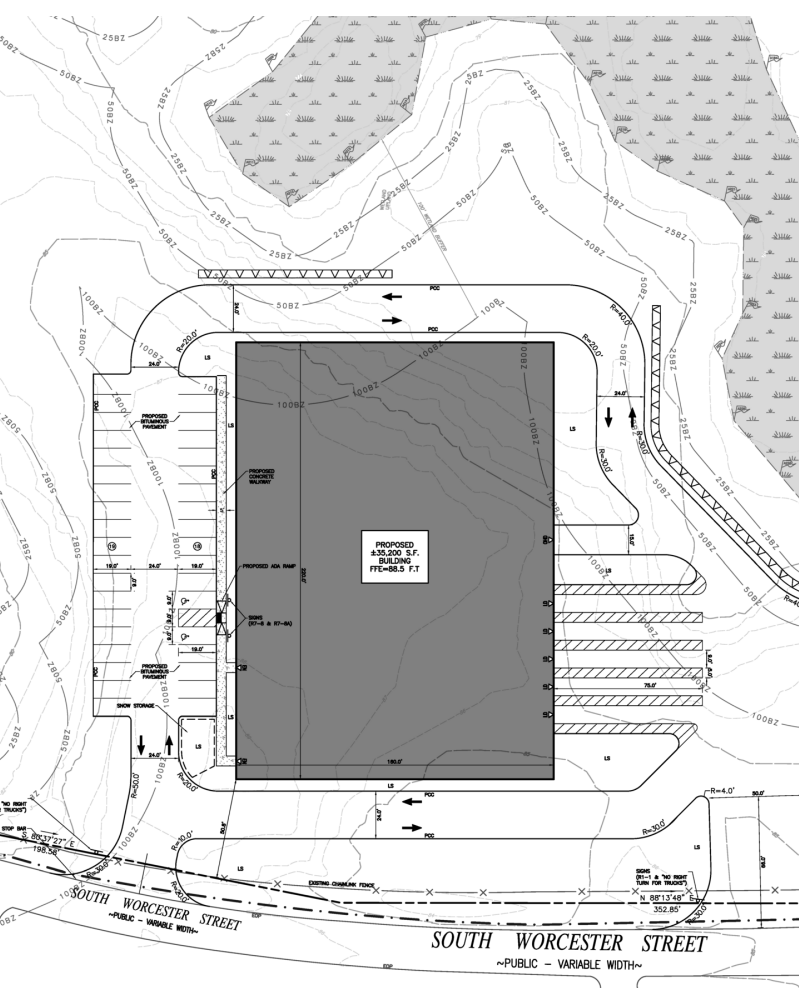
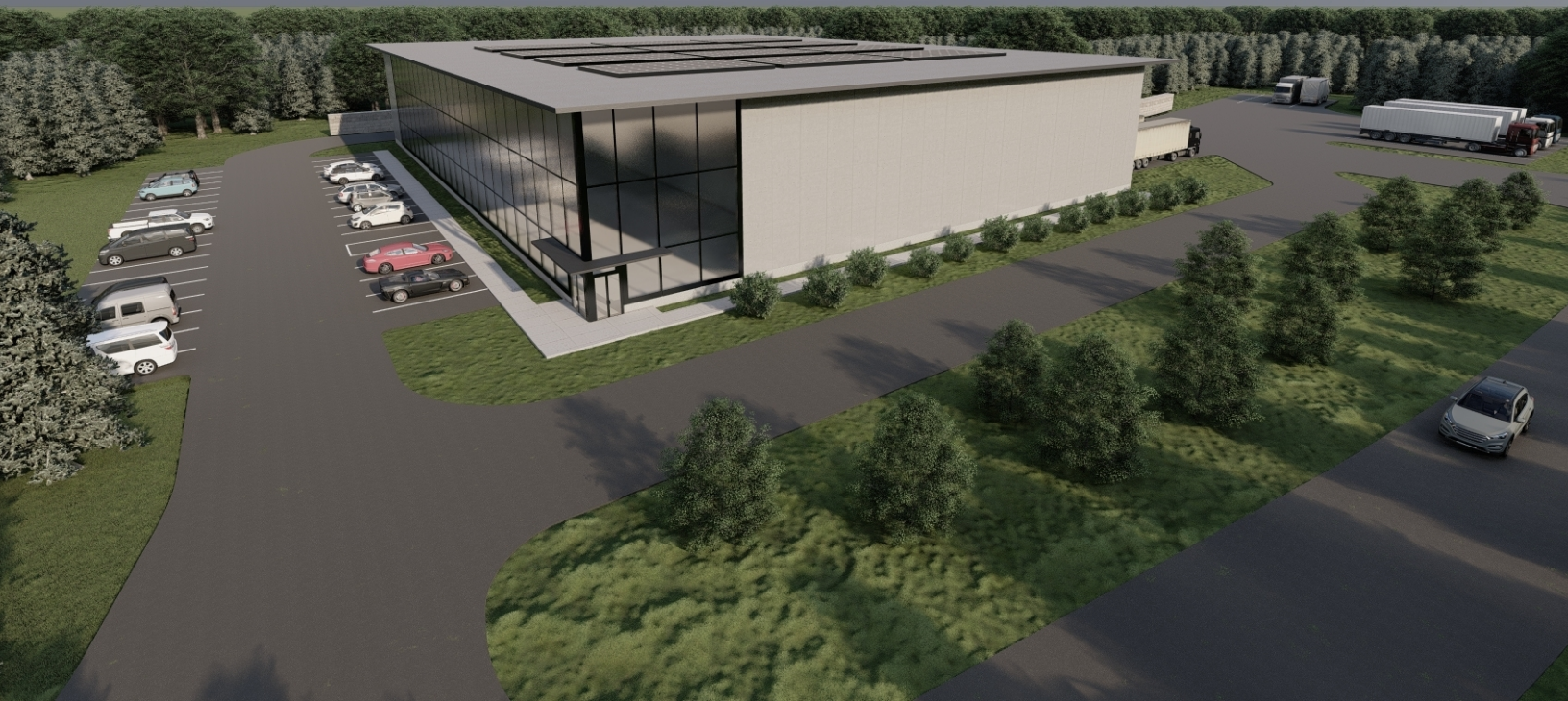
354 SOUTH WORCESTER STREET NORTON, MA

LAND FOR SALE OR BUILD-TO-SUIT LEASE | 32,200 SF INDUSTRIAL BUILDING

JAMES STUBBLEBINE	617.592.3388	james@stubblebinecompany.com
DAVID STUBBLEBINE	617.592.3391	david@stubblebinecompany.com
CHRIS MICHNIEWICZ	774.994.1698	chris@stubblebinecompany.com
DAVID BERMAN	413.636.9055	dberman@stubblebinecompany.com

 THE
STUBBLEBINE
COMPANY
CORFAC INTERNATIONAL

PROPERTY SUMMARY



PROPERTY DESCRIPTION

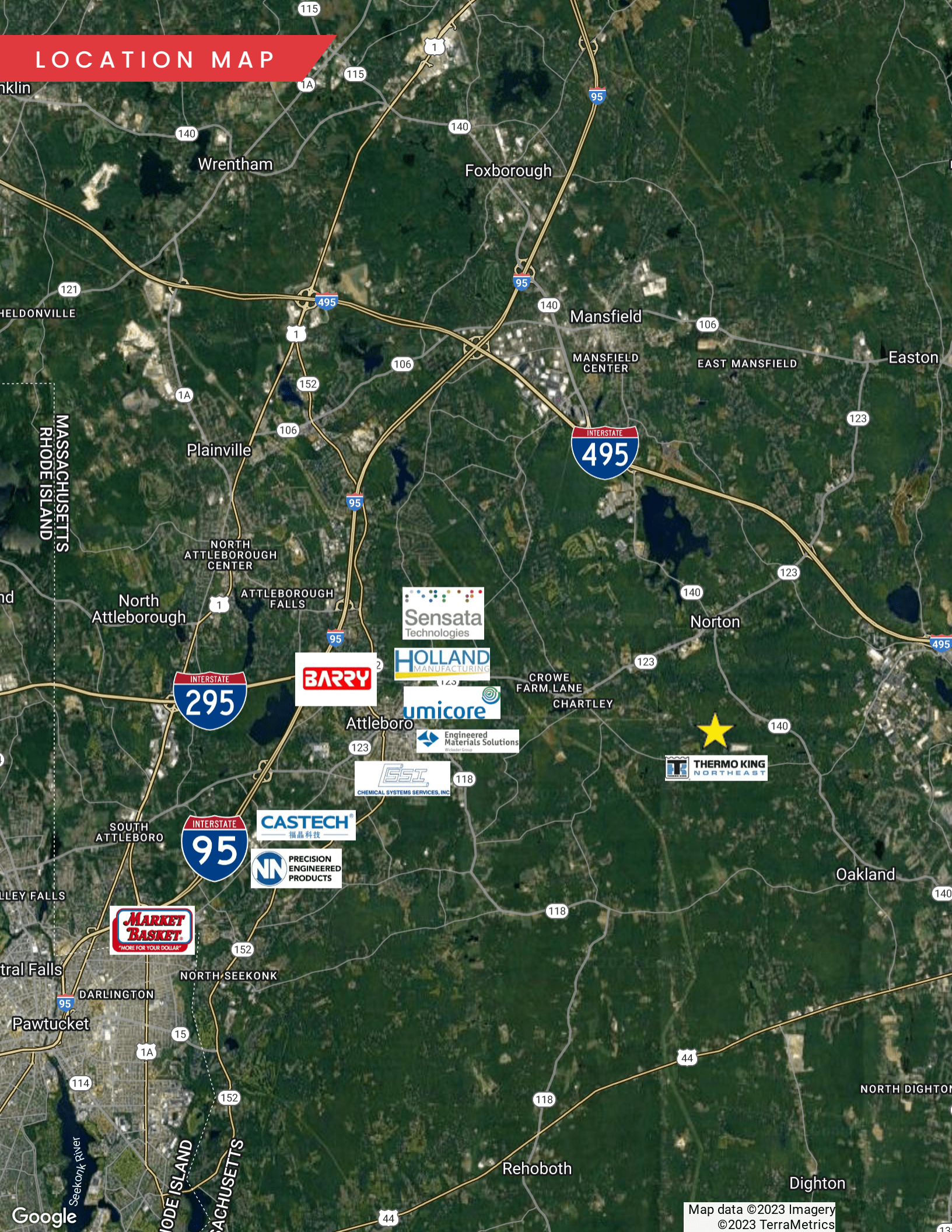
3 acres of industrial land for sale or 32,200 SF build-to-suit for lease

OFFERING SUMMARY

Sale Price:	Market
Building Size:	32,200 SF
Lot Size:	33 Acres
Usable Acres:	3~ Acres

DEMOGRAPHICS	3 MILES	5 MILES	10 MILES
Total Households	5,899	24,483	114,938
Total Population	17,193	64,022	286,732
Average HH Income	\$121,699	\$98,777	\$104,649

LOCATION MAP



Sensata
Technologies

HOLLAND
MANUFACTURING

BARRY

umicore

Engineered
Materials Solutions

EST
CHEMICAL SYSTEMS SERVICES, INC.

CASTECH
福晶科技

NN
PRECISION
ENGINEERED
PRODUCTS

MARKET
BASKET
"MORE FOR YOUR DOLLAR"

THERMO KING
NORTHEAST

354 SOUTH WORCESTER STREET

NORTON, MA

LAND FOR SALE OR BUILD-TO-SUIT LEASE | 32,200 SF INDUSTRIAL BUILDING

JAMES STUBBLEBINE

617.592.3388

james@stubblebinecompany.com

DAVID STUBBLEBINE

617.592.3391

david@stubblebinecompany.com

CHRIS MICHNIEWICZ

774.994.1698

chris@stubblebinecompany.com

DAVID BERMAN

413.636.9055

dberman@stubblebinecompany.com

We obtained the information above from sources we believe to be reliable. However, we have not verified its accuracy and make no guarantee, warranty or representation about it. It is submitted subject to the possibility of errors, omissions, change of price, rental or other conditions, prior sale, lease or financing, or withdrawal without notice. We include projections, opinions, assumptions or estimates for example only, and they may not represent current or future performance of the property. You and your tax and legal advisors should conduct your own investigation of the property and transaction.



THE
STUBBLEBINE
COMPANY

CORFAC INTERNATIONAL