



300 CANAL ST, BLDG. 7

LAWRENCE, MA

FOR SALE | 58,200~SF INDUSTRIAL BUILDING

ELLEN GARTHOFF
MICAH STUBBLEBINE

978.760.1263
978.265.8101

ellen@stubblebinecompany.com
micah@stubblebinecompany.com



THE
STUBBLEBINE
COMPANY

CORFAC INTERNATIONAL

PROPERTY SUMMARY



PROPERTY SPECIFICATIONS

Building Size:	58,200~SF comprised of: Ground Floor: 35,592~SF Second Floor: 25,608~SF
Lot Size:	0.95 AC
Zoning:	Industrial-2 (I2)
Electrical:	480v, 800 amps, 3-phase, 3-wire
Sprinklers:	100% Wet System
Age:	1964
Roof:	Rubber Membrane
Heat:	Gas (four new units in 2018) & electric
AC:	Office only
Air:	Compressed air- lines throughtout the first floor
Parking:	18 Spaces (See easement agreement)

Loading:	Two (2) Docks Two (2) On-Grade Roll-Up Doors
Clear Height:	11'9" - 20'~ Clear (Ground Floor) 9' ~ Clear (Second Floor)
Construction:	Steel Frame & Masonry
Sewer/Water:	City
R.E. Taxes:	\$0.65/SF (FY 2023)
Sale Price:	\$2,900,000

ADDITIONAL PHOTOS



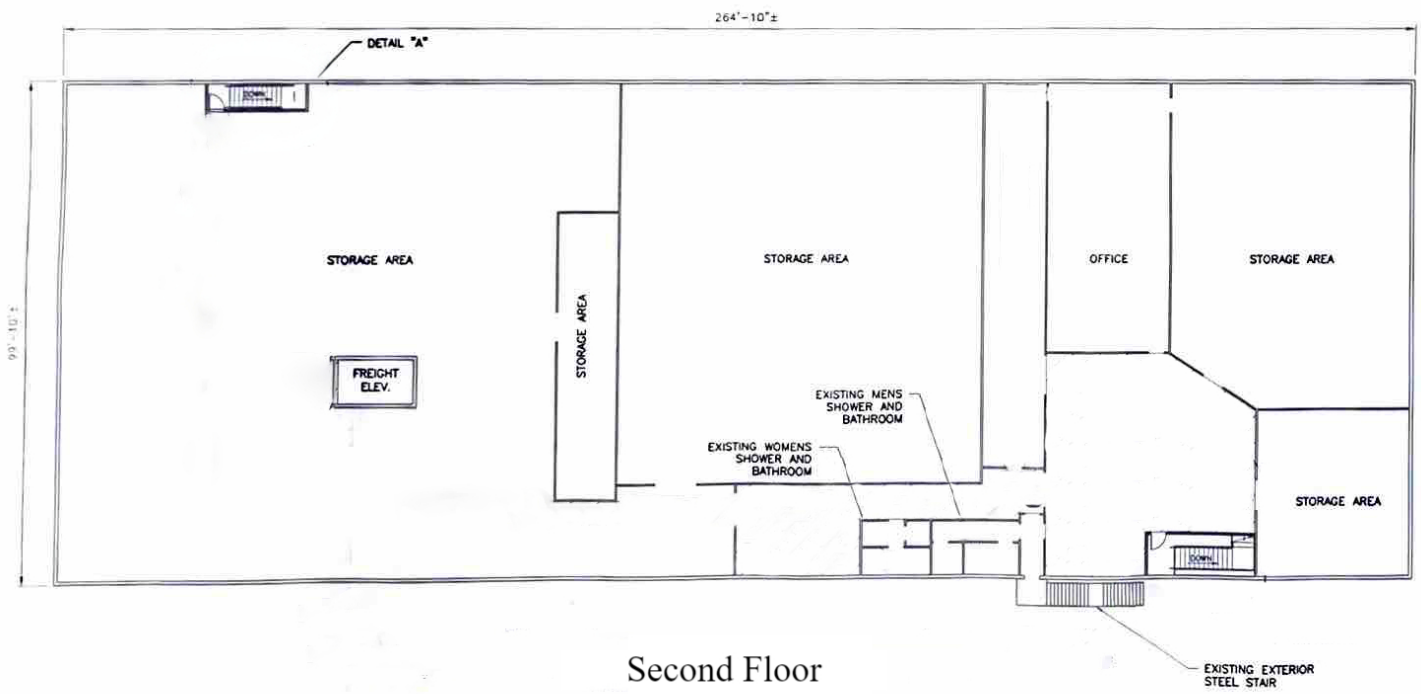
ADDITIONAL PHOTOS



FLOOR PLANS

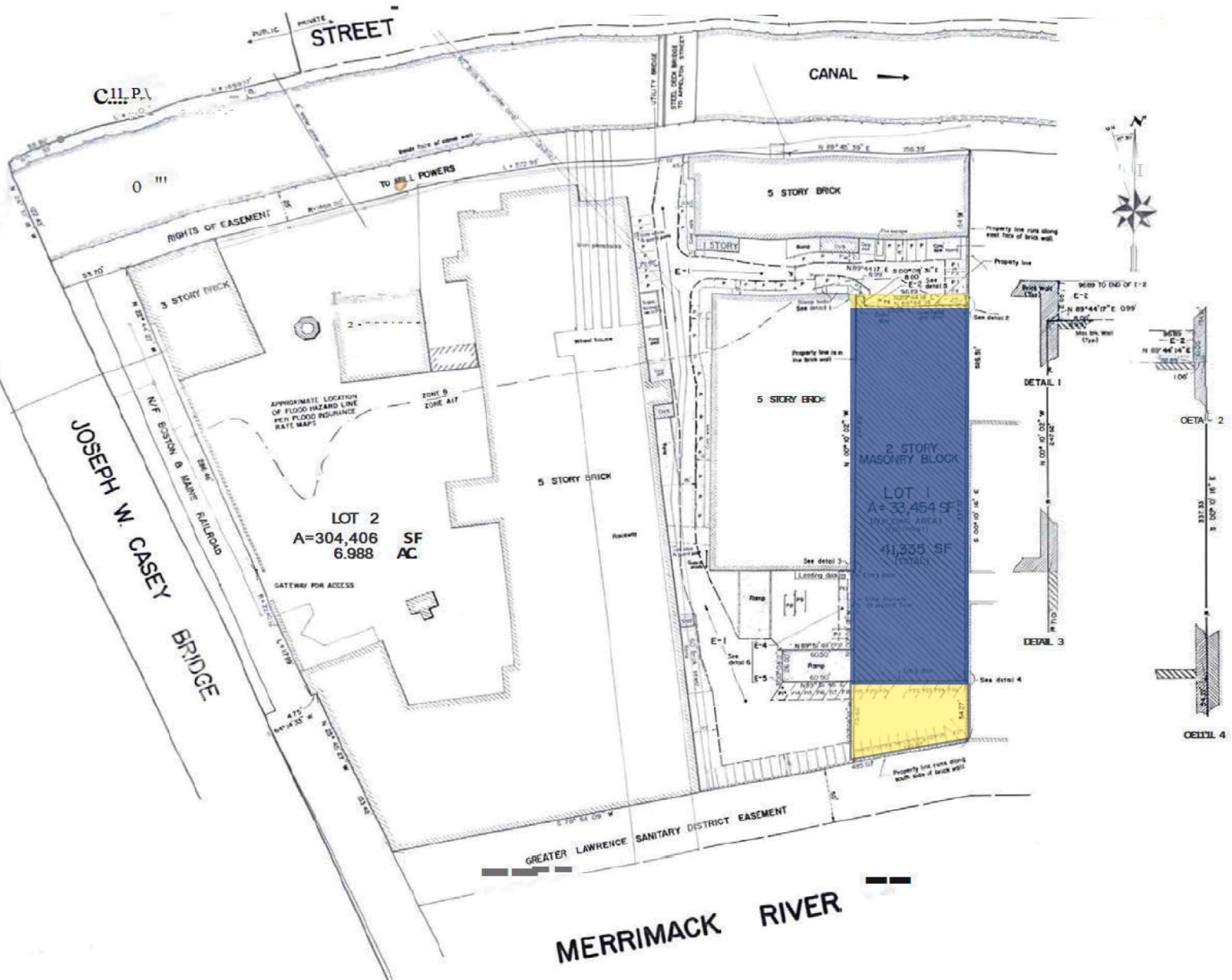


First Floor

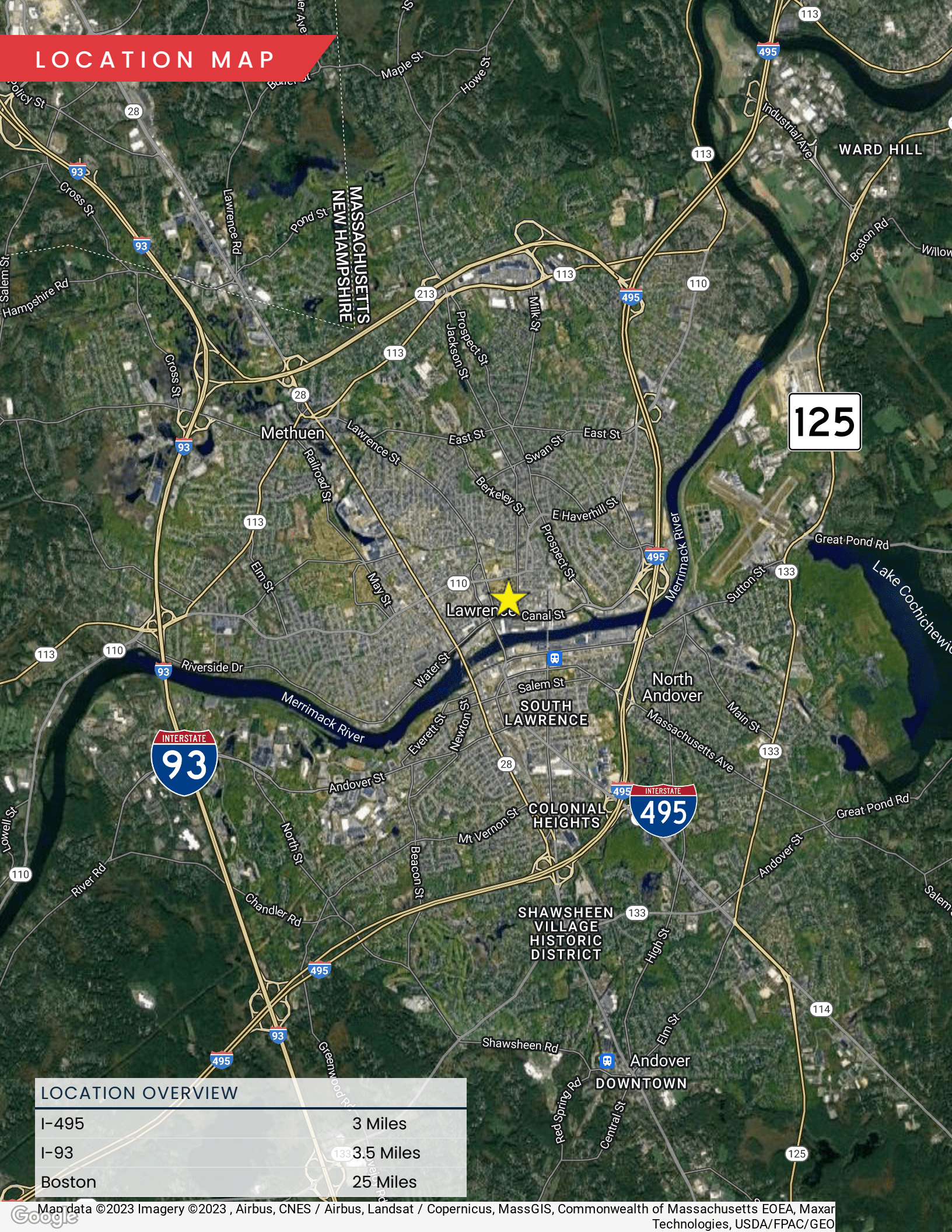


Second Floor

SITE PLAN



LOCATION MAP



MASSACHUSETTS
NEW HAMPSHIRE

125

INTERSTATE
93

INTERSTATE
495

LOCATION OVERVIEW

I-495	3 Miles
I-93	3.5 Miles
Boston	25 Miles

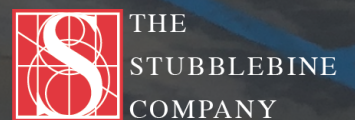
300 CANAL ST, BLDG. 7 LAWRENCE, MA

FOR SALE | 58,200~SF INDUSTRIAL WAREHOUSE

ELLEN GARTHOFF
978.760.1263
ellen@stubblebinecompany.com

MICAH STUBBLEBINE
978.265.8101
micah@stubblebinecompany.com

We obtained the information above from sources we believe to be reliable. However, we have not verified its accuracy and make no guarantee, warranty or representation about it. It is submitted subject to the possibility of errors, omissions, change of price, rental or other conditions, prior sale, lease or financing, or withdrawal without notice. We include projections, opinions, assumptions or estimates for example only, and they may not represent current or future performance of the property. You and your tax and legal advisors should conduct your own investigation of the property and transaction.



CORFAC INTERNATIONAL