



50 CRAWFORD STREET

FITCHBURG, MA

FOR LEASE | 25,570 SF INDUSTRIAL WAREHOUSE

- 12' Clear
- 2.13 Paved Acres



THE
STUBBLEBINE
COMPANY

CORFAC INTERNATIONAL

PROPERTY SUMMARY

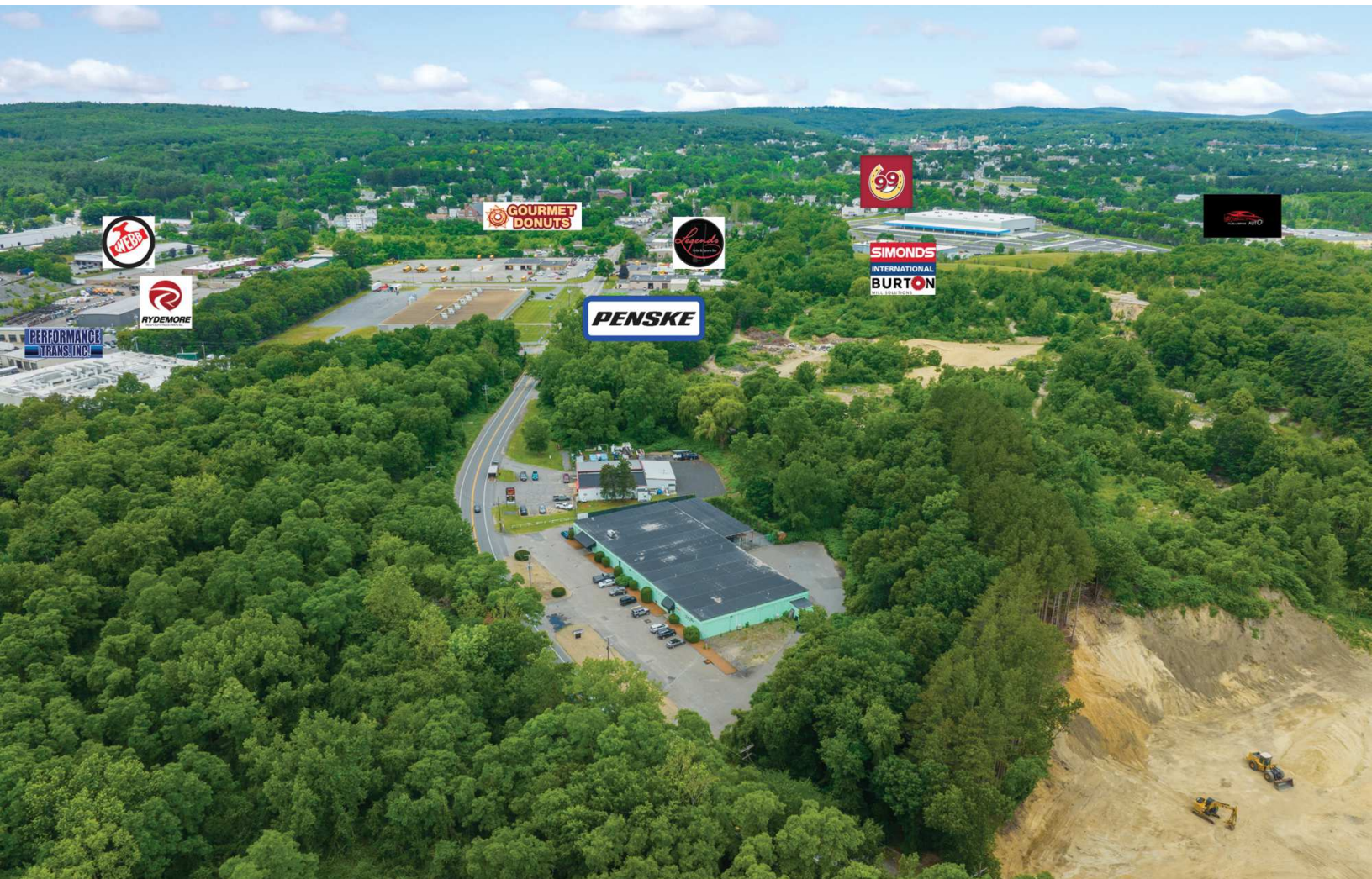


PROPERTY DESCRIPTION
25,570 SF Industrial Warehouse for Lease

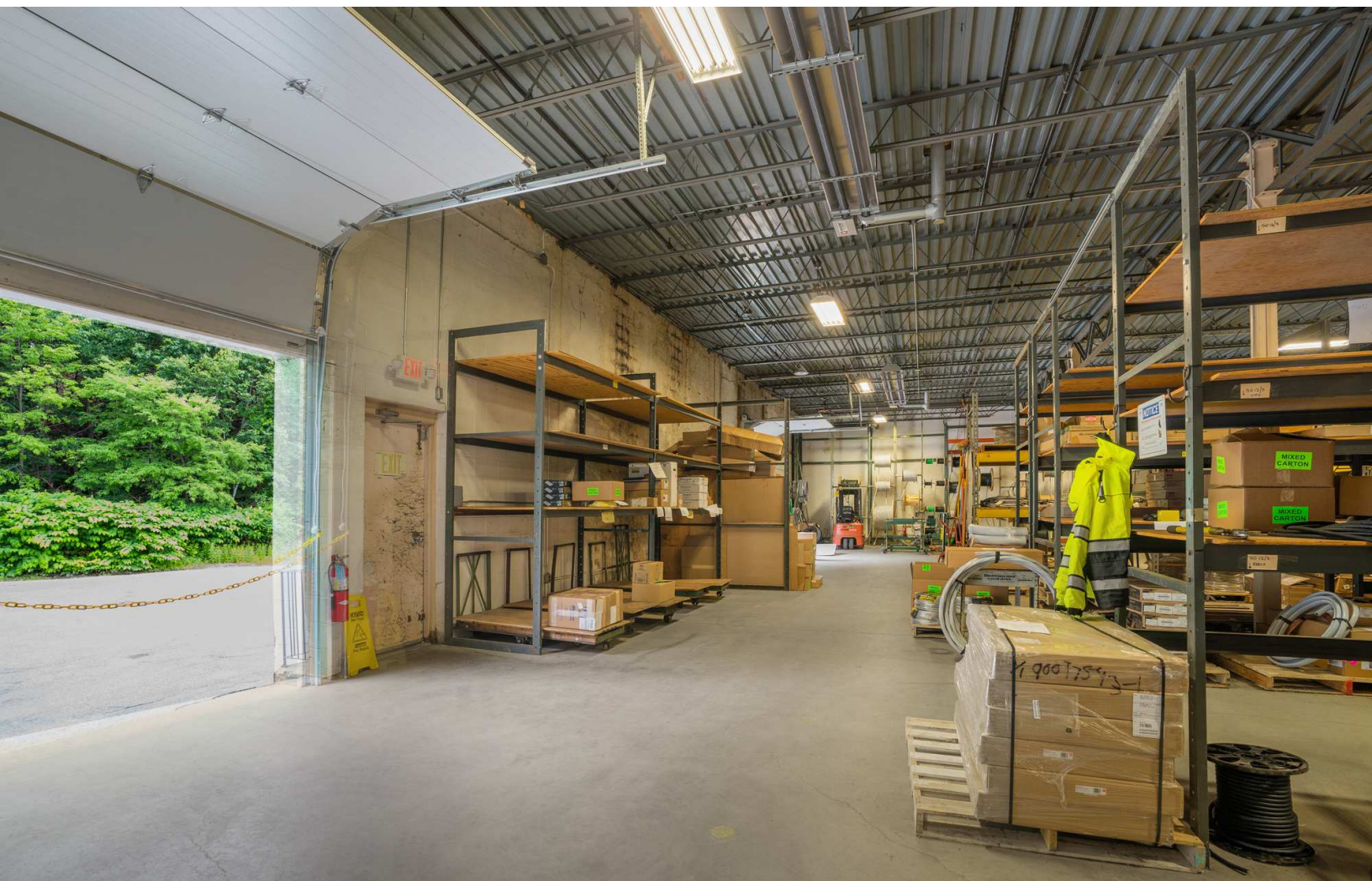
PROPERTY SPECIFICATIONS	
LOADING:	2 Tailboard Docks
CLEAR HEIGHT:	12'
ZONING:	Industrial

OFFERING SUMMARY			
Lease Rate:		Market	
Available SF:		25,570 SF	
Lot Size:		2.13 Acres	
DEMOGRAPHICS	3 MILES	5 MILES	10 MILES
Total Households	24,584	37,786	62,407
Total Population	58,112	90,044	154,894
Average HH Income	\$69,653	\$76,324	\$91,615

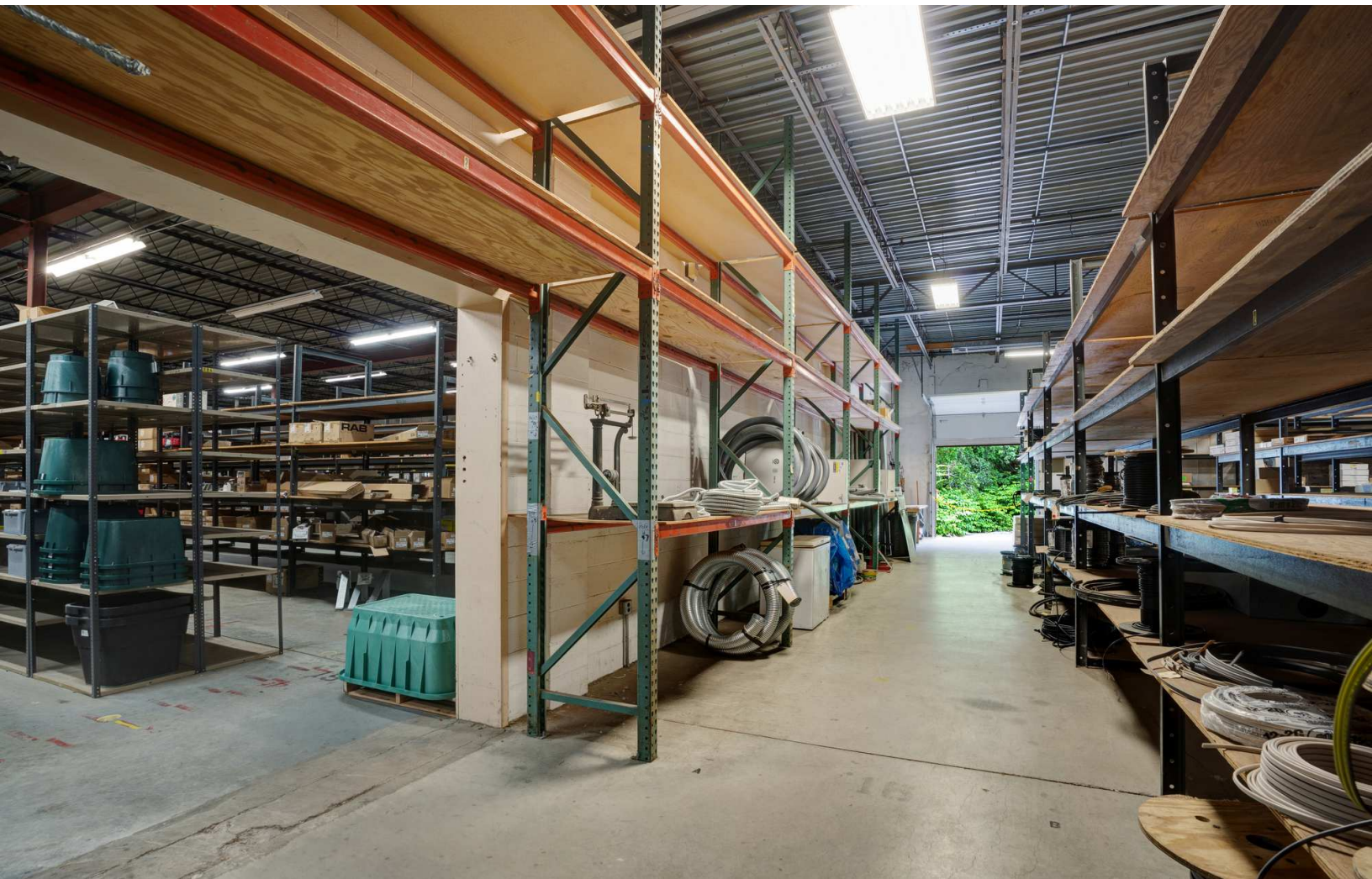
ADDITIONAL PHOTOS



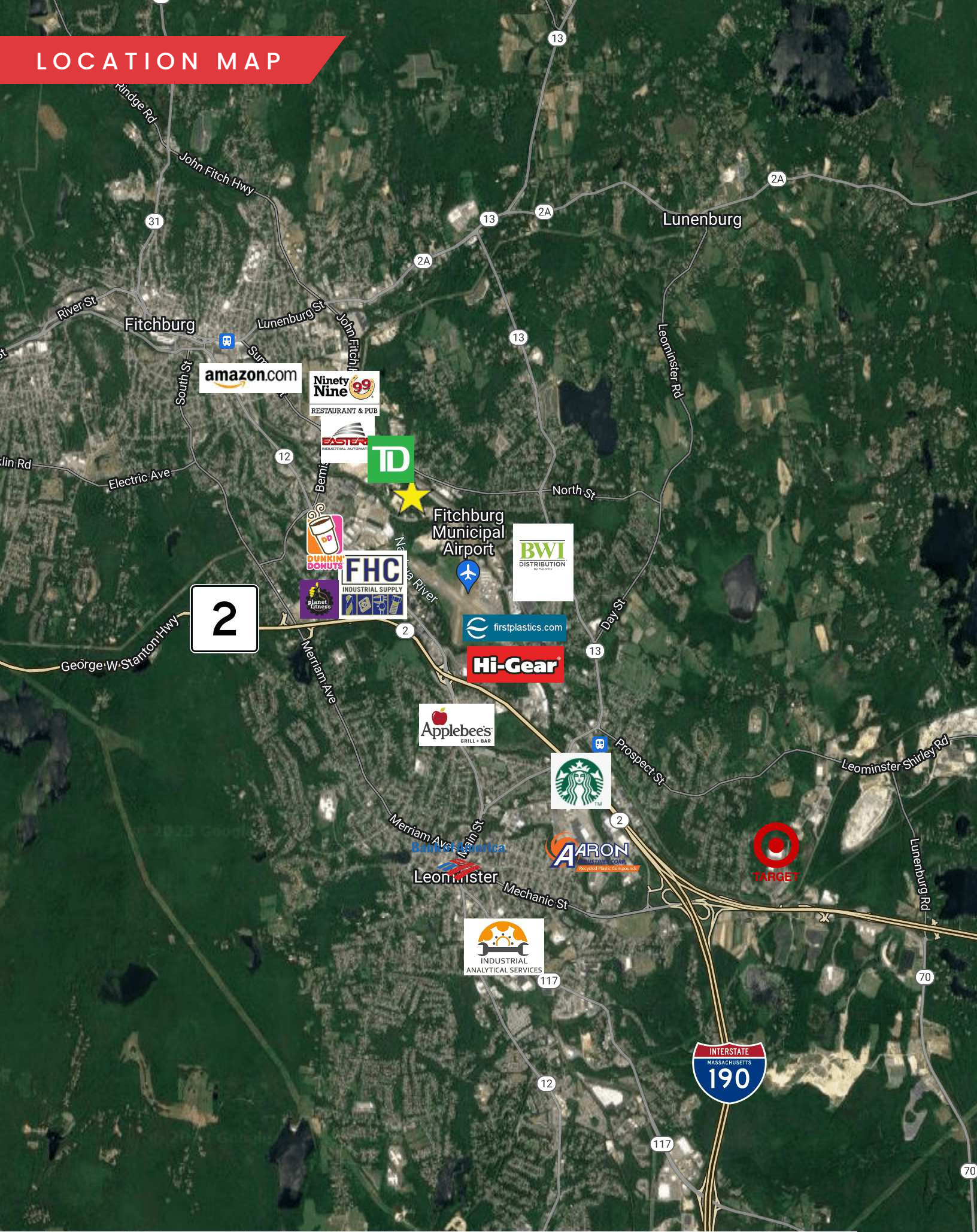
ADDITIONAL PHOTOS



ADDITIONAL PHOTOS



LOCATION MAP



50 CRAWFORD STREET

FITCHBURG, MA

FOR LEASE | 25,570 SF INDUSTRIAL WAREHOUSE

DAVID STUBBLEBINE

617.592.3391

david@stubblebinecompany.com

JAMES STUBBLEBINE

617.592.3388

james@stubblebinecompany.com

ALAN RINGUETTE

978.265.8112

alan@stubblebinecompany.com

JUSTIN HOPKINS

808.321.8000

Justin@stubblebinecompany.com

We obtained the information above from sources we believe to be reliable. However, we have not verified its accuracy and make no guarantee, warranty or representation about it. It is submitted subject to the possibility of errors, omissions, change of price, rental or other conditions, prior sale, lease or financing, or withdrawal without notice. We include projections, opinions, assumptions or estimates for example only, and they may not represent current or future performance of the property. You and your tax and legal advisors should conduct your own investigation of the property and transaction.



THE
STUBBLEBINE
COMPANY

CORFAC INTERNATIONAL