



114 W Rd

Styles Bridges Hwy



# 114 WEST ROAD

CANTERBURY, NH

37.4 ACRES | COMMERCIAL LAND FOR SALE

JAMES STUBBLEBINE  
DAVID STUBBLEBINE

617.592.3388  
617.592.3391

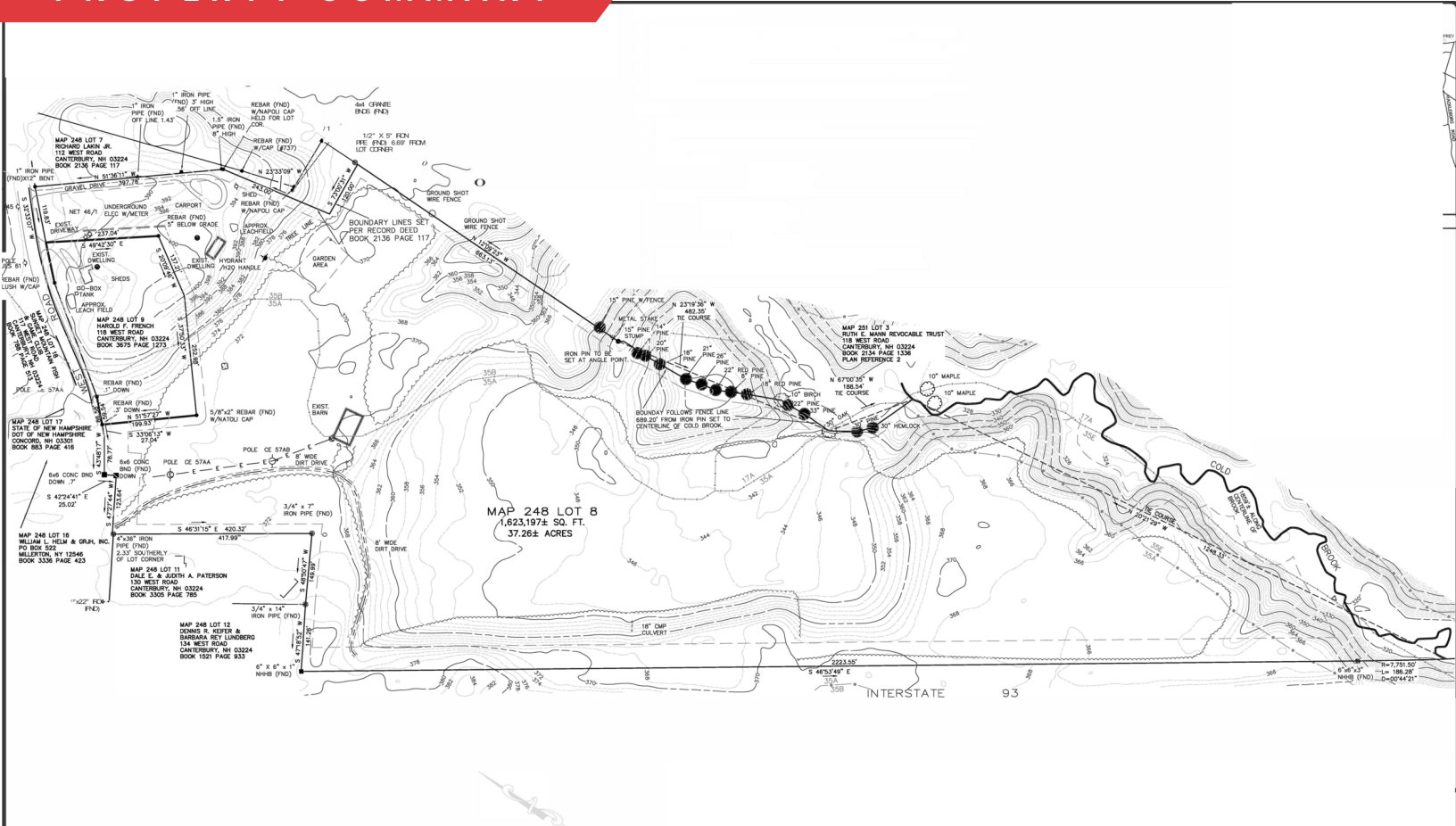
james@stubblebinecompany.com  
david@stubblebinecompany.com



THE  
STUBBLEBINE  
COMPANY

CORFAC INTERNATIONAL

# PROPERTY SUMMARY



## PROPERTY DESCRIPTION

37.4 Acres of Commercial Zoned Land for Sale

DEMOGRAPHICS	1 MILE	5 MILES	10 MILES
Total Households	73	5,734	31,157
Total Population	179	13,663	71,867
Average HH Income	\$104,208	\$85,273	\$81,397

## ZONING ALLOWANCES

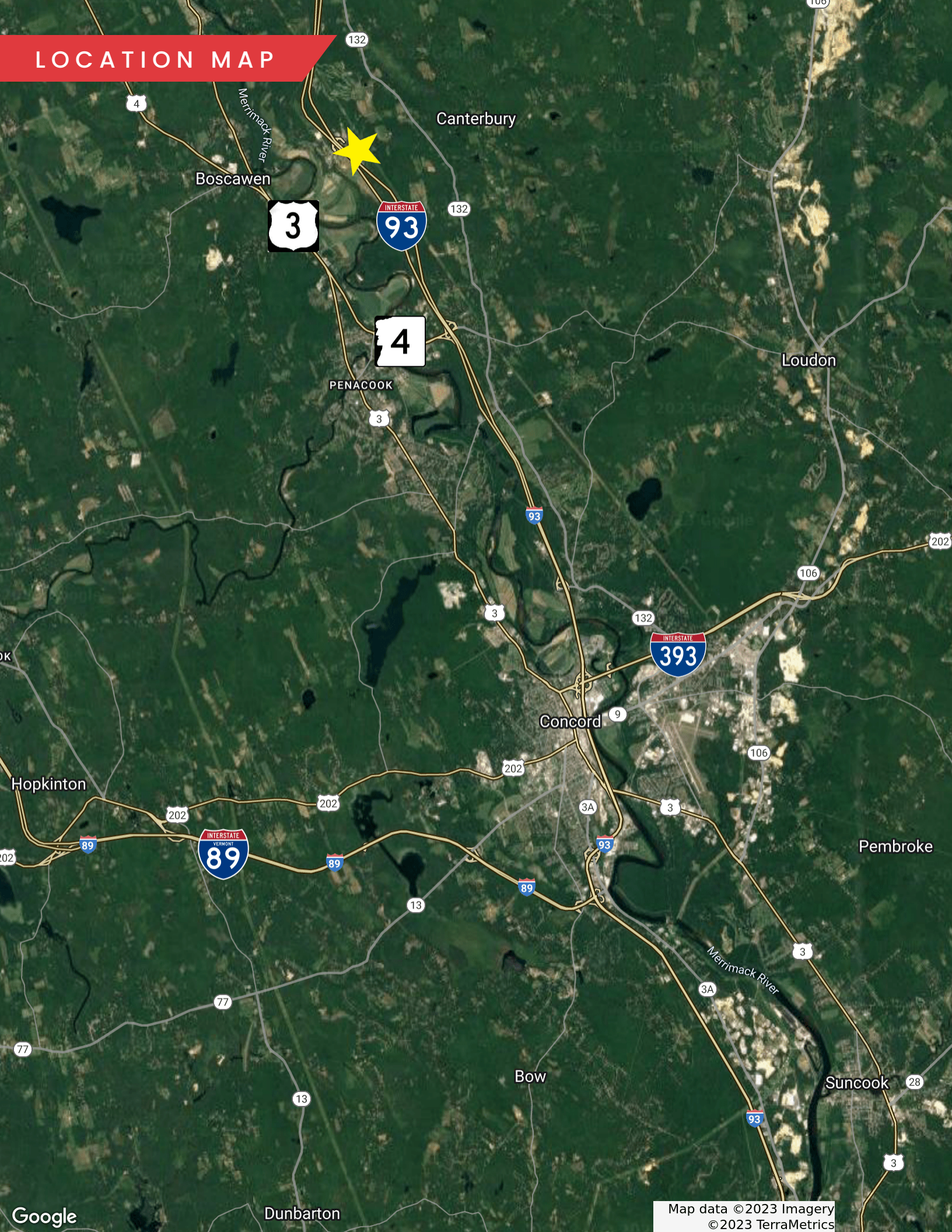
Lumberyard	Laundromat
Hotel	Auto Repair Garage
Laboratory	Gas Station
Restaurant	Office
Manufacturing	Agriculture

## OFFERING SUMMARY

Sale Price:	\$2,800,000
Lot Size:	37.4 Acres
Building Size:	2,546 SF
Zoning:	C



# LOCATION MAP





# 114 WEST ROAD CANTERBURY, NH

37.4 ACRES | COMMERCIAL LAND FOR SALE

JAMES STUBBLEBINE

617.592.3388

[james@stubblebinecompany.com](mailto:james@stubblebinecompany.com)

DAVID STUBBLEBINE

617.592.3391

[david@stubblebinecompany.com](mailto:david@stubblebinecompany.com)



We obtained the information above from sources we believe to be reliable. However, we have not verified its accuracy and make no guarantee, warranty or representation about it. It is submitted subject to the possibility of errors, omissions, change of price, rental or other conditions, prior sale, lease or financing, or withdrawal without notice. We include projections, opinions, assumptions or estimates for example only, and they may not represent current or future performance of the property. You and your tax and legal advisors should conduct your own investigation of the property and transaction.



THE  
STUBBLEBINE  
COMPANY

CORFAC INTERNATIONAL