



60 CLAYTON STREET

DORCHESTER, MA

16,000 SF | OFFICE/FLEX BUILDING FOR SALE

DEVON WAGNER
JAMES STUBBLEBINE
DAVID STUBBLEBINE

978.795.7933
617.592.3388
617.592.3391

devon@stubblebinecompany.com
james@stubblebinecompany.com
david@stubblebinecompany.com



THE
STUBBLEBINE
COMPANY

CORFAC INTERNATIONAL

PROPERTY SUMMARY



PROPERTY DESCRIPTION

16,000 SF Office/Flex Building for Sale

PROPERTY HIGHLIGHTS

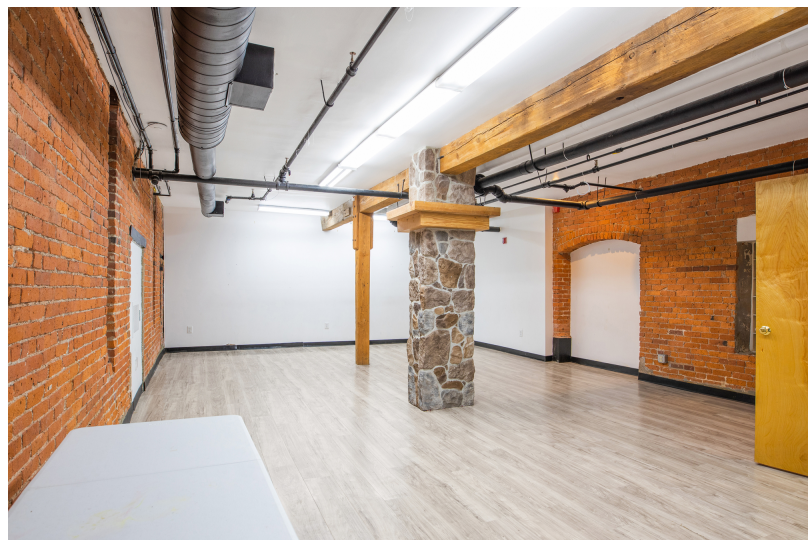
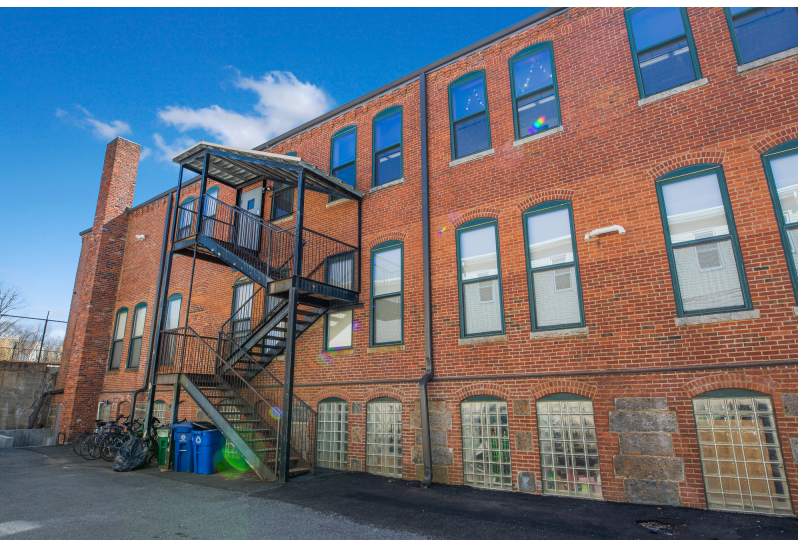
- This is a renovated mill building with exposed brick & wood beams and windows throughout.
- 0.5 Miles to I-93
- 1 Mile to Savin Hill MBTA Train Station
- 5 Miles to Downtown Boston

OFFERING SUMMARY

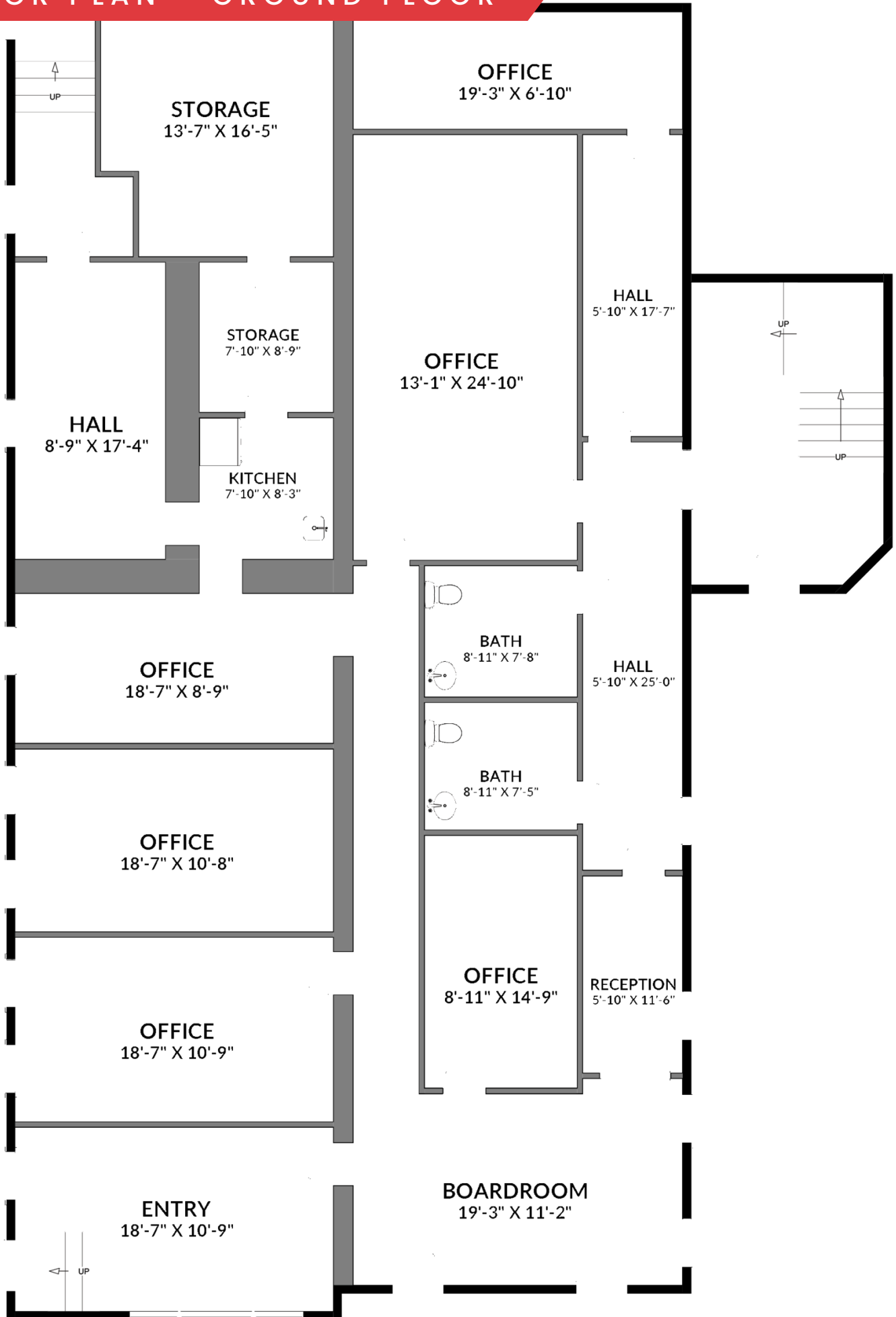
Lot Size:	0.46 Acres
Building Size:	16,000 SF
Zoning:	C
Built/Renovated:	1890/1999
Sprinklers:	Wet System
Parking:	30 Surface Spaces
FAR:	0.80
Taxes:	\$2.01/SF (2021)

DEMOGRAPHICS	3 MILES	5 MILES	10 MILES
Total Households	134,273	306,861	729,378
Total Population	319,463	698,484	1,725,613
Average HH Income	\$91,281	\$110,183	\$115,793

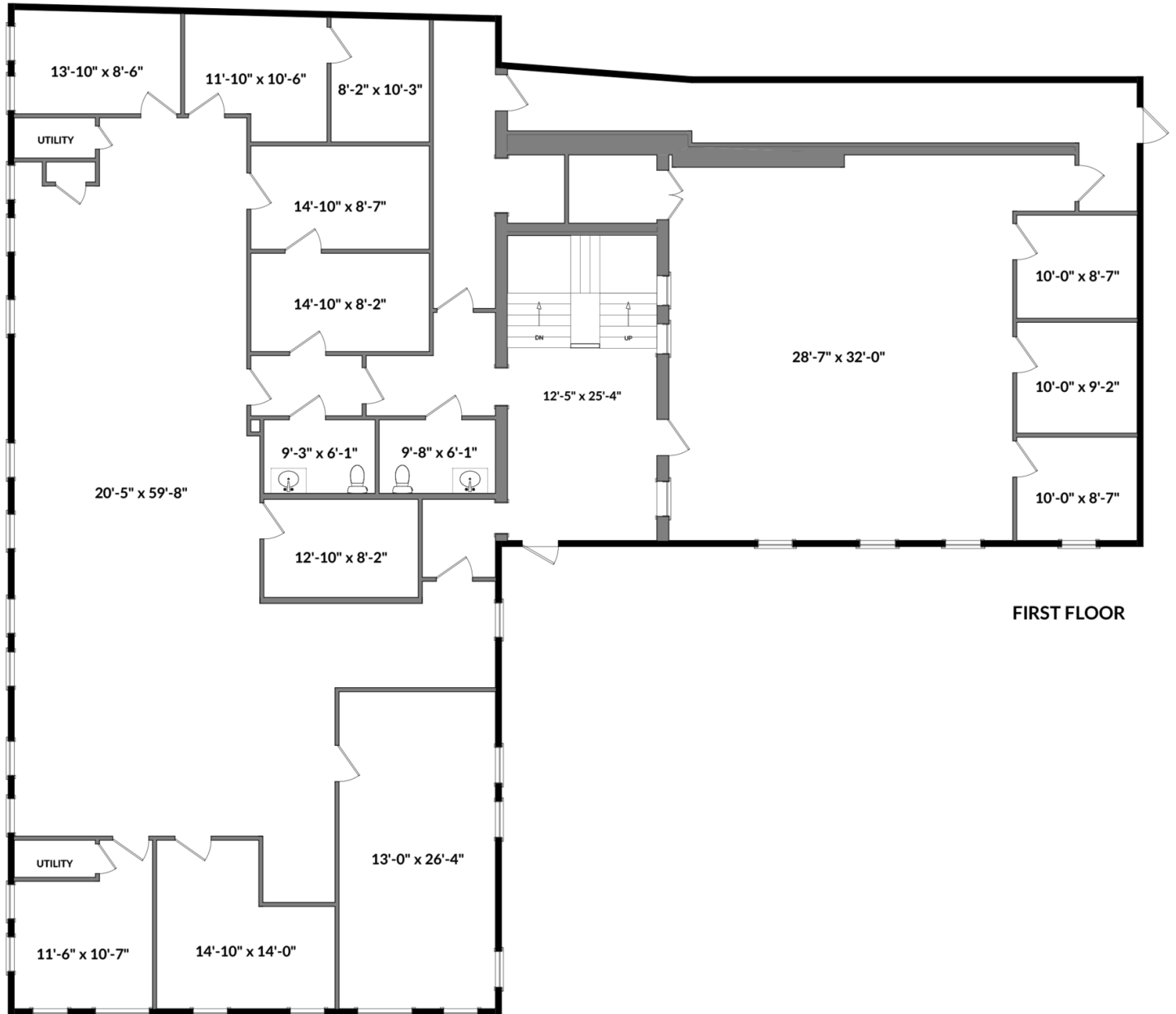
ADDITIONAL PHOTOS



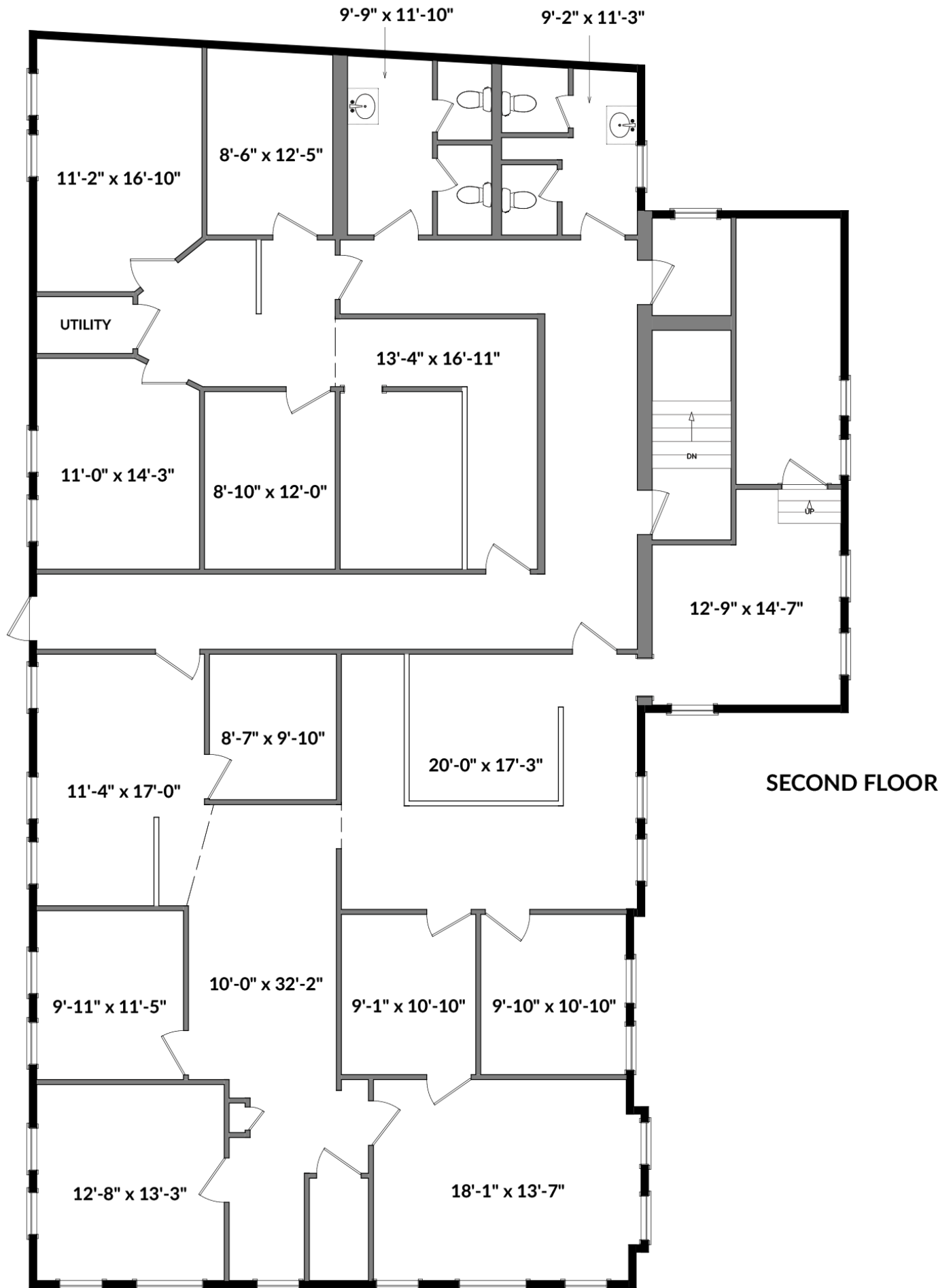
FLOOR PLAN - GROUND FLOOR



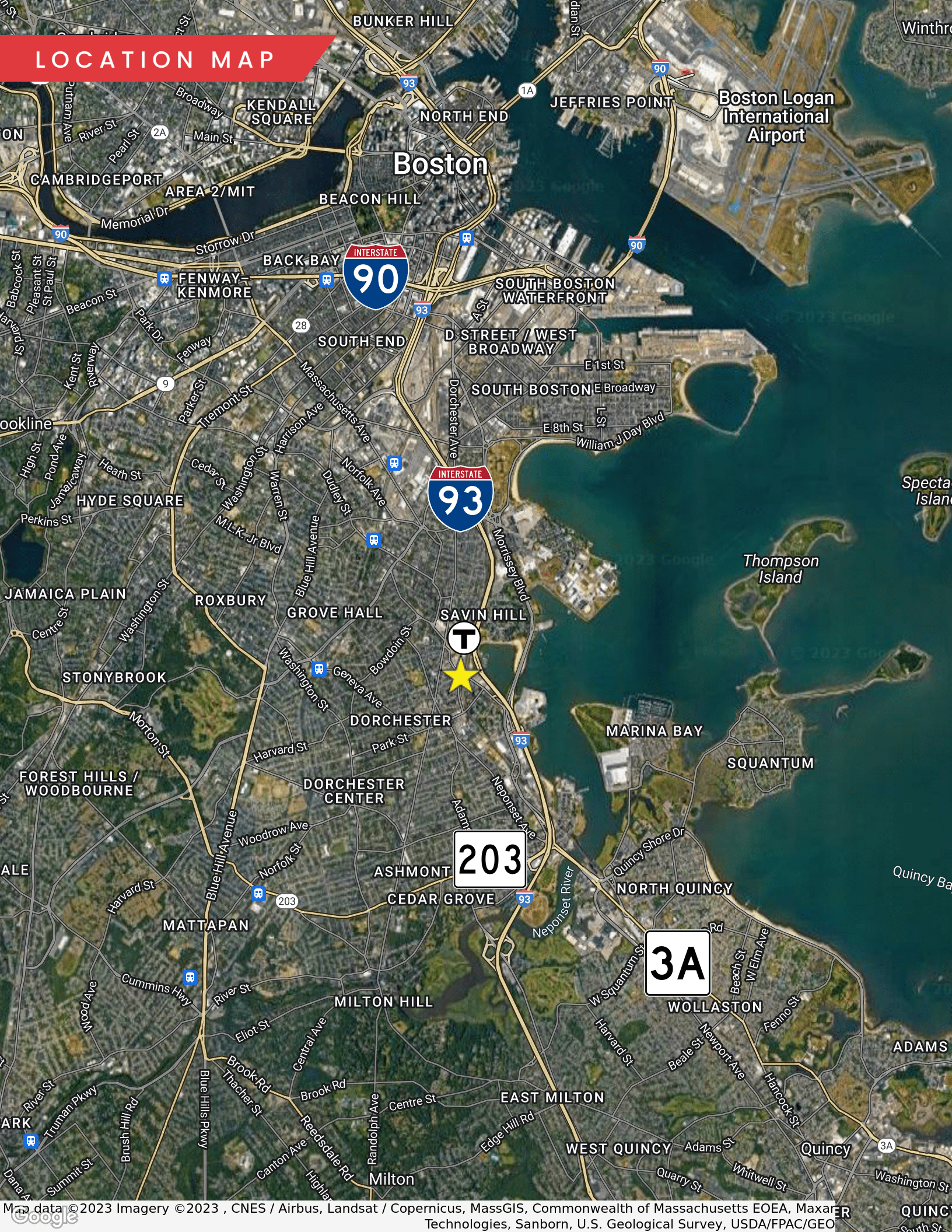
FLOOR PLAN - FIRST FLOOR



FLOOR PLAN - SECOND FLOOR



LOCATION MAP



60 CLAYTON STREET

DORCHESTER, MA

16,000 SF | OFFICE/FLEX BUILDING FOR SALE

DEVON WAGNER

978.795.7933

devon@stubblebinecompany.com

JAMES STUBBLEBINE

617.592.3388

james@stubblebinecompany.com

DAVID STUBBLEBINE

617.592.3391

david@stubblebinecompany.com

We obtained the information above from sources we believe to be reliable. However, we have not verified its accuracy and make no guarantee, warranty or representation about it. It is submitted subject to the possibility of errors, omissions, change of price, rental or other conditions, prior sale, lease or financing, or withdrawal without notice. We include projections, opinions, assumptions or estimates for example only, and they may not represent current or future performance of the property. You and your tax and legal advisors should conduct your own investigation of the property and transaction.



THE
STUBBLEBINE
COMPANY

CORFAC INTERNATIONAL