



# 24 BENNETT HIGHWAY

SAUGUS, MA

2.8 ACRES | COMMERCIAL/INDUSTRIAL LAND SITE FOR LEASE

- Improved with an 8,000 SF Industrial Building
- Mostly Paved Site
- 5 Miles to I-95
- 12 Miles to Boston Logan Airport



THE  
STUBBLEBINE  
COMPANY

CORFAC INTERNATIONAL



PROPERTY SUMMARY



PROPERTY DESCRIPTION

MOSTLY PAVED 2.8 ACRE COMMERCIAL/INDUSTRIAL LAND SITE FOR LEASE

PROPERTY HIGHLIGHTS

- Improved with an 8,000 SF Industrial Building
- Mostly Paved Site
- 5 Miles to I-95
- 12 Miles to Boston Logan Airport

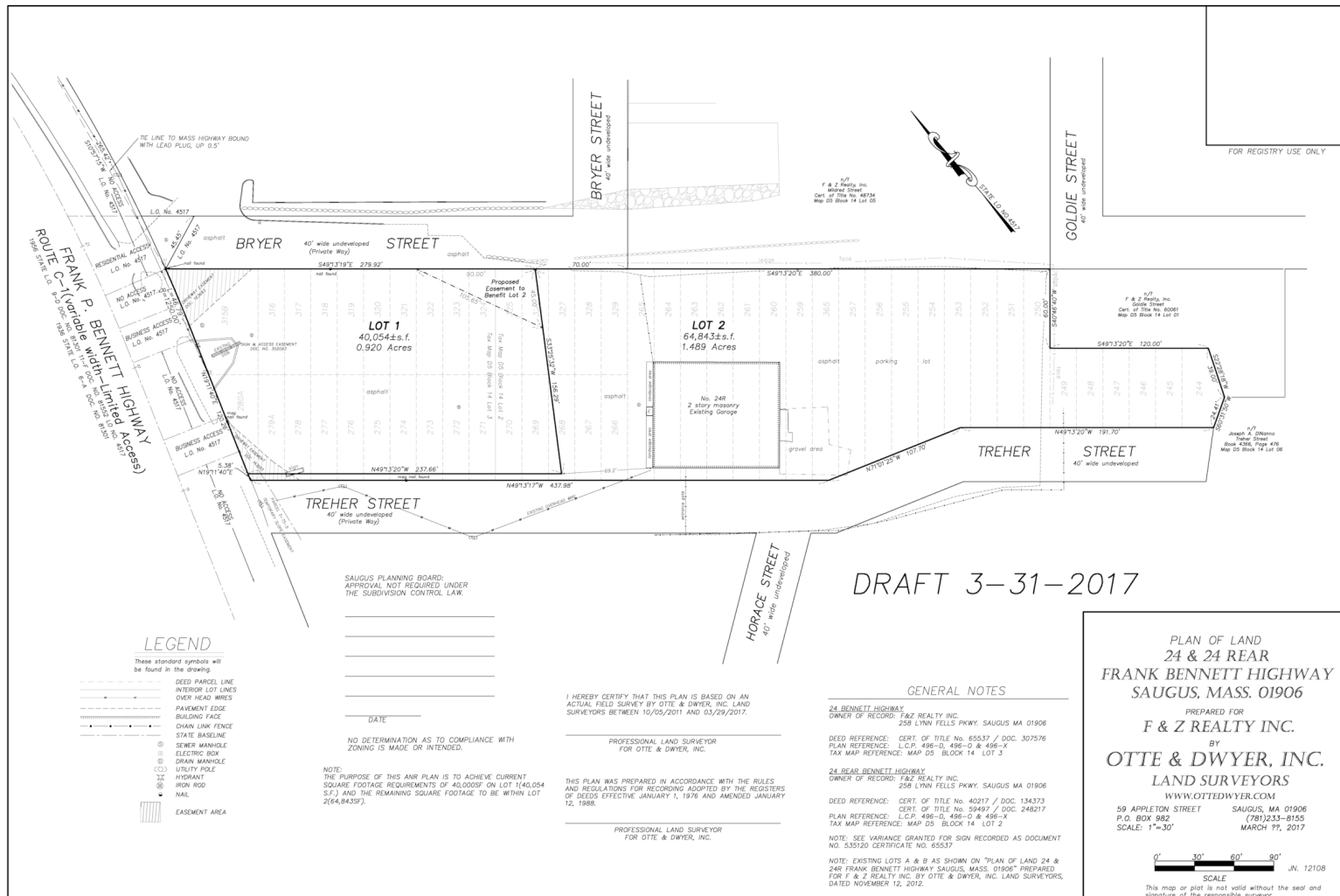
OFFERING SUMMARY

Lease Rate:	Market
Available SF:	2.8 Acres
Lot Size:	2.8 Acres Mostly Paved

DEMOGRAPHICS	50 MILES	100 MILES
Total Households	2,676,997	4,570,422
Total Population	6,604,404	10,566,659
Average HH Income	\$112,447	\$98,344

DEMOGRAPHICS	3 MILES	5 MILES
Total Households	67,940	173,196
Total Population	173,812	449,350
Average HH Income	\$100,943	\$99,071

# SITE PLAN





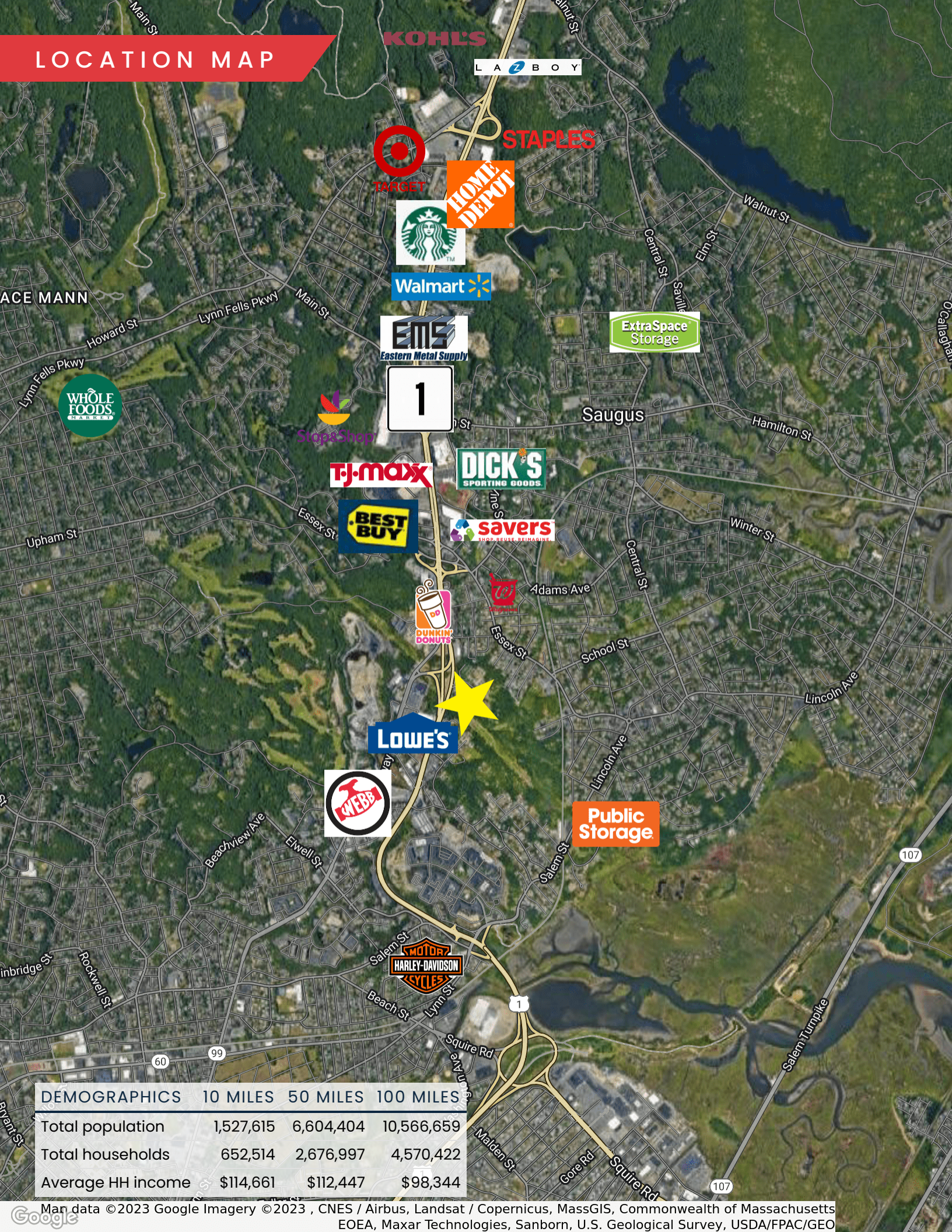


## SITE PLAN





# LOCATION MAP



DEMOGRAPHICS	10 MILES	50 MILES	100 MILES
Total population	1,527,615	6,604,404	10,566,659
Total households	652,514	2,676,997	4,570,422
Average HH income	\$114,661	\$112,447	\$98,344



# 24 BENNETT HIGHWAY

SAUGUS, MA

2.8 ACRES | COMMERCIAL/INDUSTRIAL LAND SITE FOR LEASE

DAVID STUBBLEBINE

617.592.3391

david@stubblebinecompany.com

JAMES STUBBLEBINE

617.592.3388

james@stubblebinecompany.com

Route 1 North

75,000 ADT

We obtained the information above from sources we believe to be reliable. However, we have not verified its accuracy and make no guarantee, warranty or representation about it. It is submitted subject to the possibility of errors, omissions, change of price, rental or other conditions, prior sale, lease or financing, or withdrawal without notice. We include projections, opinions, assumptions or estimates for example only, and they may not represent current or future performance of the property. You and your tax and legal advisors should conduct your own investigation of the property and transaction.



THE  
STUBBLEBINE  
COMPANY

CORFAC INTERNATIONAL