



180 MAIN STREET

FITCHBURG, MA

FOR LEASE | 12,198 SF ON 0.55 AC

**JAMES STUBBLEBINE
DEVON WAGNER**

**617.592.3388
978.795.7933**

**james@stubblebinecompany.com
devon@stubblebinecompany.com**



**THE
STUBBLEBINE
COMPANY**

CORFAC INTERNATIONAL

PROPERTY SUMMARY



PROPERTY DESCRIPTION

12,198 Flex Space for Lease

PROPERTY HIGHLIGHTS

- 2 Stories
- 6-Bay Garage
- Office and Warehouse Space
- New Heating System
- Excellent Visibility

OFFERING SUMMARY

AVAILABLE SF:	12,198 SF
LOT SIZE:	0.55 AC
YEAR BUILT:	1969
CONSTRUCTION:	STEEL
EXTERIOR WALL:	CONCRETE BLOCK
ZONING:	DOWNTOWN BUSINESS (DB)
HEAT:	OIL

ZONING ALLOWS:

- Motor Vehicle Repair/Body/Service Shop (with special permit)
- Vehicle Salvage Yard (with special permit)
- Open-Air Storage
- Business/Professional Office
- Light/Heavy Manufacturing
- Wholesale/Warehouse/Self-Storage/Distribution
- Lumberyard
- Research and Testing
- Publishing and Printing

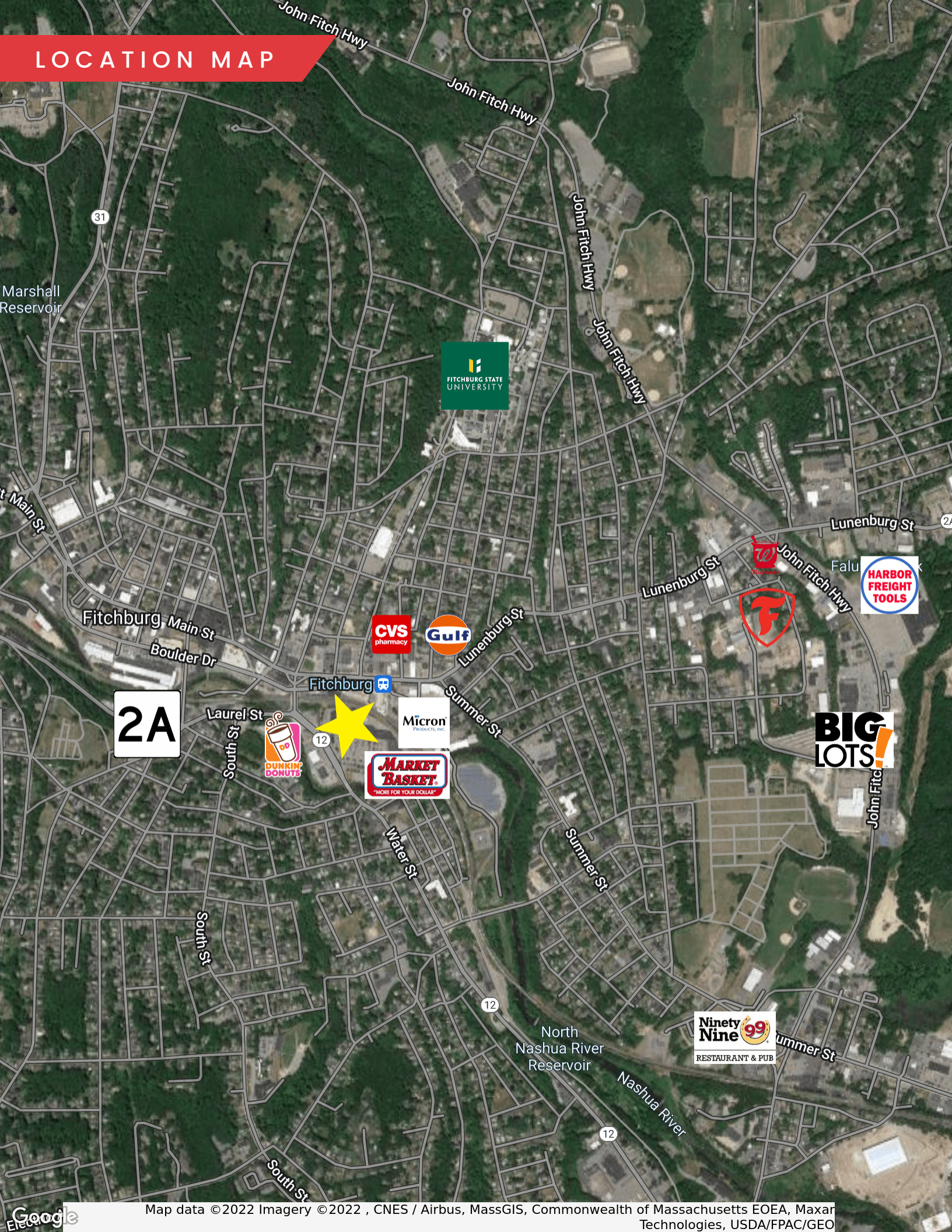
SITE PHOTOS



INTERIOR PHOTOS



LOCATION MAP



2A



180 MAIN STREET

FITCHBURG, MA

FOR LEASE | 12,198 SF ON 0.55 AC

JAMES STUBBLEBINE

617.592.3388

james@stubblebinecompany.com

DEVON WAGNER

978.795.7933

devon@stubblebinecompany.com

We obtained the information above from sources we believe to be reliable. However, we have not verified its accuracy and make no guarantee, warranty or representation about it. It is submitted subject to the possibility of errors, omissions, change of price, rental or other conditions, prior sale, lease or financing, or withdrawal without notice. We include projections, opinions, assumptions or estimates for example only, and they may not represent current or future performance of the property. You and your tax and legal advisors should conduct your own investigation of the property and transaction.



THE
STUBBLEBINE
COMPANY

CORFAC INTERNATIONAL