



301 CONCORD STREET

PAWTUCKET, RI

FOR LEASE | 2,000 SF - 15,600 SF AVAILABLE ON 9.02 ACRES

CHRIS MICHNIEWICZ
DAVID BERMAN

774.994.1698
413.636.9055

chris@stubblebinecompany.com
dberman@stubblebinecompany.com



THE
STUBBLEBINE
COMPANY

CORFAC INTERNATIONAL

PROPERTY SUMMARY



PROPERTY HIGHLIGHTS

- 3 GROUND LEVEL DOORS (EXPANDABLE)
- CITY/WATER/SEWER
- 16' CLEAR HEIGHT
- VISIBILITY FROM I-95
- EASY ACCESS TO HIGHWAY
- 5 LOADING DOCK DOOR

OFFERING SUMMARY

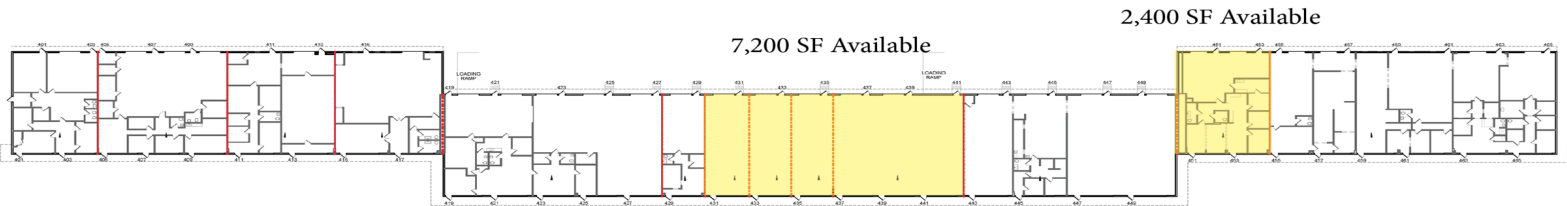
Lease Rate:	MARKET
Available SF:	2,000 - 15,600 SF
Contiguous Space:	2,000 SF - 7,200 SF
Lot Size:	9.02 Acres
Building Size:	66,400 SF

DEMOGRAPHICS	3 MILES	5 MILES
Total Households	9,775	75,165
Total Population	23,952	193,604
Average HH Income	\$51,964	\$58,414

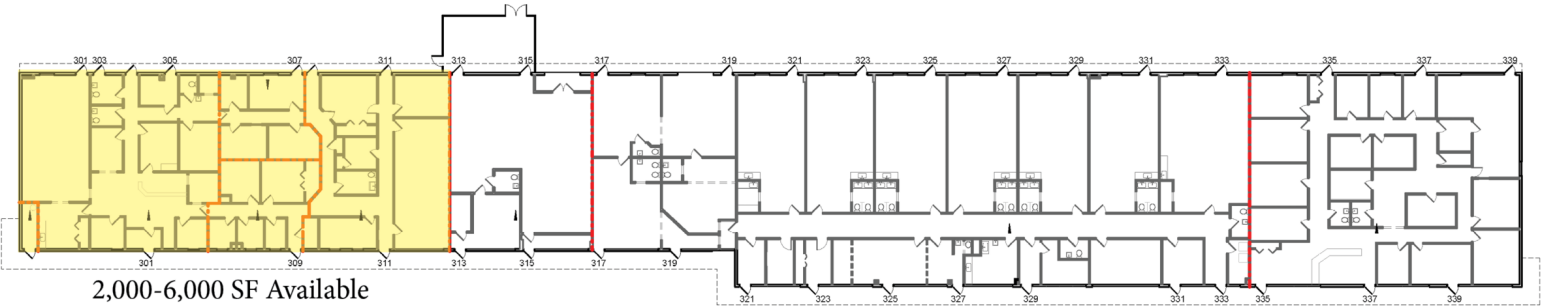
ADDITIONAL PHOTOS



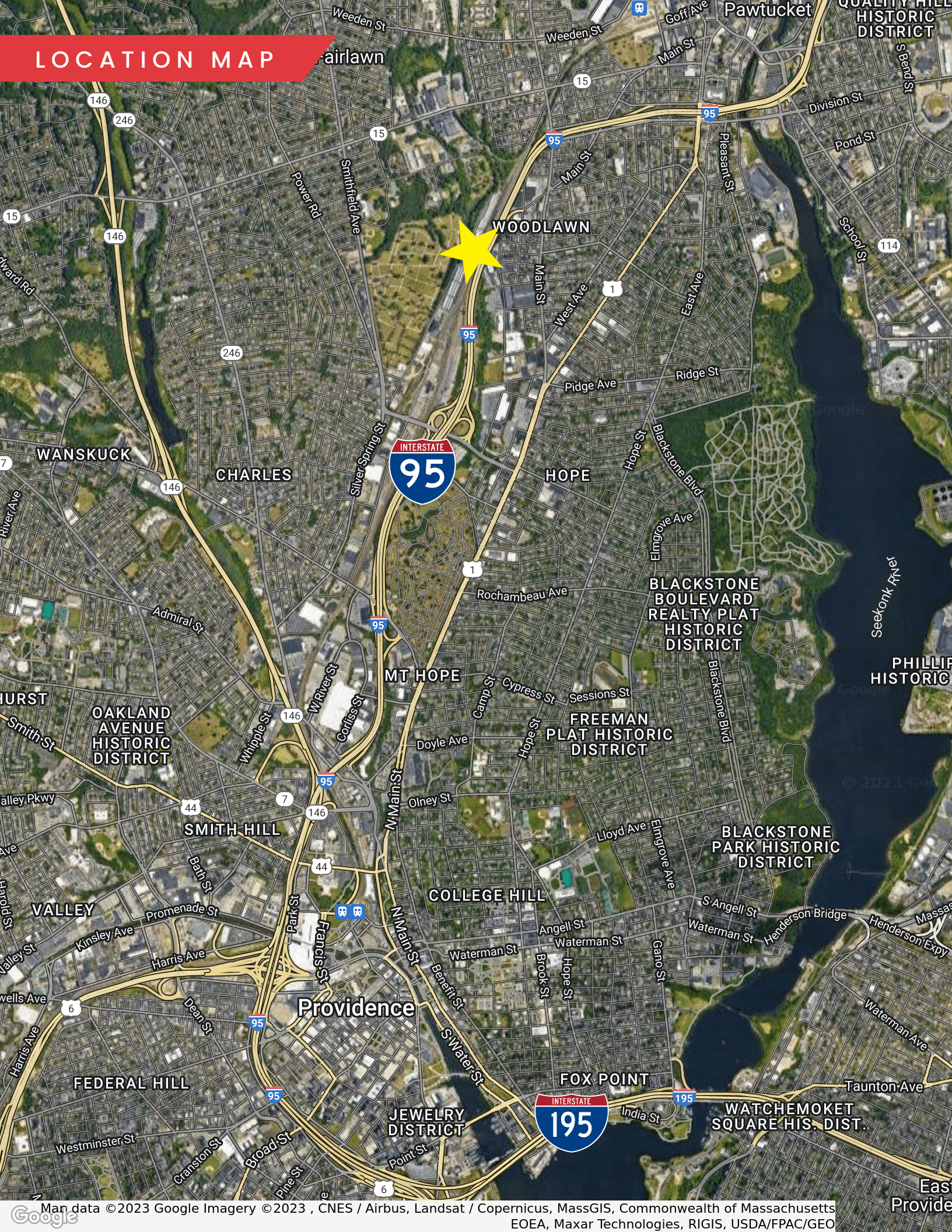
FLOOR PLAN



FLOOR PLAN



LOCATION MAP



301 CONCORD STREET

PAWTUCKET, RI

FOR LEASE | 2,000 SF - 15,600 SF AVAILABLE ON 9.02 ACRES

CHRIS MICHNIEWICZ
774.994.1698
chris@stubblebinecompany.com

DAVID BERMAN
413.636.9055
dberman@stubblebinecompany.com

We obtained the information above from sources we believe to be reliable. However, we have not verified its accuracy and make no guarantee, warranty or representation about it. It is submitted subject to the possibility of errors, omissions, change of price, rental or other conditions, prior sale, lease or financing, or withdrawal without notice. We include projections, opinions, assumptions or estimates for example only, and they may not represent current or future performance of the property. You and your tax and legal advisors should conduct your own investigation of the property and transaction.



THE
STUBBLEBINE
COMPANY

CORFAC INTERNATIONAL