

# 540 MAIN STREET

TEWKSBURY, MA



## 40,900 SF

FLEX BUILDING FOR SALE

- LESS THAN A MILE TO I-495  
- 2.37 PAVED ACRES



### CONTACT:

DAVID STUBBLEBINE  
JAMES STUBBLEBINE  
ELLEN GARTHOFF

617.592.3391  
617.592.3388  
978.760.1263

DAVID@STUBBLEBINECOMPANY.COM  
JAMES@STUBBLEBINECOMPANY.COM  
ELLEN@STUBBLEBINECOMPANY.COM

EXCLUSIVE OFFERING



THE  
STUBBLEBINE  
COMPANY

CORFAC INTERNATIONAL



PROPERTY SUMMARY



PROPERTY DESCRIPTION

40,900 SF Flex Building For Sale

PROPERTY HIGHLIGHTS

- Free standing building on 2.37 paved acres
- Less than a mile off of I-495

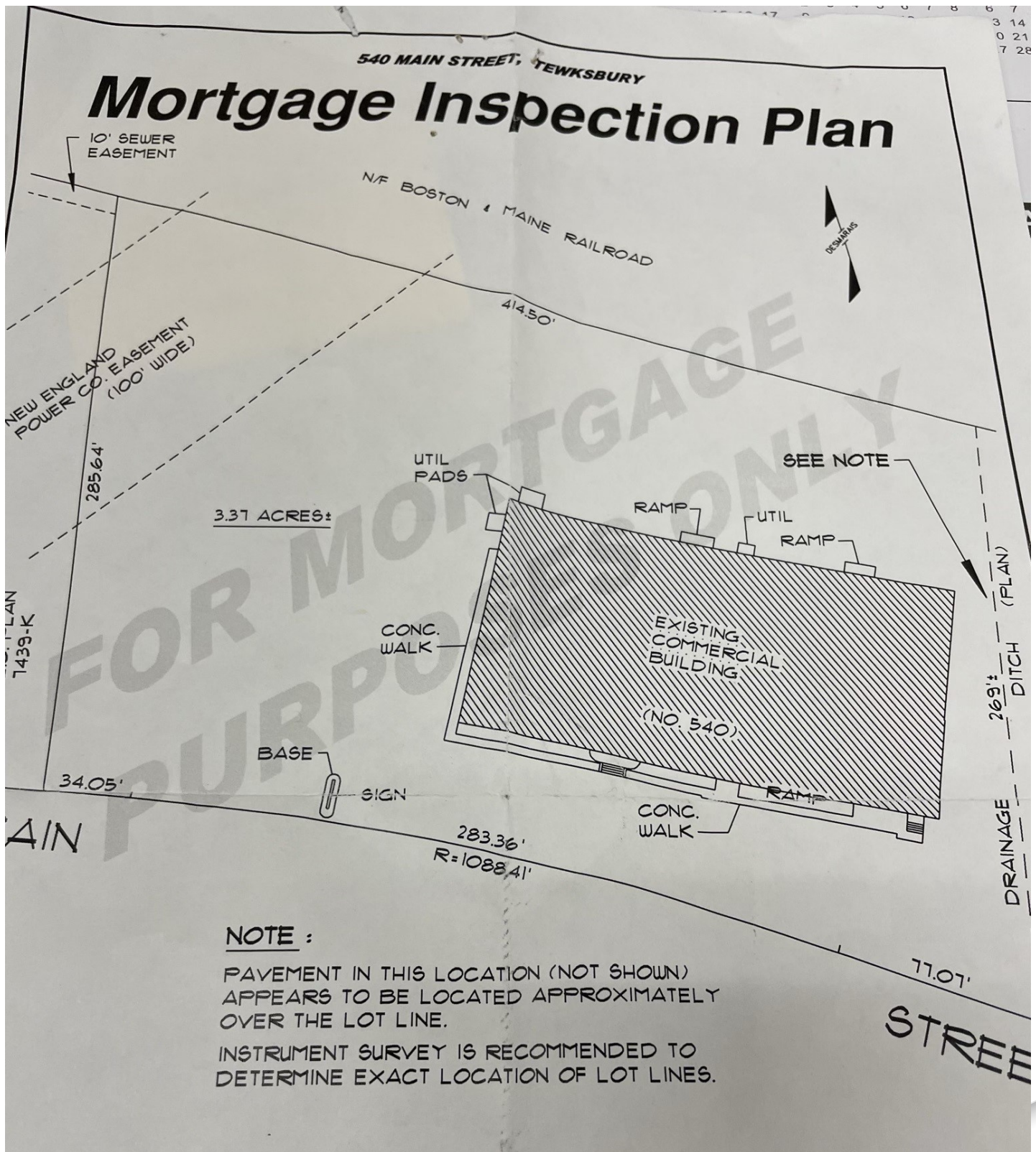
OFFERING SUMMARY

LOT SIZE:	2.37 Acres
BUILDING SIZE:	40,900 SF
ZONING:	Commercial
FRONTAGE:	360' on Main Street
PARKING:	60 spaces
RE TAXES:	\$0.91/SF (2021)
SALE PRICE:	Market

DEMOGRAPHICS	3 MILES	5 MILES
TOTAL HOUSEHOLDS	70,765	21,655
TOTAL POPULATION	188,630	55,616
AVERAGE HH INCOME	\$99,236	\$105,015



## SITE PLAN



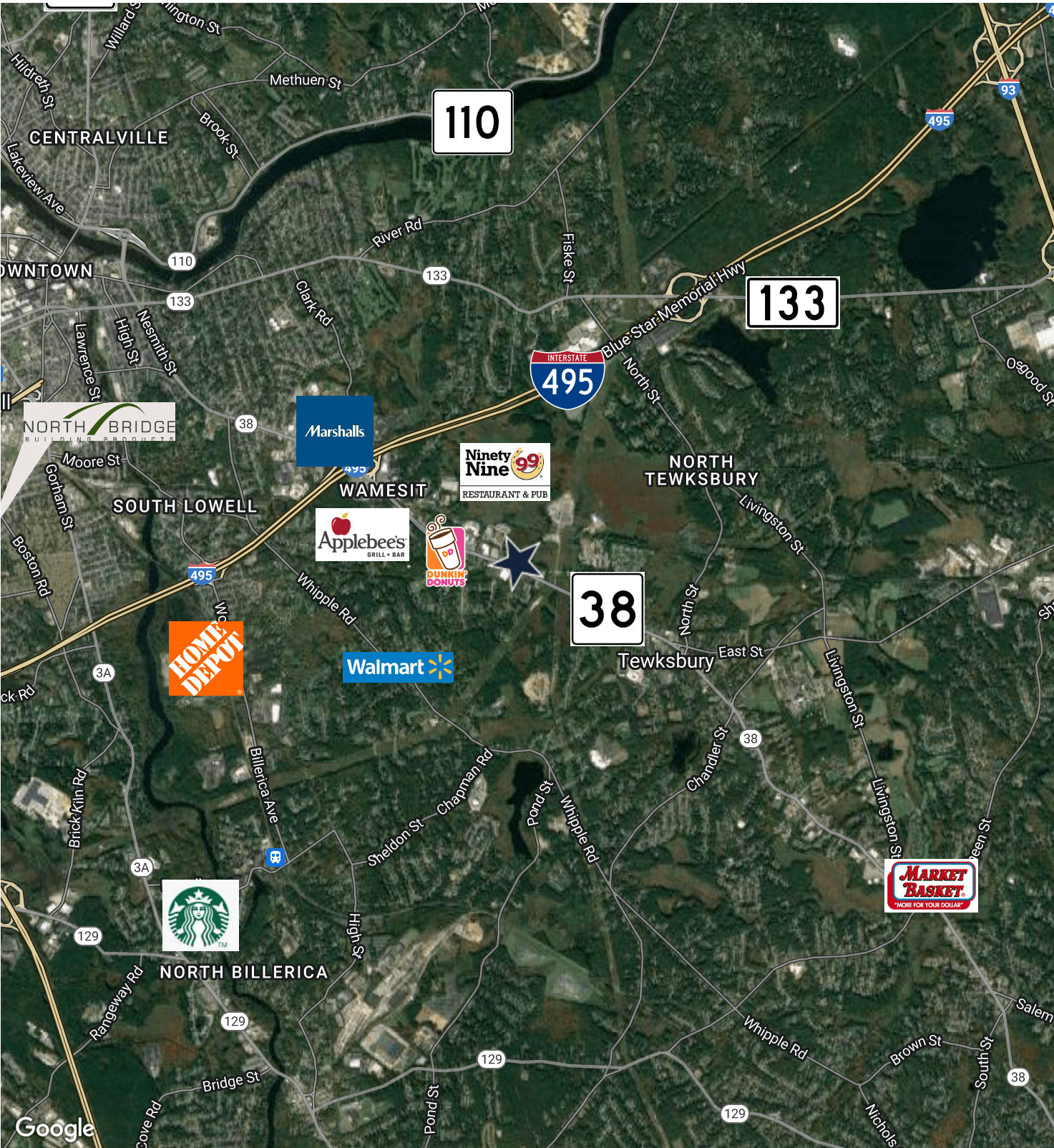
THE  
STUBBLEBINE  
COMPANY

CORFAC INTERNATIONAL

THE STUBBLEBINE COMPANY  
ONE CRANBERRY HILL | LEXINGTON, MA  
STUBBLEBINECOMPANY.COM



LOCATION MAP





# 540 MAIN STREET

TEWKSBURY, MA



## CONTACT:

DAVID STUBBLEBINE  
JAMES STUBBLEBINE  
ELLEN GARTHOFF

617.592.3391  
617.592.3388  
978.760.1263

DAVID@STUBBLEBINECOMPANY.COM  
JAMES@STUBBLEBINECOMPANY.COM  
ELLEN@STUBBLEBINECOMPANY.COM

EXCLUSIVE OFFERING



THE  
STUBBLEBINE  
COMPANY

CORFAC INTERNATIONAL