

540 MAIN STREET

TEWKSBURY, MA



40,900 SF

FLEX BUILDING FOR SALE

- LESS THAN A MILE TO I-495
- 2.37 PAVED ACRES



CONTACT:

DAVID STUBBLEBINE
JAMES STUBBLEBINE
ELLEN GARTHOFF

617.592.3391
617.592.3388
978.760.1263

DAVID@STUBBLEBINECOMPANY.COM
JAMES@STUBBLEBINECOMPANY.COM
ELLEN@STUBBLEBINECOMPANY.COM

EXCLUSIVE OFFERING



THE
STUBBLEBINE
COMPANY

CORFAC INTERNATIONAL

PROPERTY SUMMARY

PROPERTY DESCRIPTION

40,900 SF Flex Building For Sale

PROPERTY HIGHLIGHTS

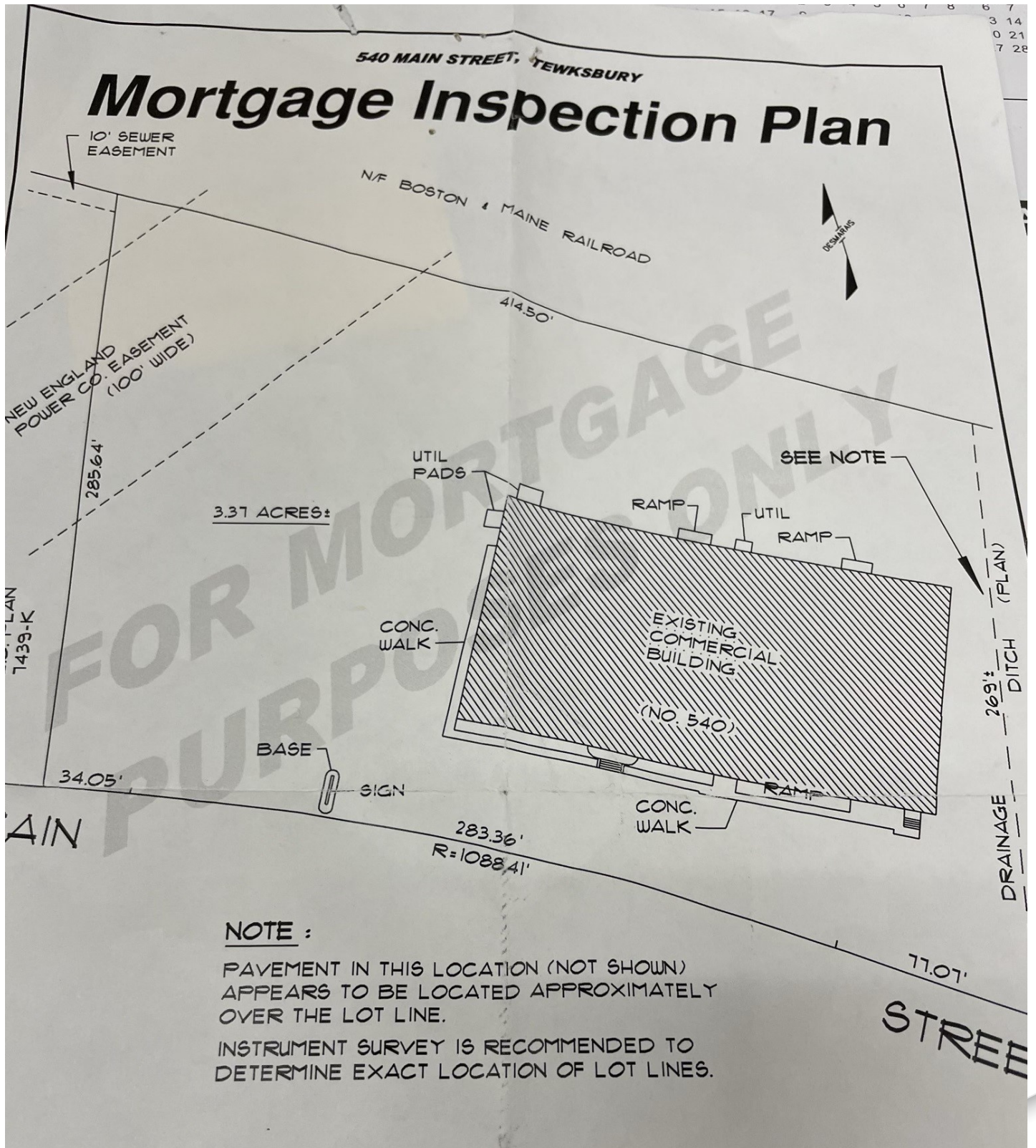
- Free standing building on 2.37 paved acres
- Less than a mile off of I-495

OFFERING SUMMARY

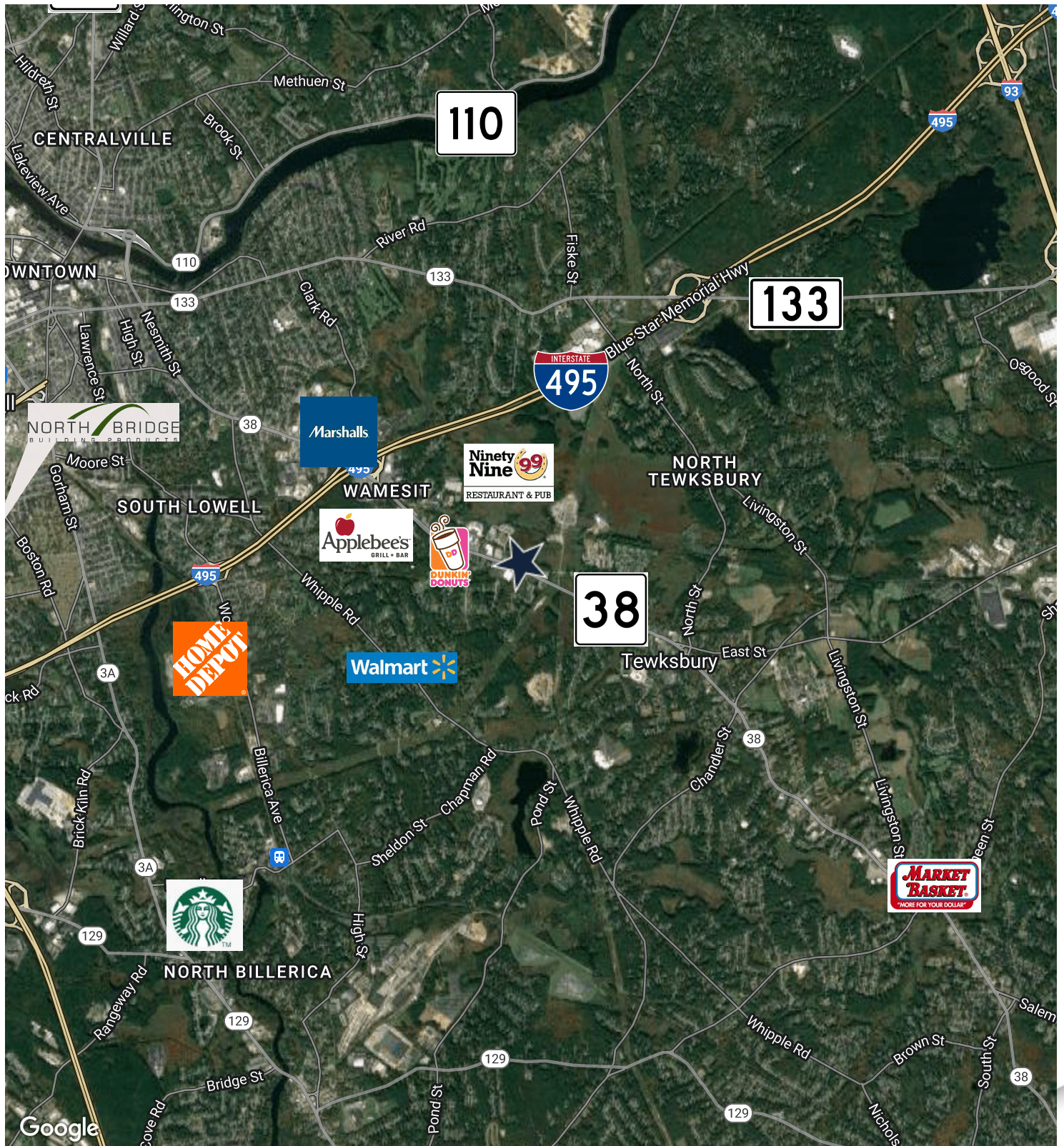
LOT SIZE:	2.37 Acres
BUILDING SIZE:	40,900 SF
ZONING:	Commercial
FRONTAGE:	360' on Main Street
PARKING:	60 spaces
RE TAXES:	\$0.91/SF (2021)
SALE PRICE:	Market

DEMOGRAPHICS	3 MILES	5 MILES
TOTAL HOUSEHOLDS	70,765	21,655
TOTAL POPULATION	188,630	55,616
AVERAGE HH INCOME	\$99,236	\$105,015

SITE PLAN



LOCATION MAP



540 MAIN STREET

TEWKSBURY, MA



CONTACT:

DAVID STUBBLEBINE
JAMES STUBBLEBINE
ELLEN GARTHOFF

617.592.3391
617.592.3388
978.760.1263

DAVID@STUBBLEBINECOMPANY.COM
JAMES@STUBBLEBINECOMPANY.COM
ELLEN@STUBBLEBINECOMPANY.COM

EXCLUSIVE OFFERING



THE
STUBBLEBINE
COMPANY

CORFAC INTERNATIONAL