

# 1053 TURNPIKE STREET

STOUGHTON, MA



# 14,563 SF

INDUSTRIAL SPACE FOR  
SUBLEASE

**CONTACT:**

CHRIS MICHNIEWICZ  
DAVID SKINNER

774.994.1698  
617.999.0057

CHRIS@STUBBLEBINECOMPANY.COM  
DSKINNER@STUBBLEBINECOMPANY.COM

EXCLUSIVE OFFERING



THE  
STUBBLEBINE  
COMPANY

CORFAC INTERNATIONAL

## PROPERTY SUMMARY



### PROPERTY DESCRIPTION

14,563 SF Industrial Space for Sub-lease Available now until November 30, 2025

### PROPERTY HIGHLIGHTS

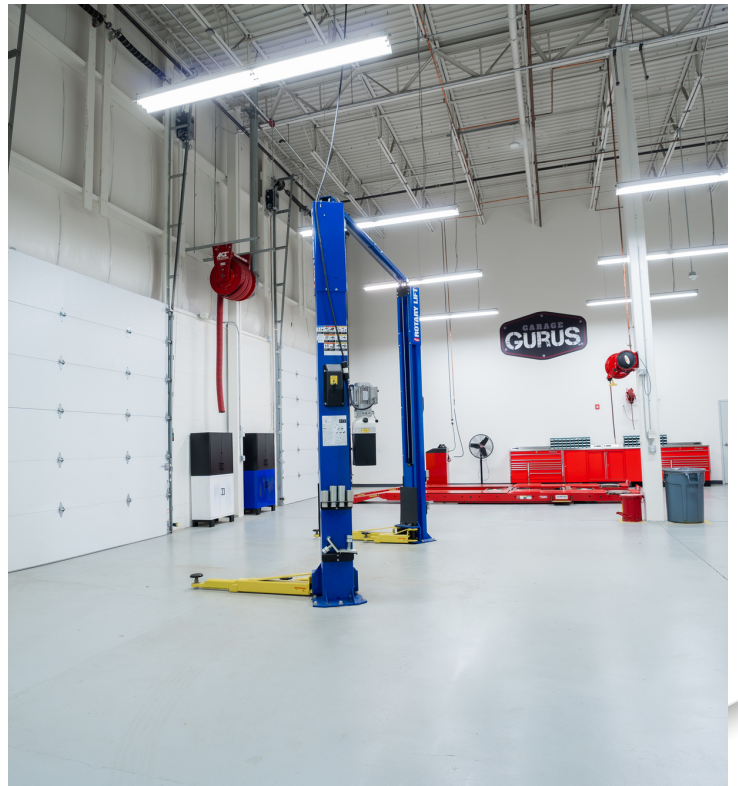
- 1st Class Industrial Building
- 26' Clear Ceiling Heights
- Conveniently Located with Close Proximity to Route 24

DEMOGRAPHICS	0.5 MILES	1 MILE	1.5 MILES
TOTAL HOUSEHOLDS	281	1,343	3,828
TOTAL POPULATION	728	3,482	9,877
AVERAGE HH INCOME	\$103,563	\$98,361	\$95,409

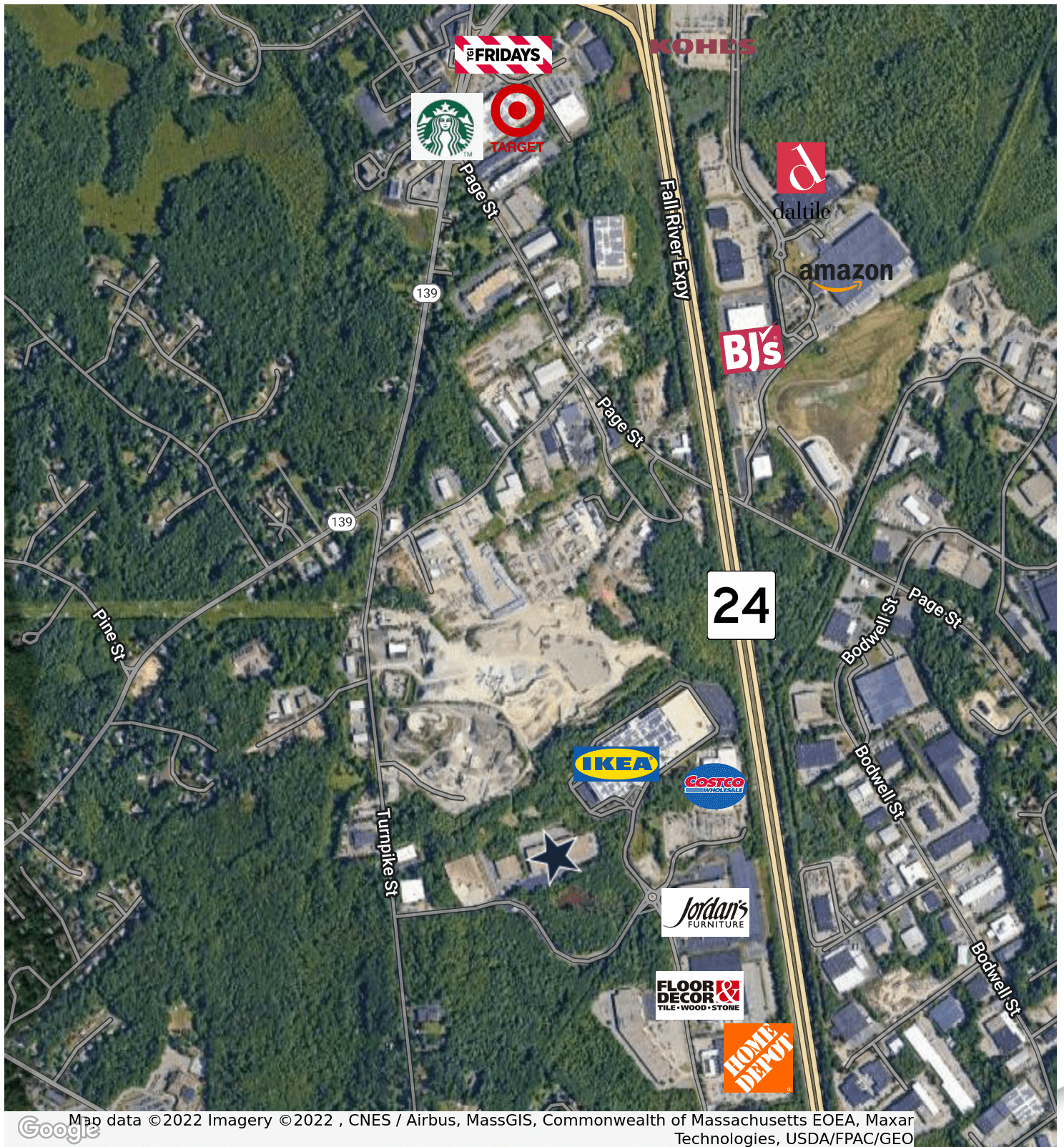
### OFFERING SUMMARY

AVAILABLE SF:	14,563 SF
WAREHOUSE:	10,263 SF
OFFICE:	4,300 SF
LOT SIZE:	9 Acres
BUILDING SIZE:	102,386 SF
LOADING:	One (1) loading docks Three (3) overhead doors
CEILING HEIGHT:	25'6"-26'
COLUMN SPACING:	25' x 50'
SPRINKLERS:	Wet system
POWER:	200 amps, 277-480 volts
HEAT:	Gas
WATER/SEWER:	Town
ZONING:	Industrial
RENTAL RATE:	\$9/SF NNN

## ADDITIONAL PHOTOS



# LOCATION MAP



Google

Map data ©2022 Imagery ©2022 , CNES / Airbus, MassGIS, Commonwealth of Massachusetts EOE, Maxar Technologies, USDA/FPAC/GEO

# 1053 TURNPIKE STREET

STOUGHTON, MA



**CONTACT:**  
CHRIS MICHNIEWICZ 774.994.1698 CHRIS@STUBBLEBINECOMPANY.COM  
DAVID SKINNER 617.999.0057 DSKINNER@STUBBLEBINECOMPANY.COM

EXCLUSIVE OFFERING  
 THE  
STUBBLEBINE  
COMPANY

CORFAC INTERNATIONAL