



100 CUMMINGS CENTER

BEVERLY, MA

20,464 SF | FLEX SPACE FOR SUBLEASE

DAVID STUBBLEBINE
DANNY CRUZ

617.592.3391
978.305.0473

david@stubblebinecompany.com
danny@stubblebinecompany.com



THE
STUBBLEBINE
COMPANY

CORFAC INTERNATIONAL

PROPERTY SUMMARY



PROPERTY DESCRIPTION

20,464 SF FLEX SPACE FOR SUBLEASE

PROPERTY HIGHLIGHTS

- OPEN/FLEXIBLE LAYOUT WITH 11' X 20' COLUMN SPACING
- EXCELLENT NATURAL LIGHT
- 14' CLEAR HEIGHT
- FULLY AIR CONDITIONED
- LESS THAN A MILE TO BEVERLY COMMUTER RAIL
- 2.5 MILES TO ROUTE 128

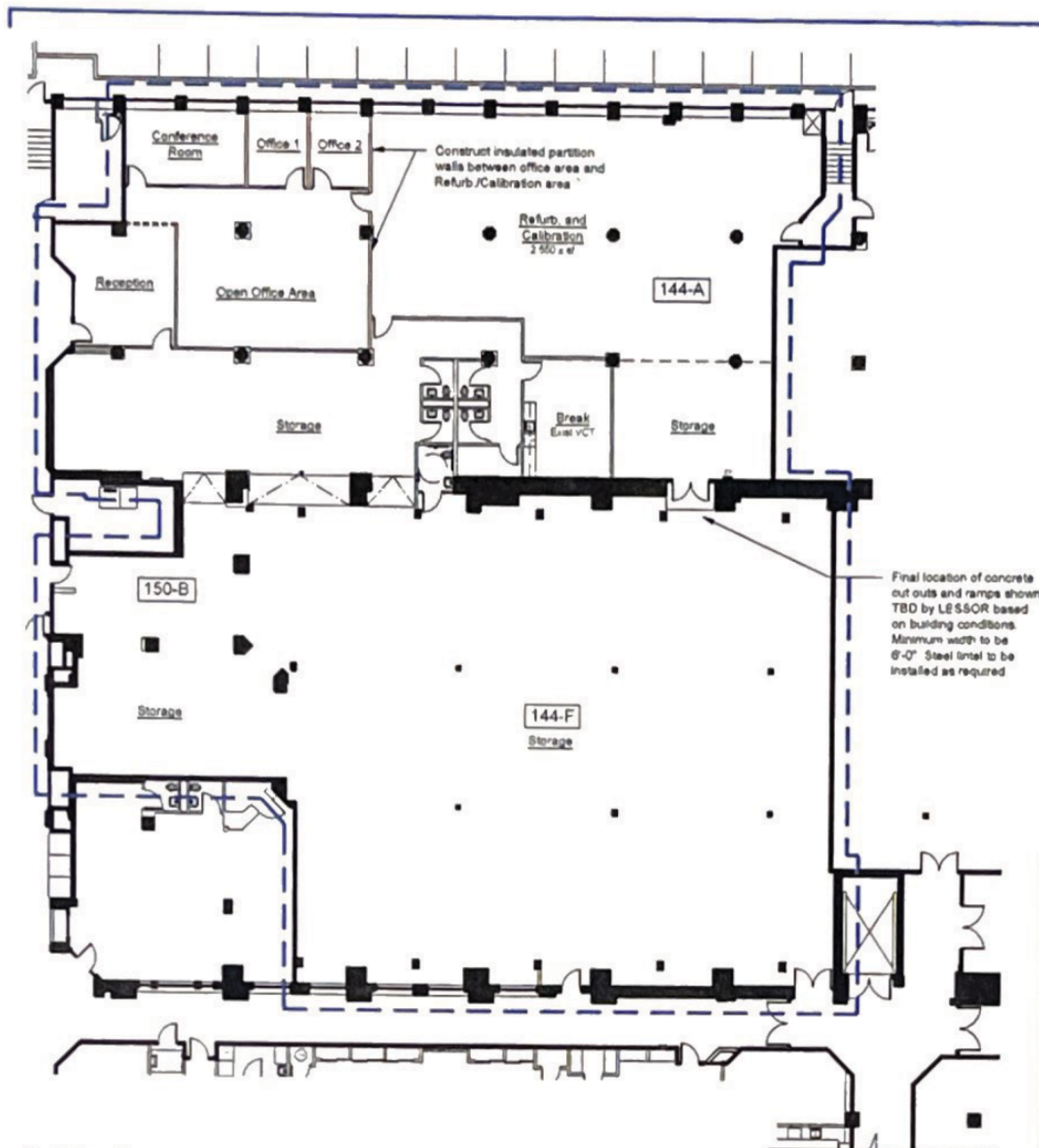
OFFERING SUMMARY

LEASE RATE:	MARKET
AVAILABLE SF:	20,464 SF
BUILDING SIZE:	1,356,891 SF

DEMOGRAPHICS	0.25 MILES	0.5 MILES	1 MILE
Total Households	391	1,952	6,722
Total Population	885	4,355	14,611
Average HH Income	\$74,837	\$82,846	\$90,541



FLOOR PLANS



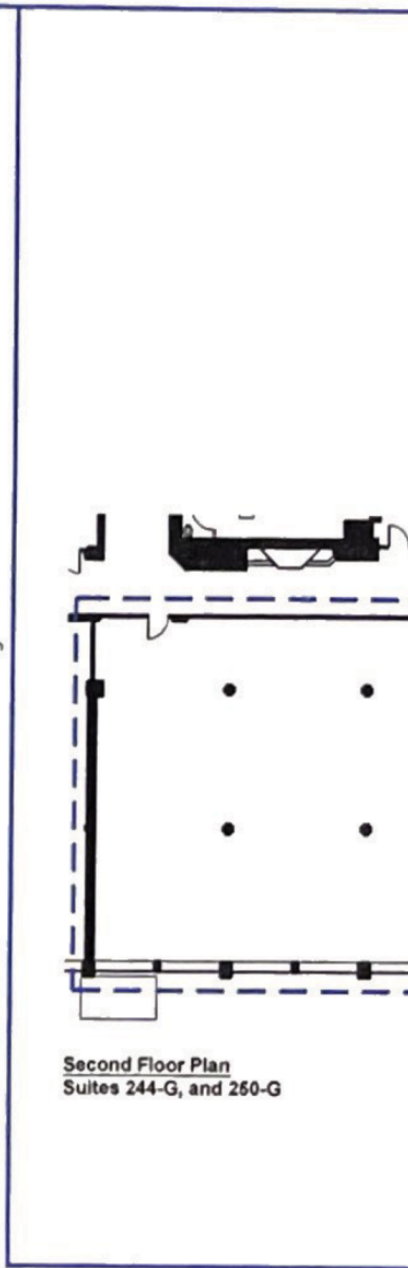
First Floor Plan
Suites 144-A, 144-F, 150-B

Leasable Square Footage Summary	
Suites 144-A, 144-F, 150-B	16,893 ± LSF
Suite 143-L	3,571 ± LSF
Suites 244-G, 250-G	11,583 ± LSF
Total	34,047 ± LSF

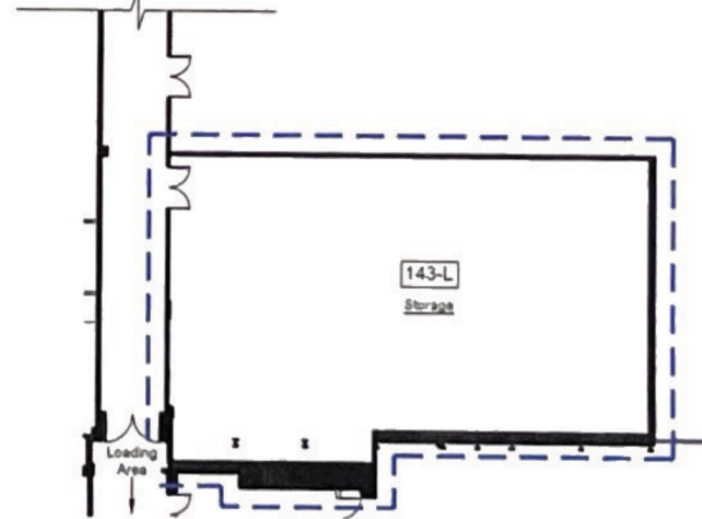
FINAL PLAN

(SIGNATURE)

DATE



Second Floor Plan
Suites 244-G, and 250-G

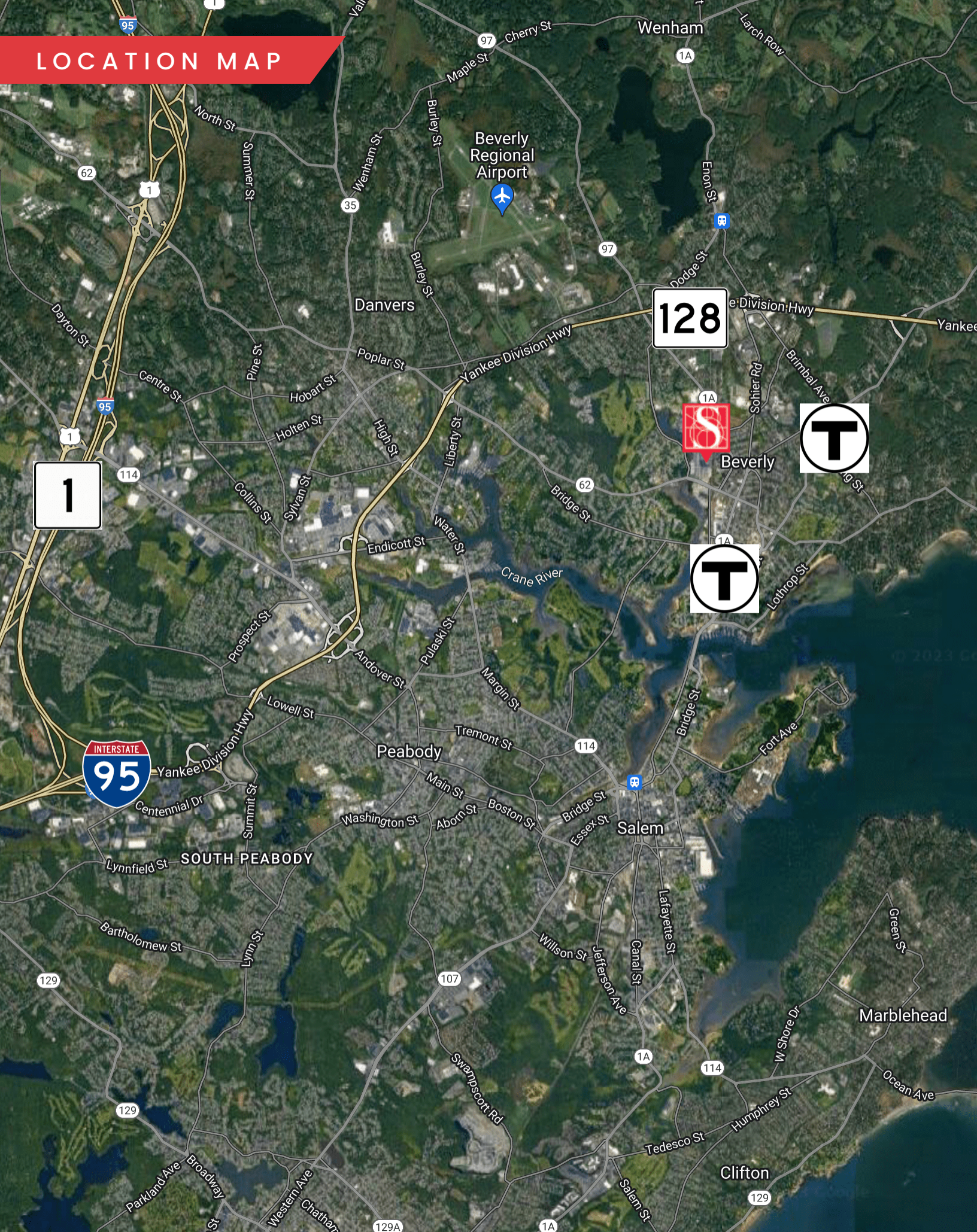


First Floor Plan, Continued
Suite 143-L

ADDITIONAL PHOTOS



LOCATION MAP



100 CUMMINGS CENTER

BEVERLY, MA

20,464 SF | FLEX SPACE FOR SUBLEASE

DAVID STUBBLEBINE
617.592.3391
david@stubblebinecompany.com

DANNY CRUZ
978.305.0473
danny@stubblebinecompany.com

We obtained the information above from sources we believe to be reliable. However, we have not verified its accuracy and make no guarantee, warranty or representation about it. It is submitted subject to the possibility of errors, omissions, change of price, rental or other conditions, prior sale, lease or financing, or withdrawal without notice. We include projections, opinions, assumptions or estimates for example only, and they may not represent current or future performance of the property. You and your tax and legal advisors should conduct your own investigation of the property and transaction.



THE
STUBBLEBINE
COMPANY

CORFAC INTERNATIONAL