

84 TURNPIKE ROAD

CHELMSFORD, MA



FOR SALE



9,780 SF

INDUSTRIAL BUILDING FOR
SALE ON .72 ACRES

CONTACT:
MICAH STUBBLEBINE 978.265.8101 MICAH@STUBBLEBINECOMPANY.COM

EXCLUSIVE OFFERING



THE
STUBBLEBINE
COMPANY

CORFAC INTERNATIONAL

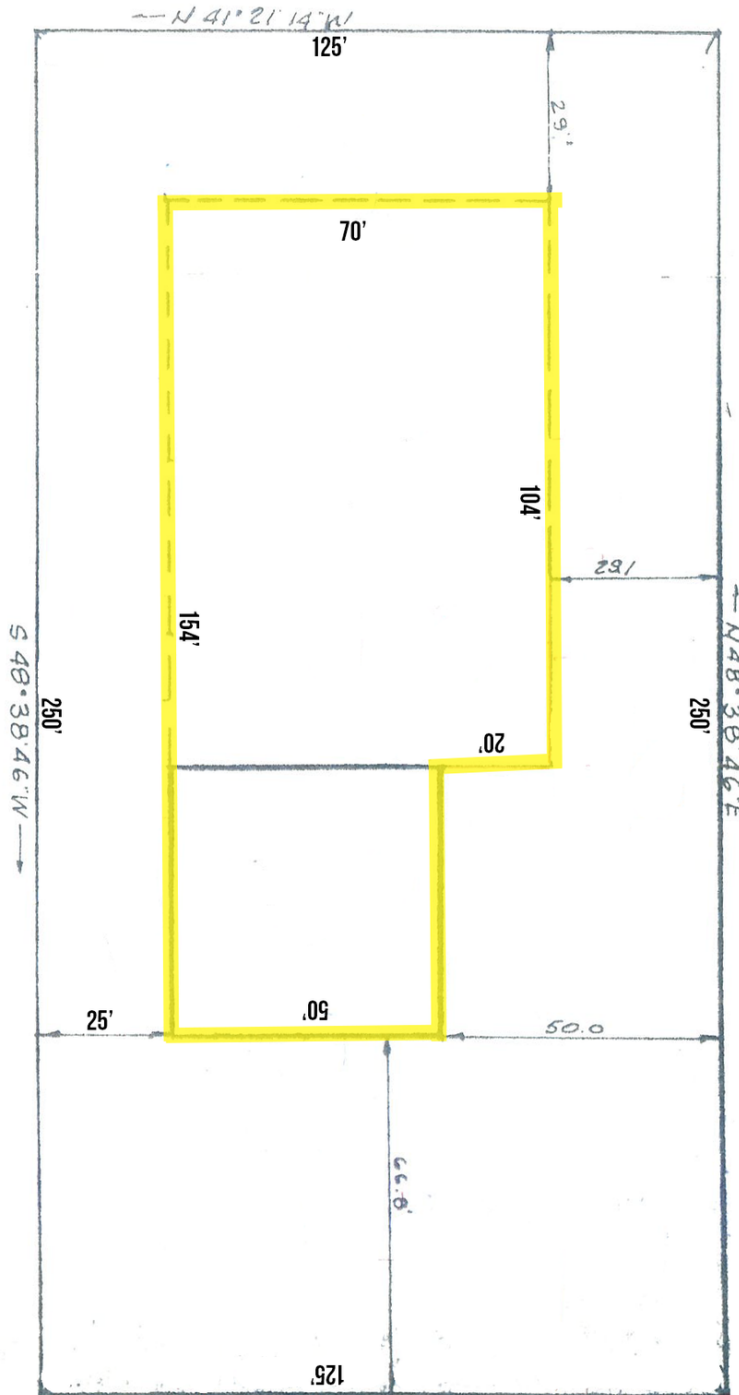
PROPERTY SUMMARY



PROPERTY SPECIFICATIONS

BUILDING SIZE:	9,780 SF	HEATING:	Gas
OFFICE SIZE	1,240 SF	POWER:	1200 Amps
LAND AREA:	.72 Acres	WATER & SEWER:	City
YEAR BUILT:	1961	ROOF:	Rubber Membrane (2012) and Tar and Gravel
CONSTRUCTION:	Single Story Masonry Building	TAXES:	\$1.02/SF (FY 2022)
CEILING HEIGHT:	14'-18' Clear	CRANES:	Three (3) cranes; 3 ton, 5 ton and 7.5 ton
LOADING:	Two (2) grade-level doors One (1) additional grade-level door on the side of building to be installed by seller	SALE PRICE:	\$2,100,000
ZONING:	IA		

SITE PLAN



TURNPIKE ROAD



THE
STUBBLEBINE
COMPANY

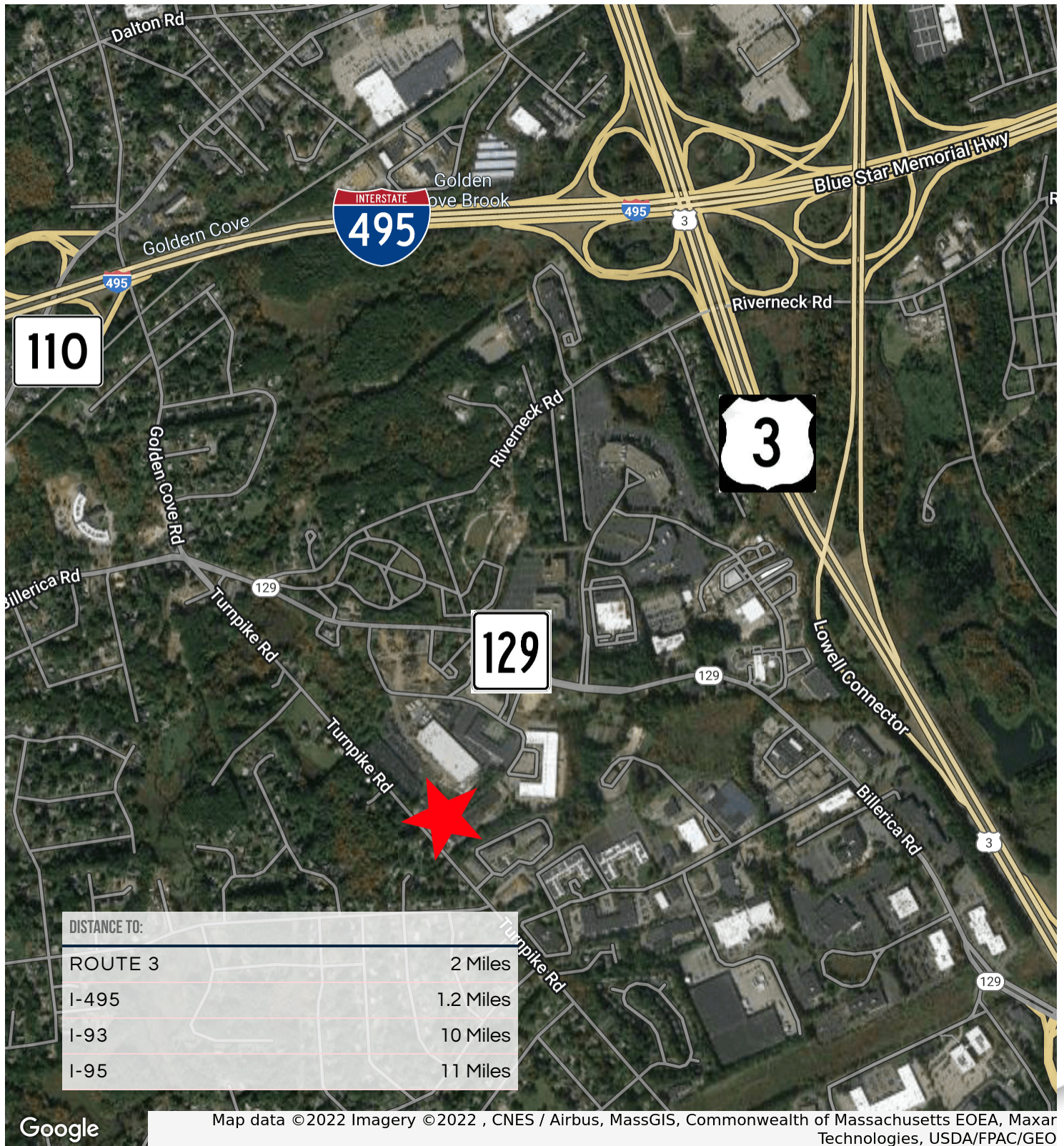
CORFAC INTERNATIONAL

THE STUBBLEBINE COMPANY
ONE CRANBERRY HILL | LEXINGTON, MA
STUBBLEBINECOMPANY.COM

ADDITIONAL PHOTOS



LOCATION MAP



84 TURNPIKE ROAD

CHELMSFORD, MA



CONTACT:
MICAH STUBBLEBINE 978.265.8101 MICAH@STUBBLEBINECOMPANY.COM

EXCLUSIVE OFFERING



THE
STUBBLEBINE
COMPANY

CORFAC INTERNATIONAL