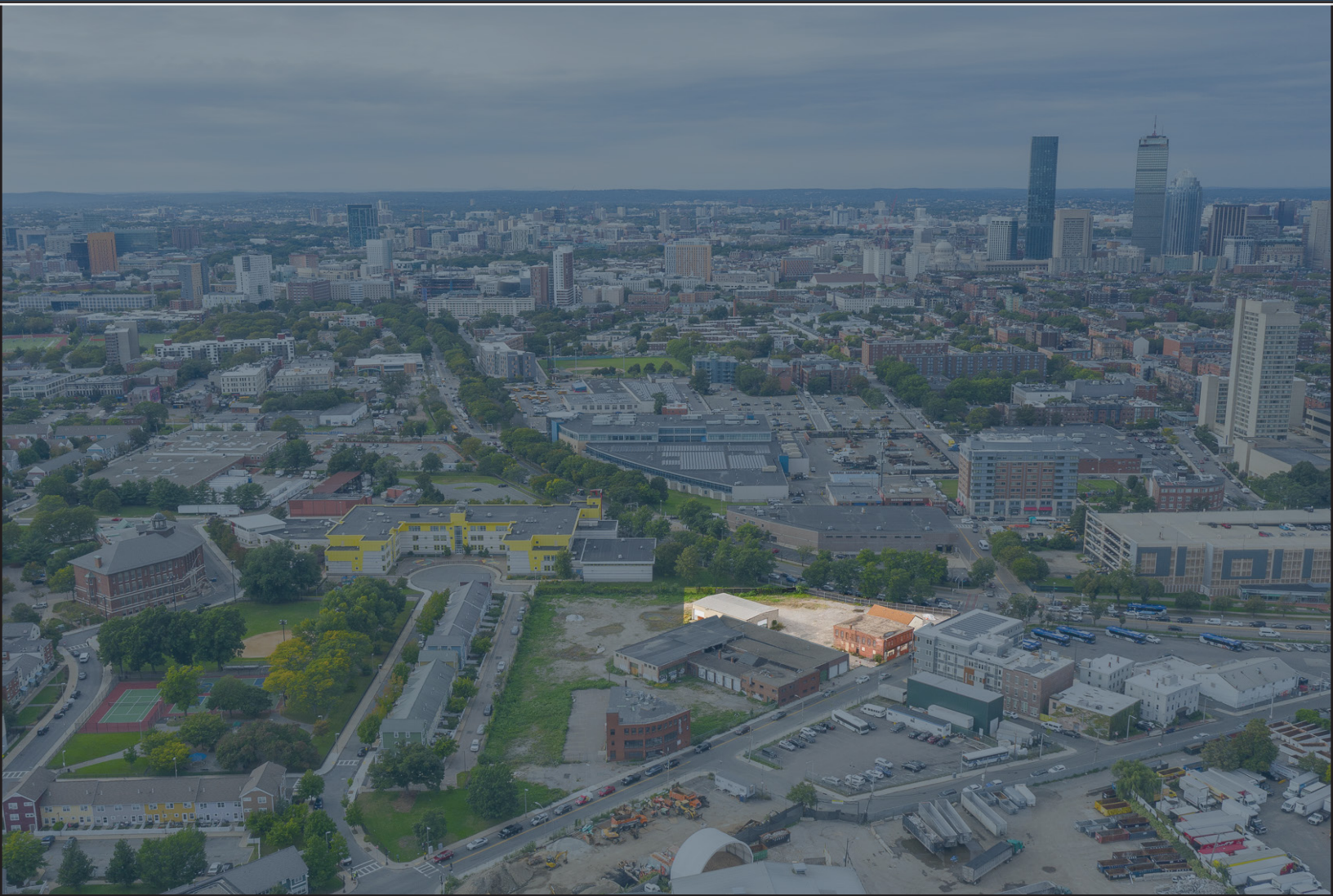


55
Hampden Street
BOSTON, MA

REDEVELOPMENT
LAND FOR SALE



THE
STUBBLEBINE
COMPANY

CORFAC INTERNATIONAL



FOR MORE INFORMATION, PLEASE CONTACT:

David Skinner 617.999.0057

David Stubblebine 617.592.3391

James Stubblebine 617.592.3388



**THE
STUBBLEBINE
COMPANY**

CORFAC INTERNATIONAL

CONTENTS

THE OFFERING 4

SITE & BUILDING PLANS 6

LOCATION OVERVIEW 10

55 Hampden Street is located 0.6 miles to I-93 and 2 miles from I-90, an unparalleled location with regard to access to the most traveled interstates in New England. Located within a short distance from Boston’s historic South End, financial district, and the exploding Seaport.

THE OFFERING

As the exclusive agent, The Stubblebine / CORFAC International is pleased to present 55 Hampden Street in Boston, Massachusetts to the marketplace for sale. The 1.27 acres allows for development of approximately 110,000 SF by right and flexible zoning.

PROPERTY SUMMARY

ADDRESS	55 Hampden Street
LOT SIZE	55,398 sf
FAR	2.0
ZONING	Commercial





Hampden Street

Melnea Cass Blvd



Melnea Cass Blvd

Hampden Street



THE
STUBBLEBINE
COMPANY

CORFAC INTERNATIONAL

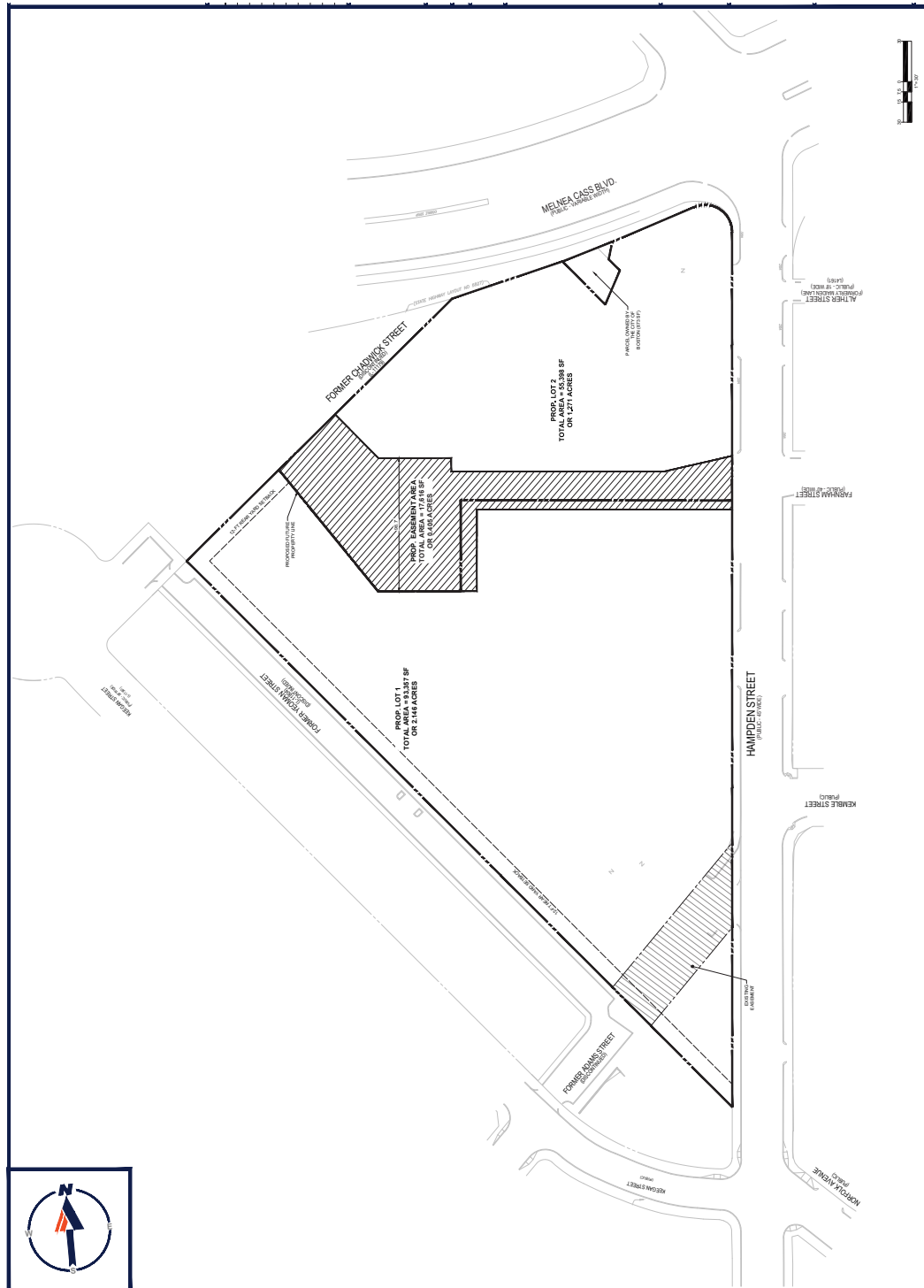


SITE & BUILDING PLANS



SITE PLANS

SITE OUTLINE





THE
STUBBLEBINE
COMPANY

CORFAC INTERNATIONAL



LOCATION OVERVIEW



BOSTON MARKET HIGHLIGHTS

Suffolk County is a county in Massachusetts and consists of 22 cities. The county seat is Boston, the state capital and the largest city in Massachusetts. Realtor.com's September 2021 report shows that the median list price of homes in Suffolk County, Massachusetts was \$775K, flat year-over-year. The median listing price per square foot was \$646.

Improving consumer sentiment, rising employment levels, and historically low interest rates are paving the way for real estate to thrive in Boston over the course of 2021, and real estate investors who listen to market trends could find themselves in a good position to take advantage of long-term secular trends.

AREA HIGHLIGHTS

TUFTS UNIVERSITY

Tufts University is a private research university on the border of Medford and Somerville, Massachusetts. It was founded in 1852 as Tufts College by Christian universalists who sought to open a nonsectarian institution of higher learning. It was a small New England liberal arts college until its transformation into a larger research university in the 1970s, though its corporate name is still "The Trustees of Tufts College". Tufts emphasizes active citizenship and public service in all its disciplines, and is known for its internationalism and study abroad programs.

BOSTON MEDICAL CENTER

Boston Medical Center has a long tradition of providing accessible and exceptional care for everyone who comes through our doors. In addition to this commitment, our robust research and teaching programs keep our hospital on the cutting-edge, while pushing medical care into the future. Boston Medical Center Health System is an approximately \$4B integrated health care system whose mission is providing exceptional care without exception. The system consists of five major entities:

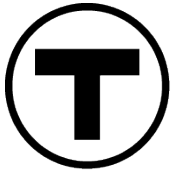
- Boston Medical Center – A tertiary academic medical center
- Boston Medical HealthNet Plan – a Medicaid Managed Care Organization
- Boston University Medical Group
- Boston HealthNet – A network of community health centers
- Boston Accountable Care Organization

BOSTON UNIVERSITY MEDICAL CAMPUS

Boston University Medical Campus (BUMC), located in the historic South End of Boston, comprises the School of Medicine, School of Public Health, Henry M. Goldman School of Dental Medicine, and BUSM's Graduate Medical Sciences. The Campus includes Boston Medical Center, the primary teaching affiliate of the School of Medicine, and the Solomon Carter Fuller Mental Health Center, a state mental health facility.

Renowned for the quality of teaching and research and for service to the community, these schools provide education and training in the most current thinking and techniques in their fields, with a particular focus on disadvantaged, underserved, and indigent populations. Together, the schools employ more than 2,900 full-and part-time, affiliate and volunteer faculty members, many of whom are leading experts in their fields, and train a diverse group of nearly 3,800 full-and part-time students. The district was added to the National Register of Historic Places in 1975.

TRANSIT MAP



Massachusetts Bay Transportation Authority

RECENT DEVELOPMENTS



EXCHANGE SOUTH END

Exchange South End is a unique 1.6 million SF opportunity designed to connect your company to a uniquely diverse, talented and culture-rich neighborhood. It is a next-generation life science and technology urban campus unmatched in Boston or the region.



SOUTH BAY CENTER

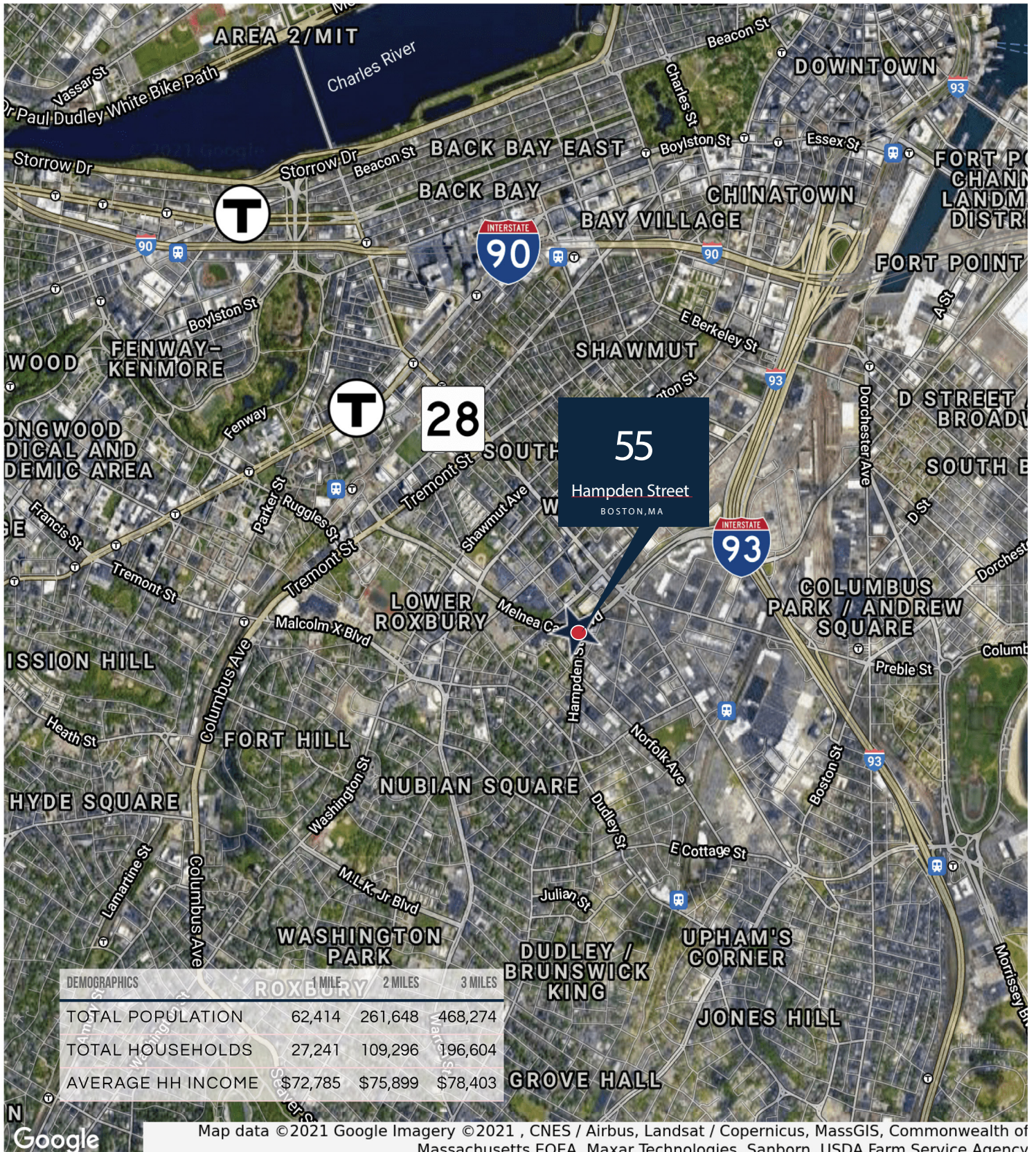
EDENS carefully undertook the planning of the first mixed-use community gathering place in Dorchester by closely partnering with local civic organizations and artisans to ensure South Bay was designed in a manner that the community would be proud to call their own. South Bay is committed to improving the neighborhood's legacy for generations to come.



840 COLUMBUS AVE.

This project consists of a 25-story, approximately 468,500 sf mixed-use building containing a five-story podium of academic/office space, and approximately 810 student beds on the remaining 20 stories.

REGIONAL MAP



CONFIDENTIALITY & DISCLAIMER

CONFIDENTIALITY & DISCLAIMER All materials and information received or derived from The Stubblebine Company/CORFAC International, its directors, officers, agents, advisors, affiliates and/or any third party sources are provided without representation or warranty as to completeness, veracity, or accuracy, condition of the property, compliance or lack of compliance with applicable governmental requirements, developability or suitability, financial performance of the property, projected financial performance of the property for any party's intended use or any and all other matters. Neither The Stubblebine Company/CORFAC International, its directors, officers, agents, advisors, or affiliates makes any representation or warranty, express or implied, as to accuracy or completeness of the any materials or information provided, derived, or received. Materials and information from any source, whether written or verbal, that may be furnished for review are not a substitute for a party's active conduct of its own due diligence to determine these and other matters of significance to such party. The Stubblebine Company/CORFAC International will not investigate or verify any such matters or conduct due diligence for a party unless otherwise agreed in writing. EACH PARTY SHALL CONDUCT ITS OWN INDEPENDENT INVESTIGATION AND DUE DILIGENCE. Any party contemplating or under contract or in escrow for a transaction is urged to verify all information and to conduct their own inspections and investigations including through appropriate third-party independent professionals selected by such party. All financial data should be verified by the party including by obtaining and reading applicable documents and reports and consulting appropriate independent professionals. The Stubblebine Company/CORFAC International makes no warranties and/or representations regarding the veracity, completeness, or relevance of any financial data or assumptions. The Stubblebine Company/CORFAC International does not serve as a financial advisor to any party regarding any proposed transaction. All data and assumptions regarding financial performance, including that used for financial modeling purposes, may differ from actual data or performance. Any estimates of market rents and/or projected rents that may be provided to a party do not necessarily mean that rents can be established at or increased to that level. Parties must evaluate any applicable contractual and governmental limitations as well as market conditions, vacancy factors and other issues in order to determine rents from or for the property. Legal questions should be discussed by the party with an attorney. Tax questions should be discussed by the party with a certified public accountant or tax attorney. Title questions should be discussed by the party with a title officer or attorney. Questions regarding the condition of the property and whether the property complies with applicable governmental requirements should be discussed by the party with appropriate engineers, architects, contractors, other consultants and governmental agencies. All properties and services are marketed by The Stubblebine Company/CORFAC International in compliance with all applicable fair housing and equal opportunity laws.

**FOR MORE INFORMATION,
PLEASE CONTACT:**

David Skinner
Senior Advisor
617.999.0057

David Stubblebine
Principal
617.592.3391

James Stubblebine
Principal
617.592.3388

Valentina Girouard
Advisor
781-552-0723



THE
STUBBLEBINE
COMPANY

CORFAC INTERNATIONAL



THE
STUBBLEBINE
COMPANY

CORFAC INTERNATIONAL