

# 49 N. MAIN STREET

WESTFORD, MA



## 68 ACRES

FOR SALE: SINGLE FAMILY  
DEVELOPMENT

CONTACT:  
DAVID SKINNER 617.999.0057 DSKINNER@STUBBLEBINECOMPANY.COM

EXCLUSIVE OFFERING



THE  
STUBBLEBINE  
COMPANY

CORFAC INTERNATIONAL

## PROPERTY SUMMARY



### PROPERTY DESCRIPTION

68 Acres For Sale: Single Family Development

### PROPERTY HIGHLIGHTS

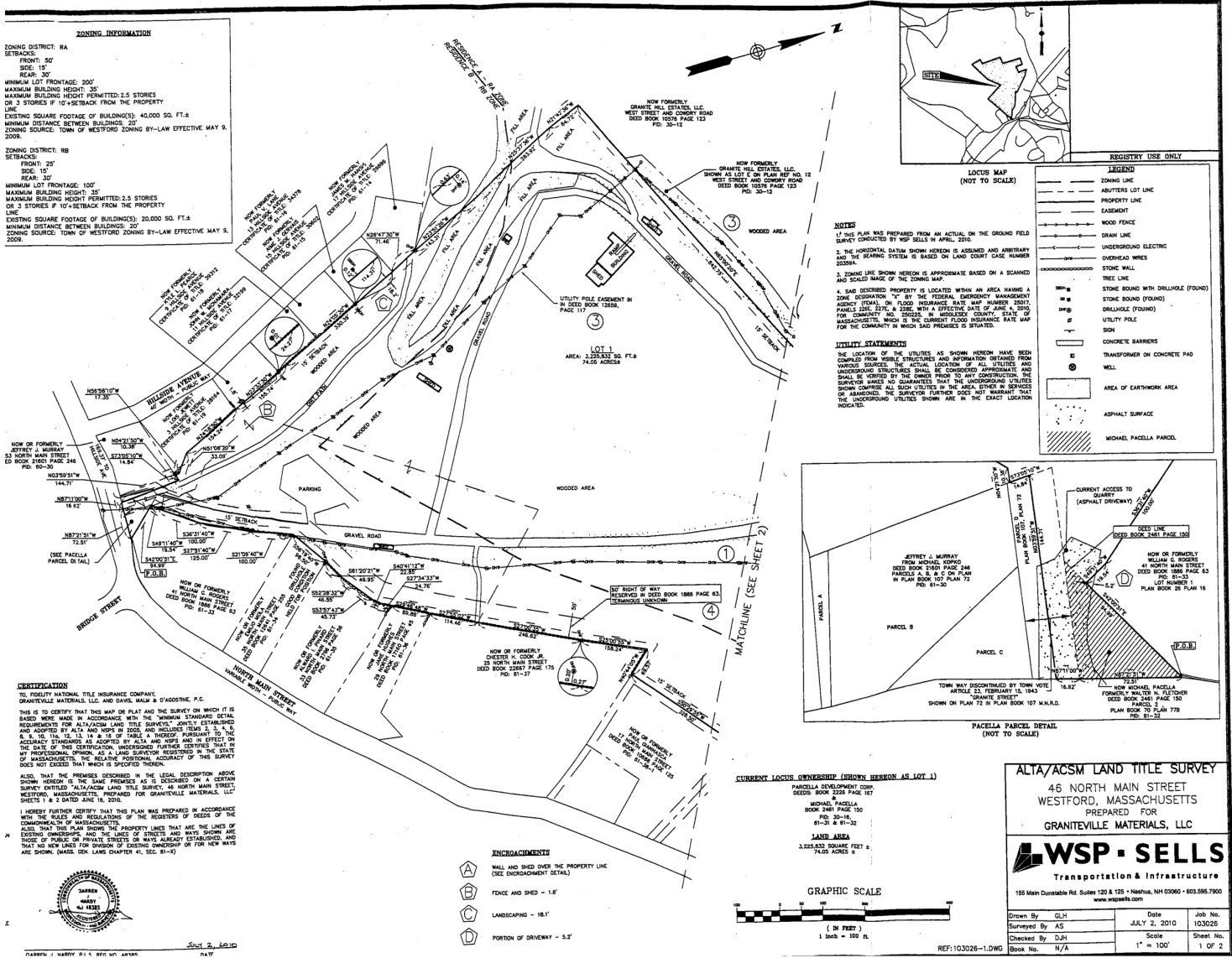
- Zoned single family residential
- 2.9 miles to I-495
- 3.9 miles to "The Point" in Littleton, MA
- 4.8 miles to Route 3
- Currently operated as a quarry
- Approx. 65,000,000 tons of material on site
- Approx. \$500,000 of equipment included with sale

### OFFERING SUMMARY

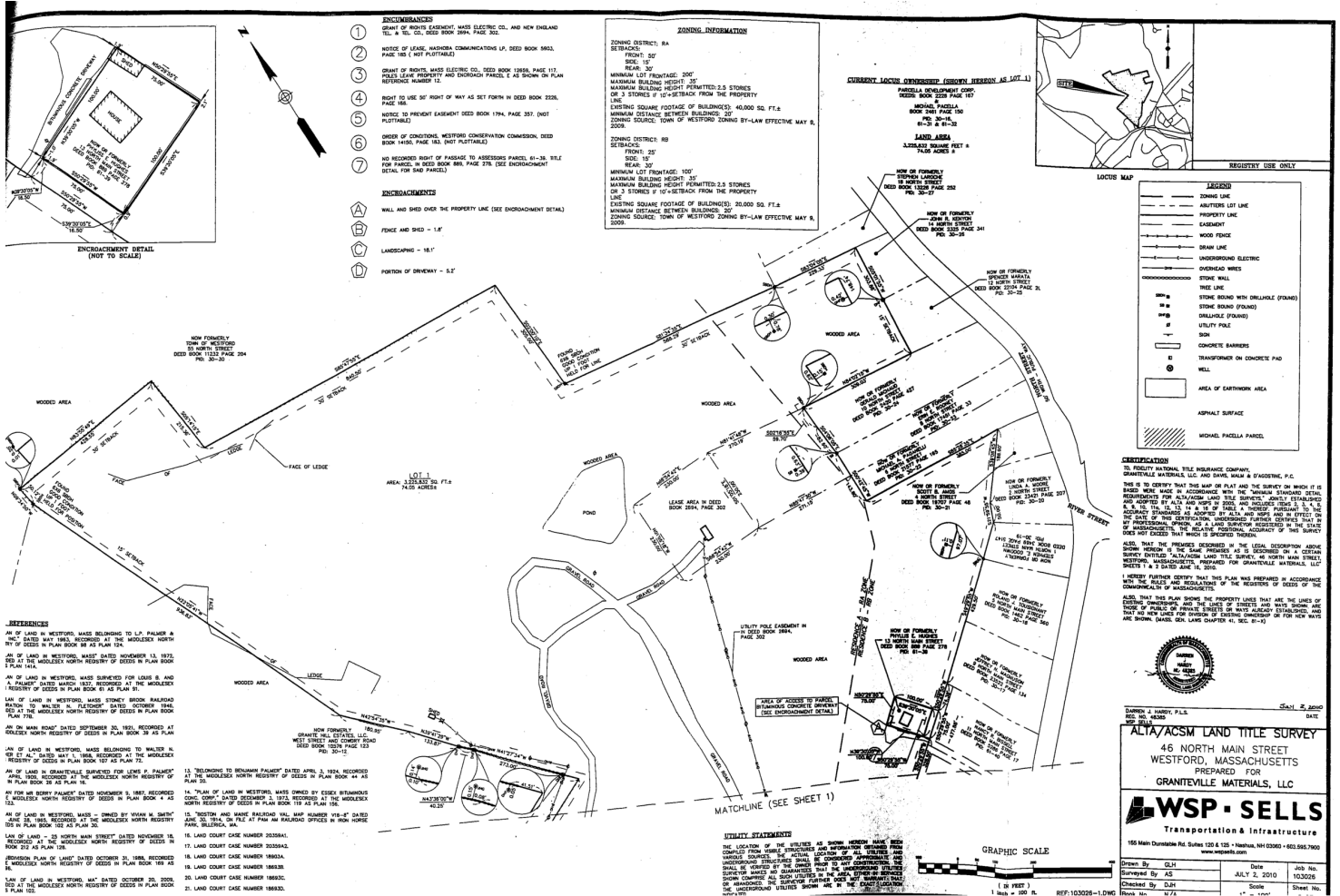
SALE PRICE:	Subject To Offer
LOT SIZE:	68 Acres

DEMOGRAPHICS	5 MILES	10 MILES
TOTAL HOUSEHOLDS	15,272	96,433
TOTAL POPULATION	44,551	260,949
AVERAGE HH INCOME	\$132,045	\$106,603

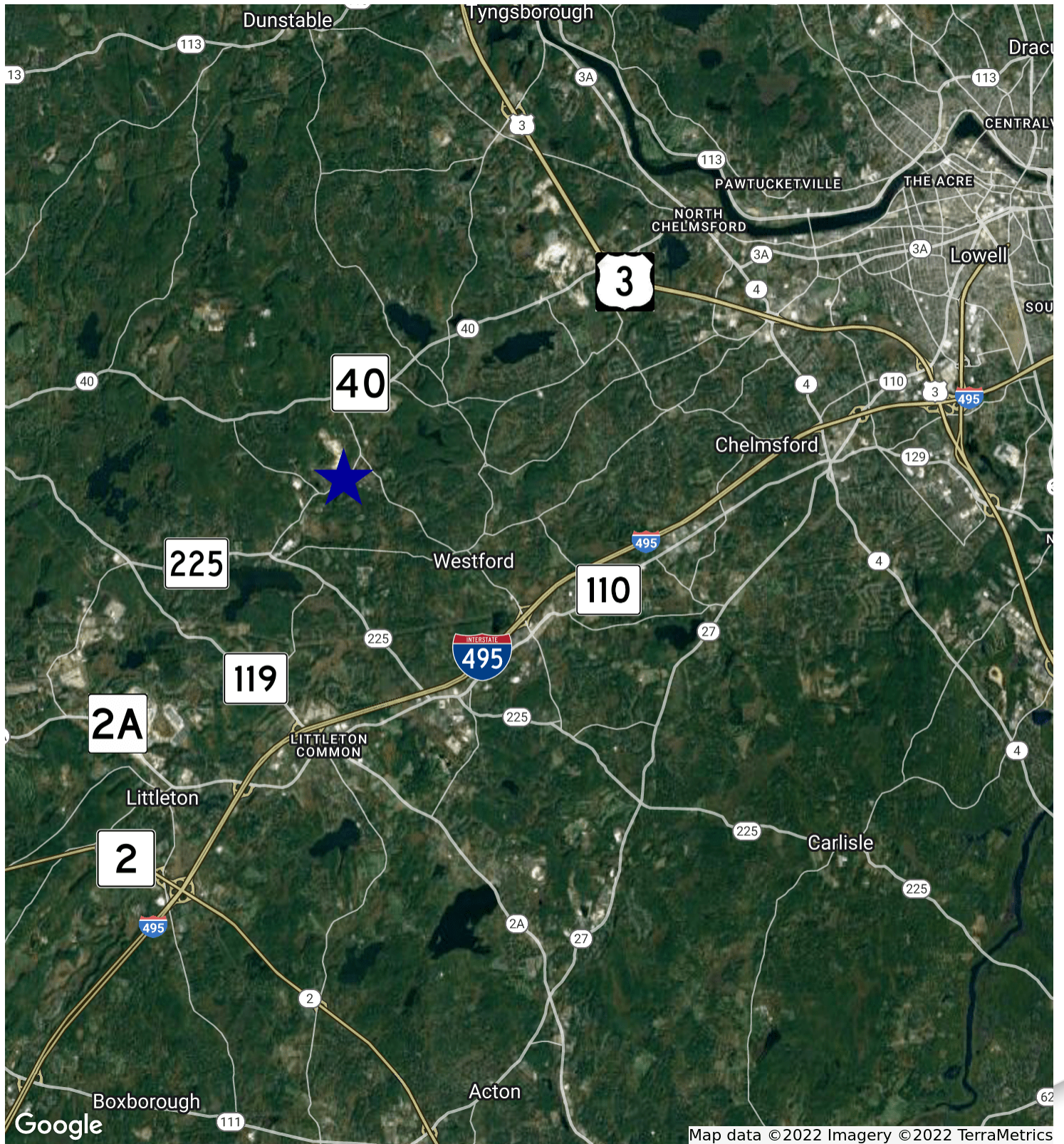
SITE PLANS



SITE PLANS



## LOCATION MAP



# 49 N. MAIN STREET

WESTFORD, MA



CONTACT:  
DAVID SKINNER 617.999.0057 DSKINNER@STUBBLEBINECOMPANY.COM

EXCLUSIVE OFFERING  
 THE  
STUBBLEBINE  
COMPANY

CORFAC INTERNATIONAL