

THERESE ROAD

SALEM, NH



9.75 ACRES

CONSISTING OF TWO PARCELS
OF RESIDENTIAL LAND FOR
SALE

CONTACT:

VALENTINA GIROUARD 781.552.0723
JAMES STUBBLEBINE 617.592.3388
HARRISON PIPER 617.901.2397
DAVID STUBBLEBINE 617.592.3391

VALENTINA@STUBBLEBINECOMPANY.COM
JAMES@STUBBLEBINECOMPANY.COM
HARRISON@STUBBLEBINECOMPANY.COM
DAVID@STUBBLEBINECOMPANY.COM

EXCLUSIVE OFFERING



THE
STUBBLEBINE
COMPANY

CORFAC INTERNATIONAL

PROPERTY SUMMARY



PROPERTY DESCRIPTION

9.75 Acres consisting of two parcels of residential land for sale

PROPERTY HIGHLIGHTS

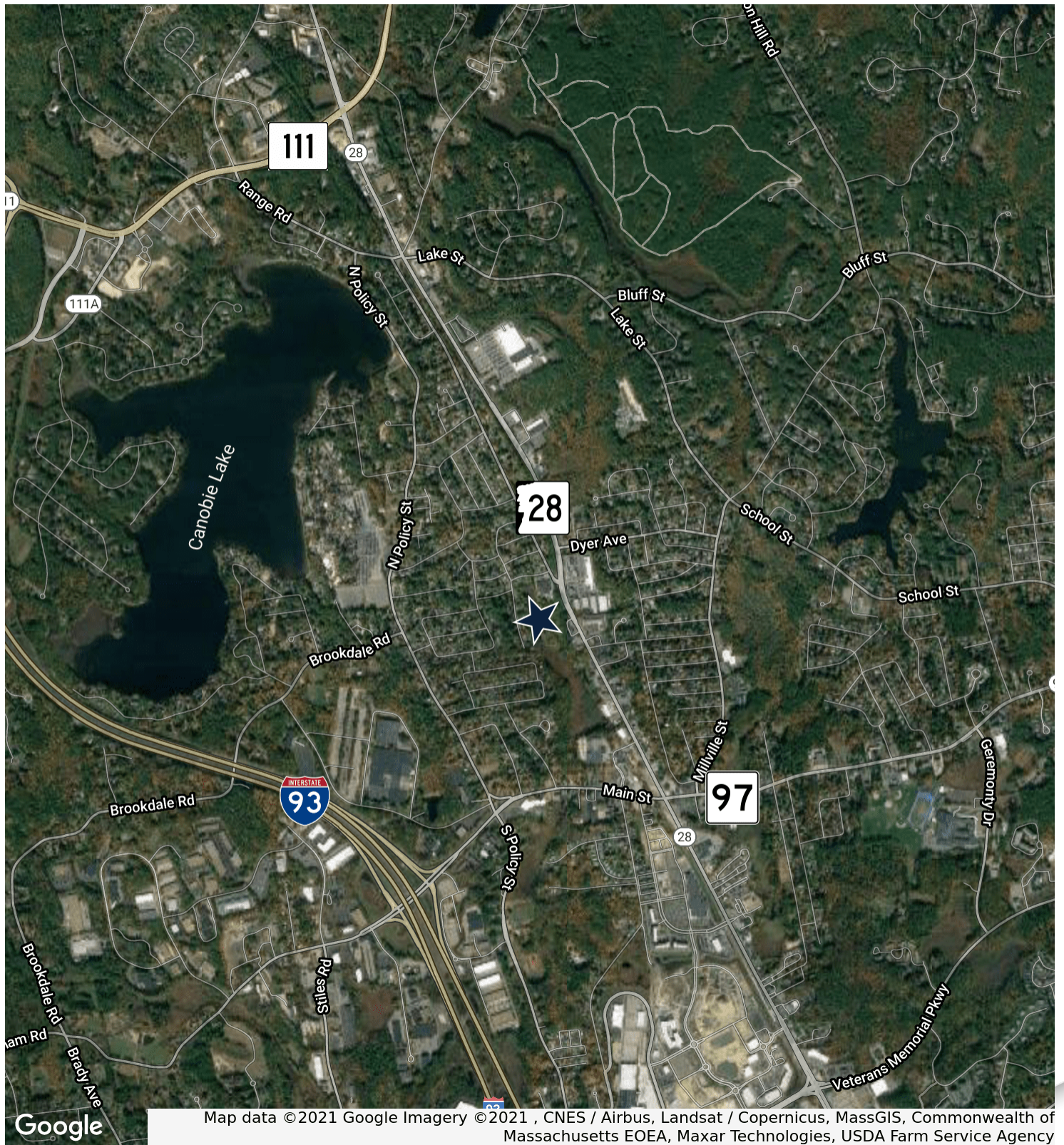
- Location with easy access to Route 93
- Located just 4 miles from Haverhill, MA

OFFERING SUMMARY

LOT SIZE:	9.75 Acres
PARCEL 1:	7.5 Acres
PARCEL 2:	2.25 Acres
ZONING:	RES
SALES PRICE:	Market

DEMOGRAPHICS	5 MILES	10 MILES
TOTAL HOUSEHOLDS	25,629	144,884
TOTAL POPULATION	68,982	394,731
AVERAGE HH INCOME	\$94,169	\$78,401

LOCATION MAP



Map data ©2021 Google Imagery ©2021, CNES / Airbus, Landsat / Copernicus, MassGIS, Commonwealth of Massachusetts EOE, Maxar Technologies, USDA Farm Service Agency

THERESE ROAD

SALEM, NH



CONTACT:

VALENTINA GIROUARD
JAMES STUBBLEBINE
HARRISON PIPER
DAVID STUBBLEBINE

781.552.0723
617.592.3388
617.901.2397
617.592.3391

VALENTINA@STUBBLEBINECOMPANY.COM
JAMES@STUBBLEBINECOMPANY.COM
HARRISON@STUBBLEBINECOMPANY.COM
DAVID@STUBBLEBINECOMPANY.COM

EXCLUSIVE OFFERING



THE
STUBBLEBINE
COMPANY

CORFAC INTERNATIONAL