

429 GREAT ROAD

ACTON, MA



10,542 SF

AUTOMOTIVE/AUTOBODY/RETAIL
SPACE FOR LEASE

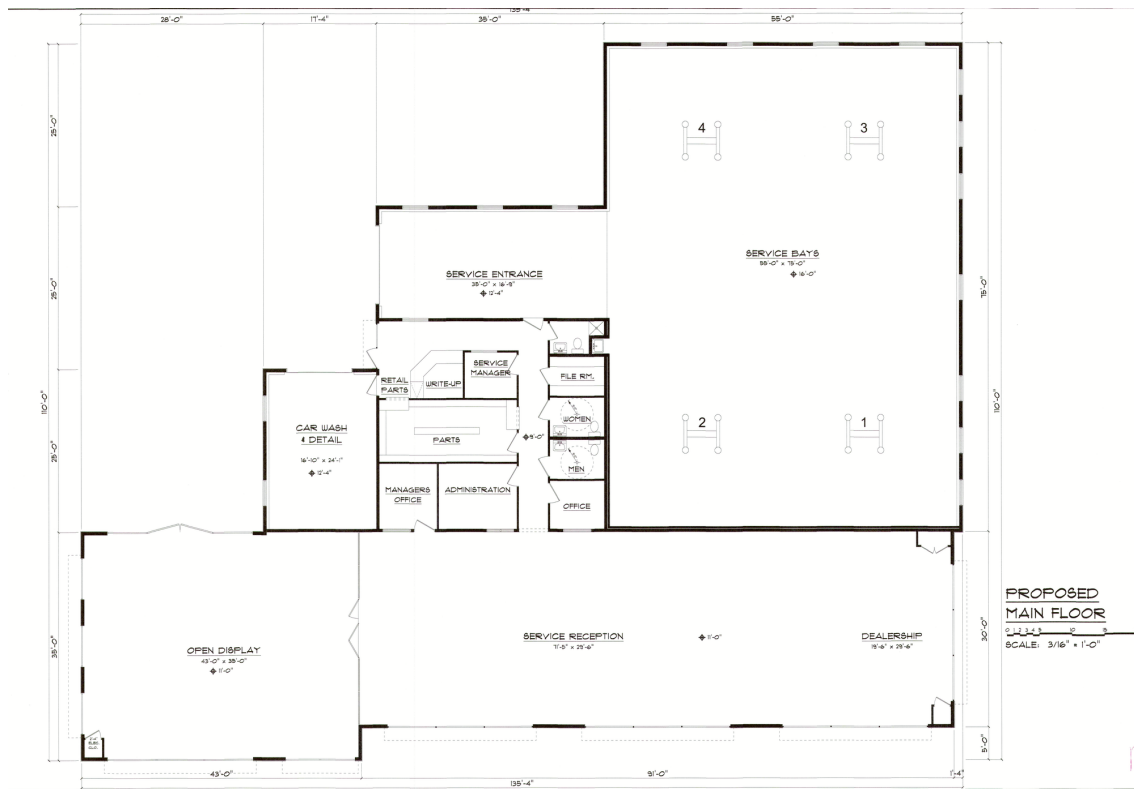
EXCLUSIVE OFFERING



THE
STUBBLEBINE
COMPANY

CORFAC INTERNATIONAL

PROPERTY SUMMARY



PROPERTY DESCRIPTION

10,542 SF AUTOMOTIVE/RETAIL SPACE FOR LEASE

PROPERTY HIGHLIGHTS

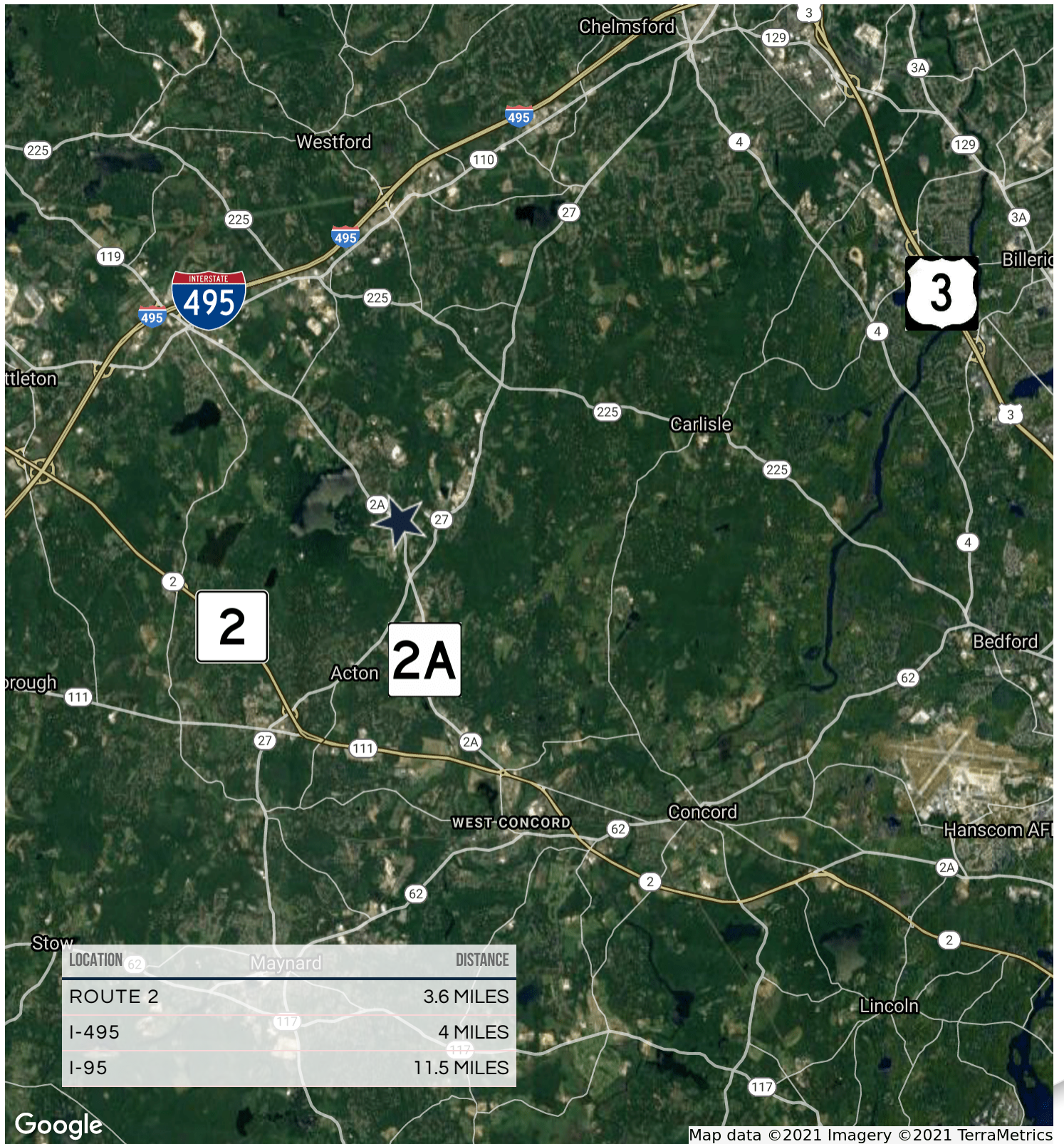
- NEW CONSTRUCTION
- EIGHT (8) SERVICE BAYS
- CLOSE PROXIMITY TO I-495 AND ROUTE 2
- 250' FRONTAGE ON GREAT ROAD

PROPERTY SPECIFICATIONS

BUILDING SIZE	10,542 SF
SPACE AVAILABLE	10,542 SF
LAND AREA	1.16 ACRES
ZONING	LIMITED BUSINESS (LB)
YEAR BUILT	2019
CEILING HEIGHT	12'-16' CLEAR
AVAILABLE AMPS	3: 200 AMP, 3 PHASE SERVICES
DRIVE-IN DOORS	TWO (2)
SPRINKLER	WET SYSTEM
WATER/SEWER	TOWN/SEPTIC
HVAC AVAILABLE	HEAT AND AC
HEAT	GAS
PARKING	16 SPACES

DEMOGRAPHICS	1 MILE	3 MILES	5 MILES
TOTAL HOUSEHOLDS	1,146	7,425	20,138
TOTAL POPULATION	3,006	20,449	57,265
AVERAGE HH INCOME	\$123,791	\$131,761	\$141,701

LOCATION MAPS



429 GREAT ROAD

ACTON, MA



CONTACT:
CHRIS MICHNIEWICZ | 774.994.1698

EXCLUSIVE OFFERING



THE
STUBBLEBINE
COMPANY

CORFAC INTERNATIONAL