

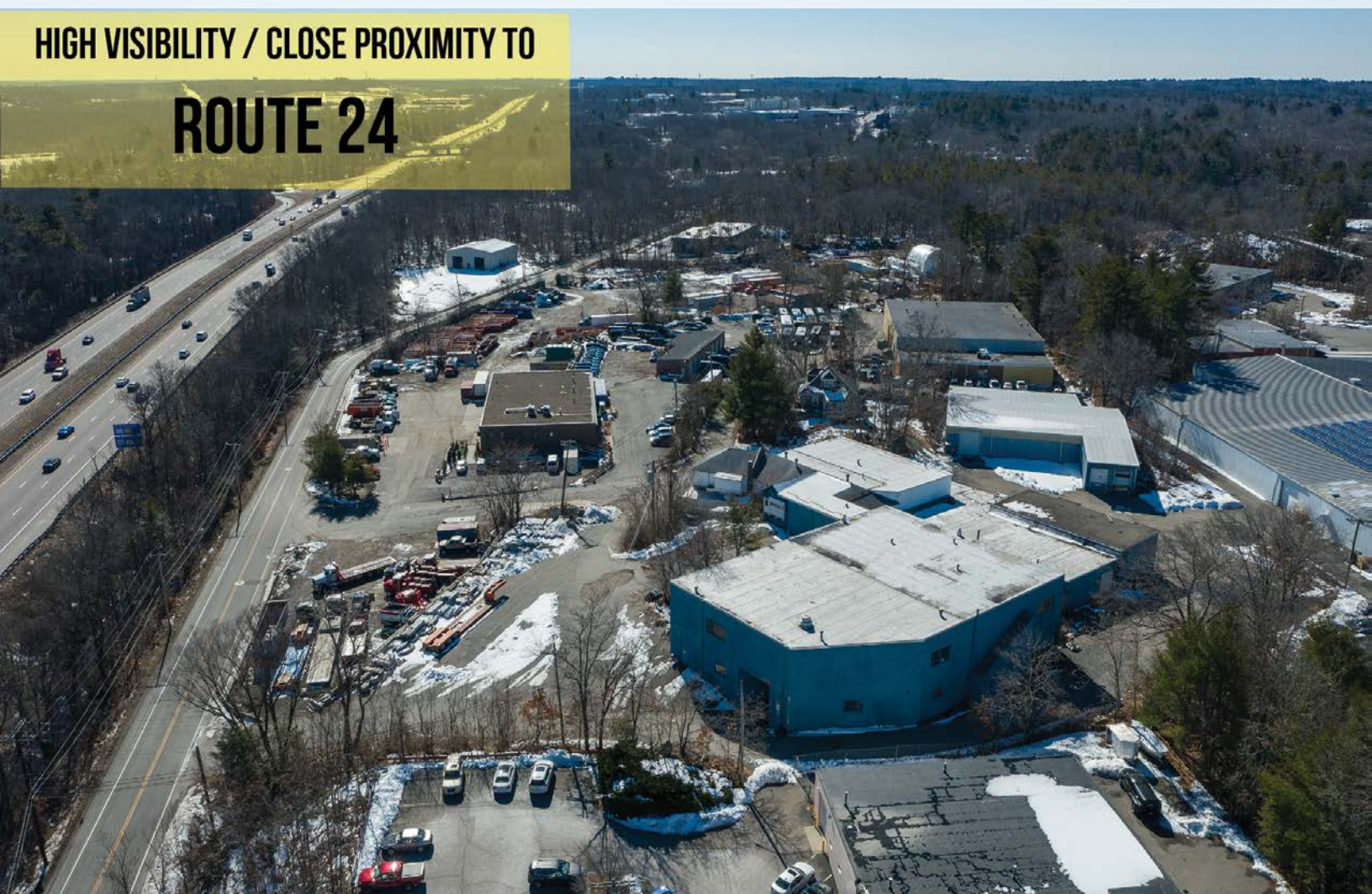
15 MARSHALL STREET

CANTON, MA



HIGH VISIBILITY / CLOSE PROXIMITY TO

ROUTE 24



55,860 SF

INDUSTRIAL PROPERTY
FOR SALE

- 2.5 PAVED ACRES
- EXCELLENT ROUTE 24 VISIBILITY
- LOCATED ONE MILE FROM ROUTE 24

EXCLUSIVE OFFERING



THE
STUBBLEBINE
COMPANY

CORFAC INTERNATIONAL

PROPERTY SUMMARY



PROPERTY DESCRIPTION

55,860 +/- SF INDUSTRIAL PROPERTY FOR SALE

PROPERTY HIGHLIGHTS

- 2.5 PAVED ACRES
- EXCELLENT ROUTE 24 VISIBILITY
- LOCATED ONE MILE FROM ROUTE 24

PROPERTY DESCRIPTION

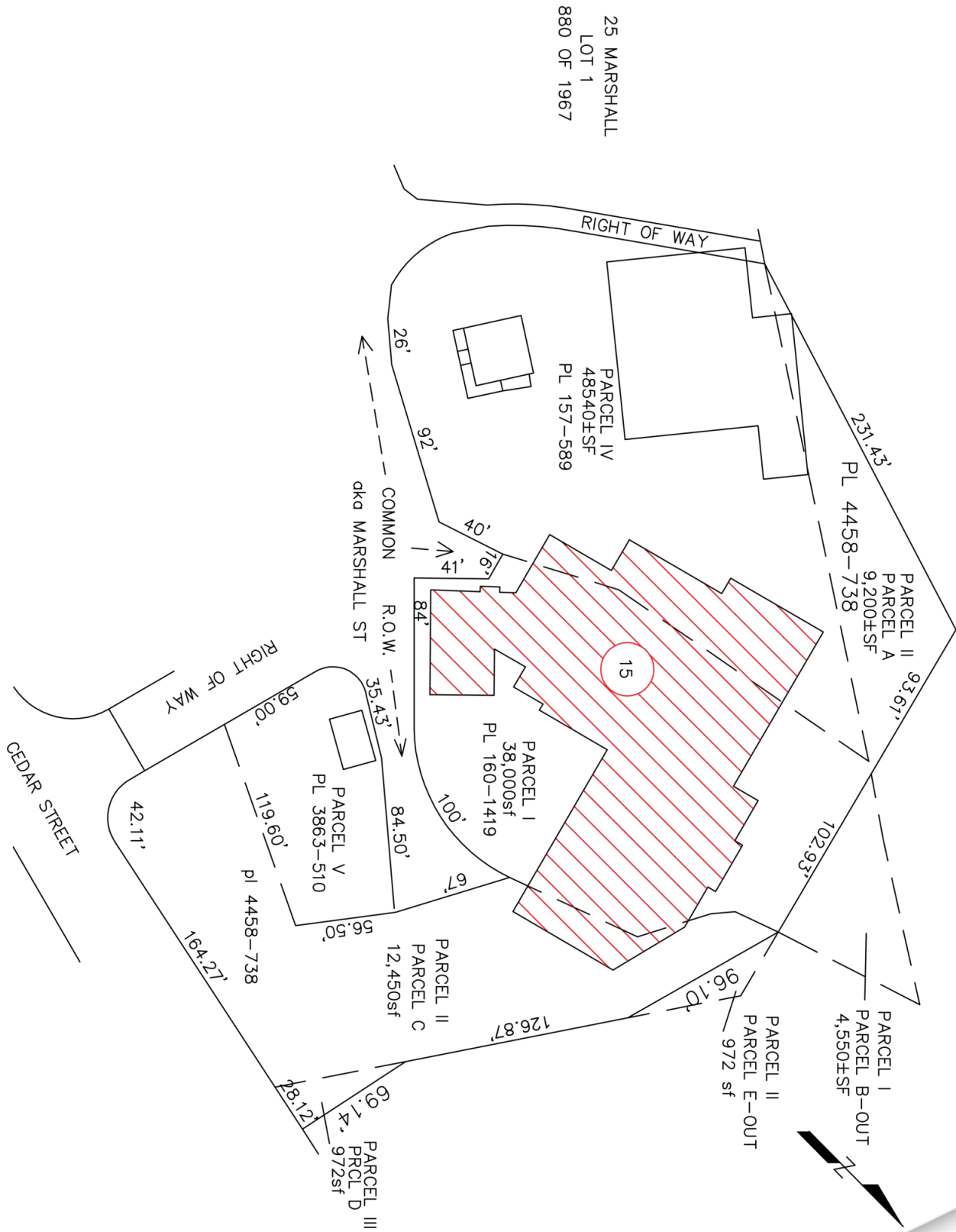
LOT SIZE:	2.5 Acres
BUILDING SIZE:	44,022 SF Manufacturing 10,750 SF Warehouse 1,089 SF 2 Bedroom Home
ZONING:	Commercial
SALES PRICE:	Market

DEMOGRAPHICS	3 MILES	5 MILES	10 MILES
TOTAL HOUSEHOLDS		52,583	332,149
TOTAL POPULATION		136,377	872,659
AVERAGE HH INCOME		\$82,372	\$78,596

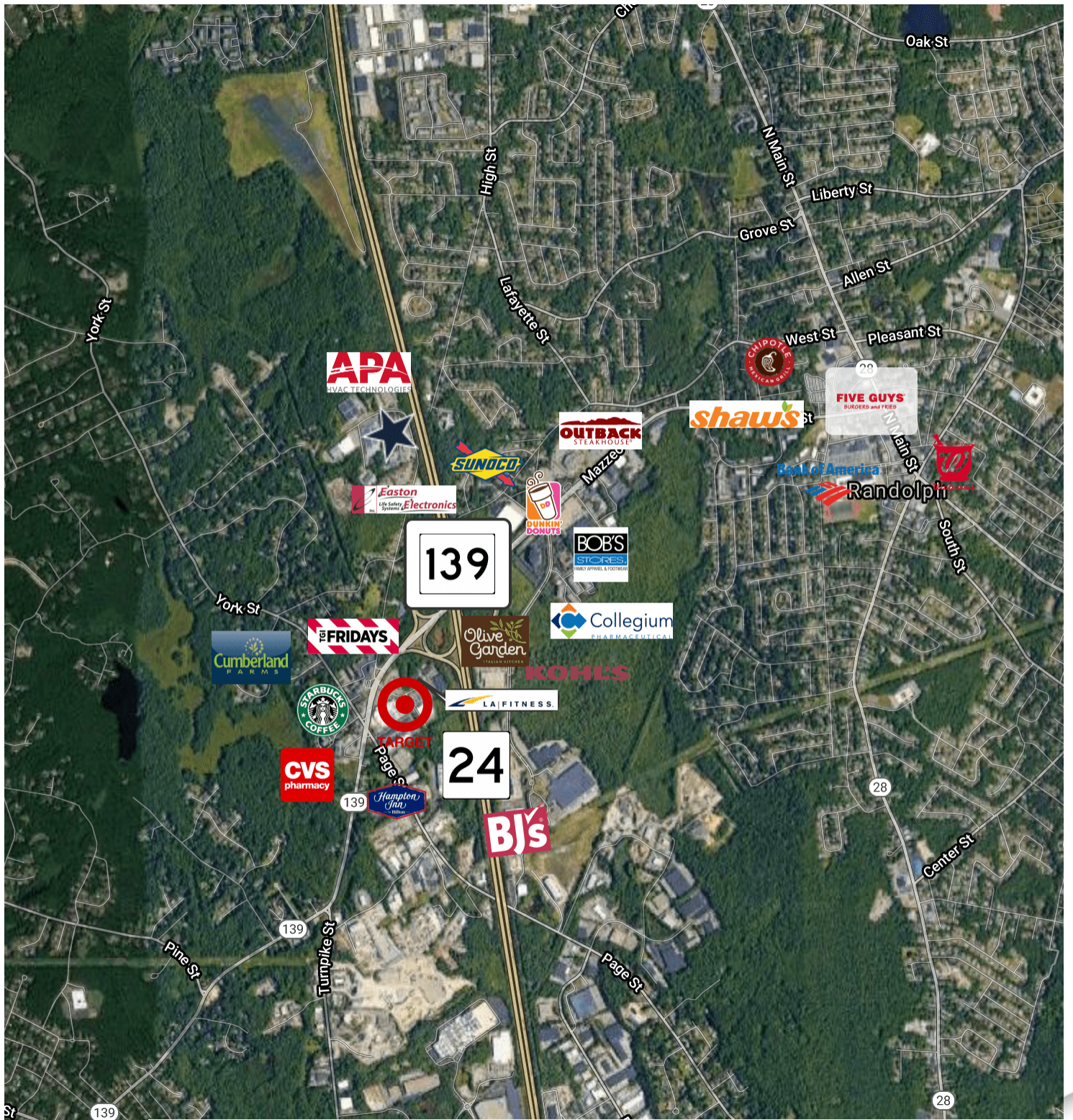
ADDITIONAL PHOTOS



SITE PLANS



LOCATION MAP



Map data ©2021 Imagery ©2021 , CNES / Airbus, Landsat / Copernicus, MassGIS, Commonwealth of Massachusetts EOE, Maxar Technologies, USDA Farm Service Agency

15 MARSHALL STREET

CANTON, MA



CONTACT:

CHRIS MICHNIEWICZ 774.994.1698
DAVID STUBBLEBINE 617.592.3391
JAMES STUBBLEBINE 617.592.3388

CHRIS@STUBBLEBINECOMPANY.COM
DAVID@STUBBLEBINECOMPANY.COM
JAMES@STUBBLEBINECOMPANY.COM

EXCLUSIVE OFFERING



THE
STUBBLEBINE
COMPANY

CORFAC INTERNATIONAL