



100 SIMPLEX DRIVE

WESTMINSTER, MA

66,976 SF | WORLD-CLASS MANUFACTURING/DISTRIBUTION SPACE FOR LEASE

- PROMINENT ROUTE 2 VISIBILITY
- INSTITUTIONAL QUALITY ASSET SITUATED ON A 95 ACRE PRISTINE CAMPUS
- 26' CLEAR HEIGHT
- HEAVY POWER



THE
STUBBLEBINE
COMPANY

CORFAC INTERNATIONAL

PROPERTY SUMMARY



PROPERTY DESCRIPTION

66,976 SF WORLD-CLASS 26' CLEAR MANUFACTURING / DISTRIBUTION SPACE FOR LEASE

DEMOGRAPHICS	25 MILES	50 MILES	100 MILES
Total Households	334,442	2,321,008	5,366,856
Total Population	818,441	5,705,218	12,402,038
Average HH Income	\$97,383	\$109,986	\$97,238

SPECIFICATIONS

Complex Size:	692,305 SF
Building Size:	130,000 SF
Available Space:	66,976 SF: 57,482 SF First Floor 9,494 SF Second Floor (Office)
Land Area:	95 AC
Zoning:	Industrial
Parking:	On-site for 1,593 cars
Loading:	7 Tailboard Docks 1 Drive-in Door
Ceiling Height:	26' clear
Power:	4,000 amps
Utilities:	All utilities including sewer
Heat:	Central boiler room with gas/oil fired hot water system feeding individual multi-zoned air handlers
Sprinklers:	100% Wet System
Construction:	Masonry with insulated metal panels
Lighting:	LED
Rental Rate:	Market

ADDITIONAL PHOTOS



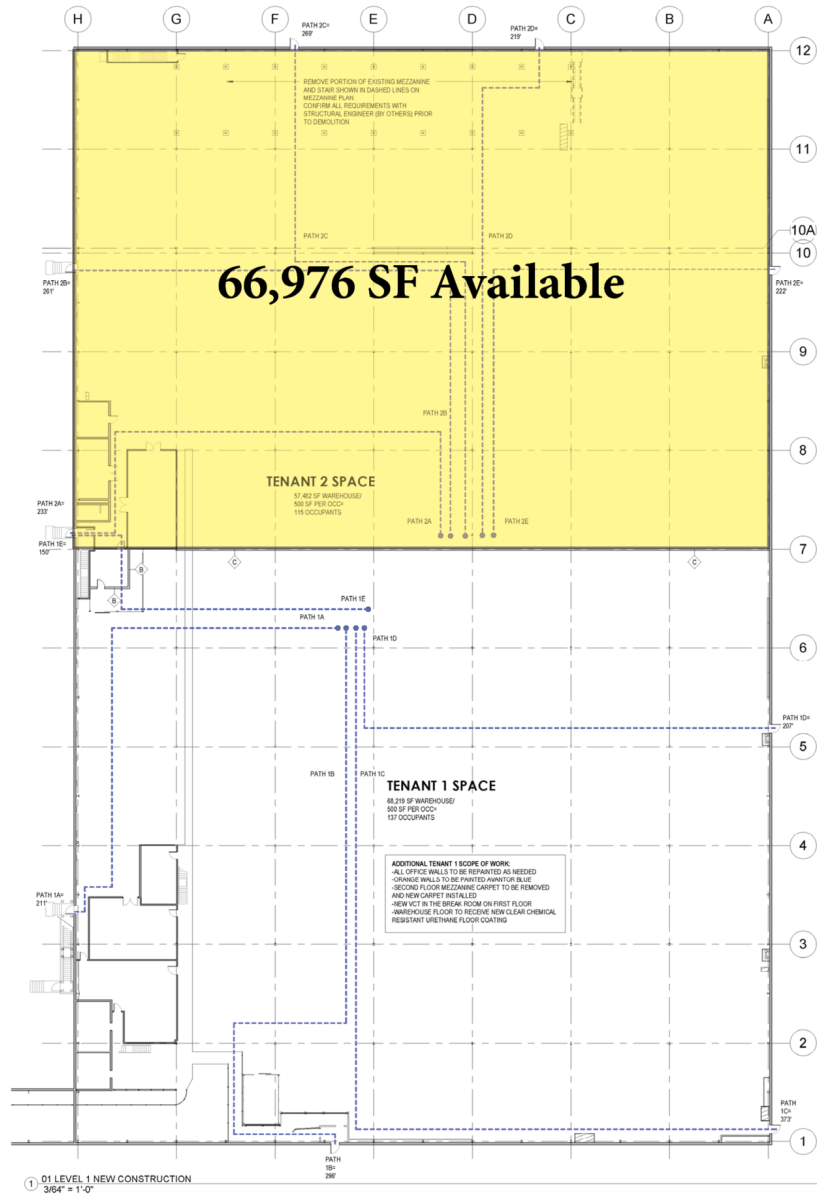
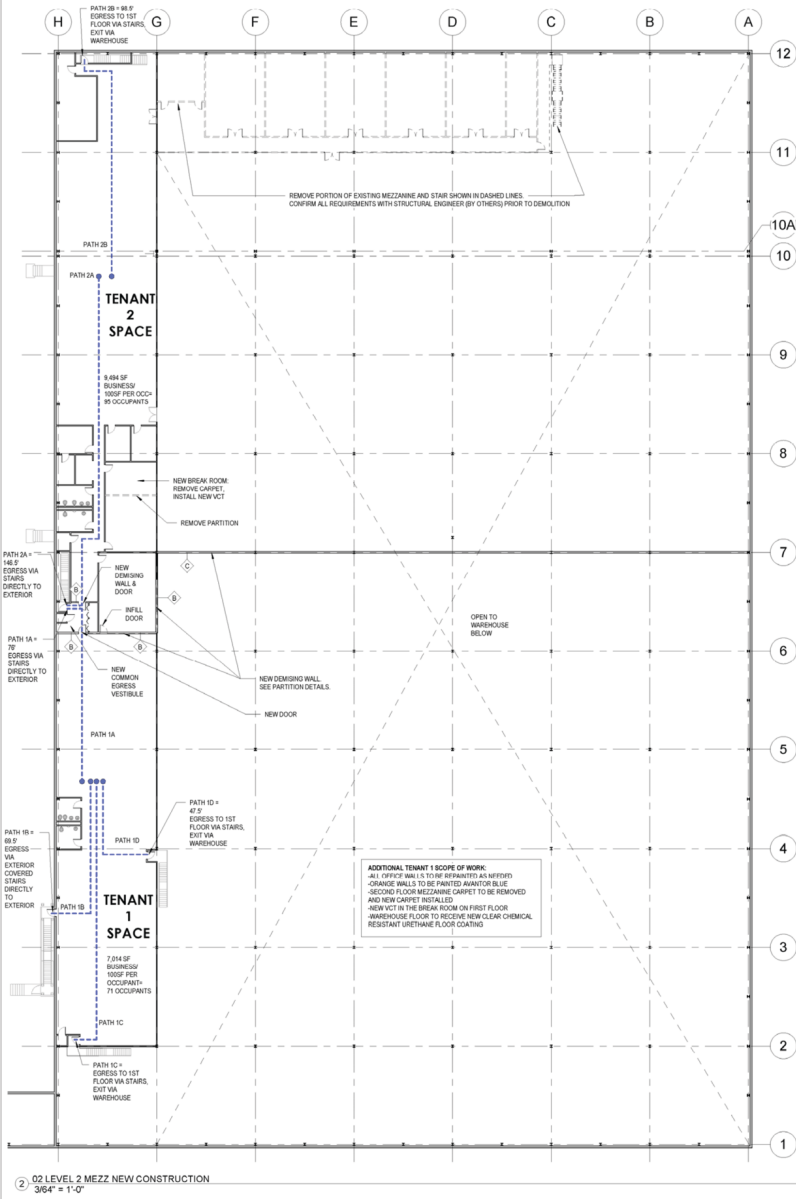
INTERIOR PHOTOS



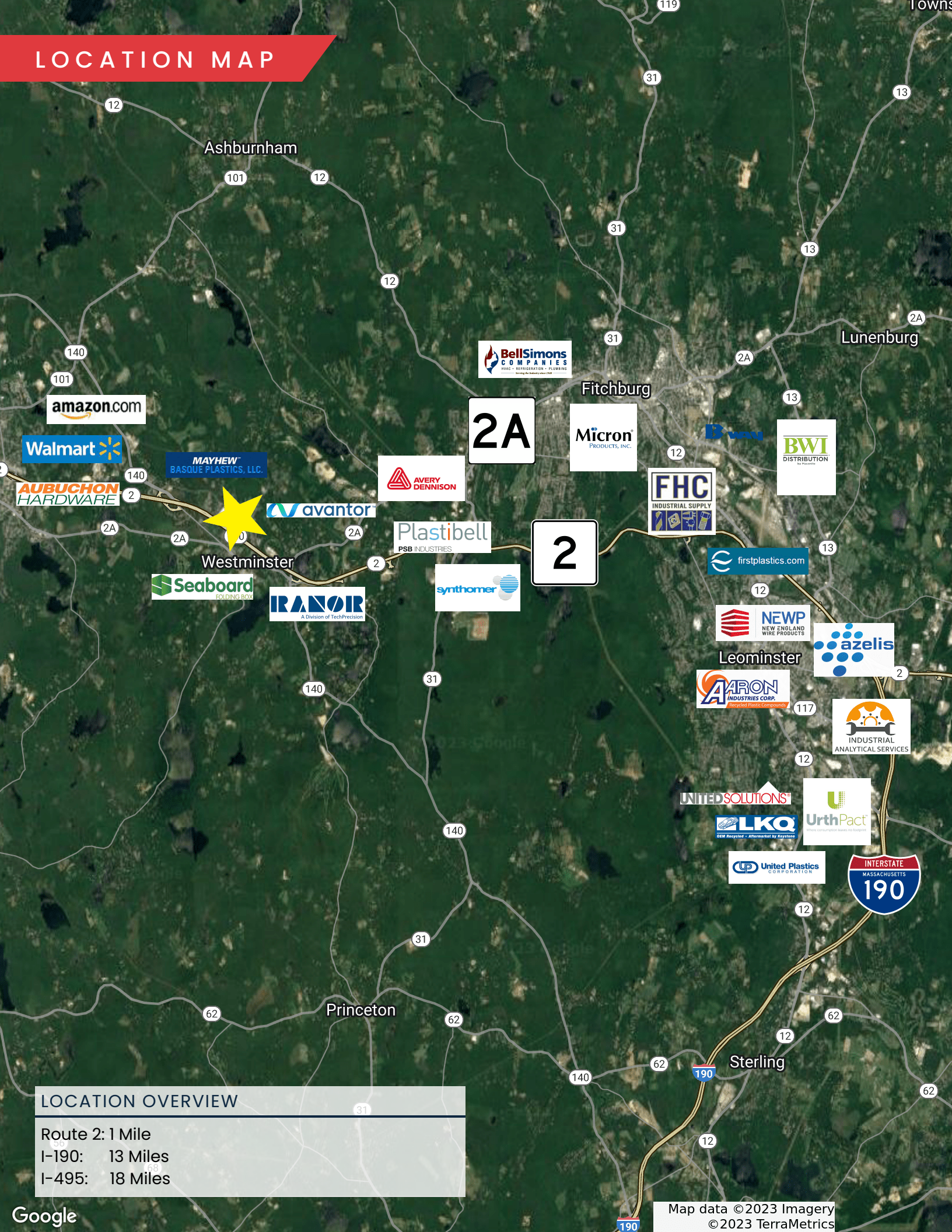
BUILDING PLAN



BUILDING PLAN



LOCATION MAP



LOCATION OVERVIEW

Route 2: 1 Mile
I-190: 13 Miles
I-495: 18 Miles

100 SIMPLEX DRIVE

WESTMINSTER, MA

65,000 SF | WORLD-CLASS MANUFACTURING/DISTRIBUTION SPACE FOR LEASE

DAVID STUBBLEBINE

617.592.3391

david@stubblebinecompany.com

JAMES STUBBLEBINE

617.592.3388

james@stubblebinecompany.com

We obtained the information above from sources we believe to be reliable. However, we have not verified its accuracy and make no guarantee, warranty or representation about it. It is submitted subject to the possibility of errors, omissions, change of price, rental or other conditions, prior sale, lease or financing, or withdrawal without notice. We include projections, opinions, assumptions or estimates for example only, and they may not represent current or future performance of the property. You and your tax and legal advisors should conduct your own investigation of the property and transaction.



**THE
STUBBLEBINE
COMPANY**

CORFAC INTERNATIONAL