

**FOR
LEASE**

84 TEED DRIVE RANDOLPH, MA

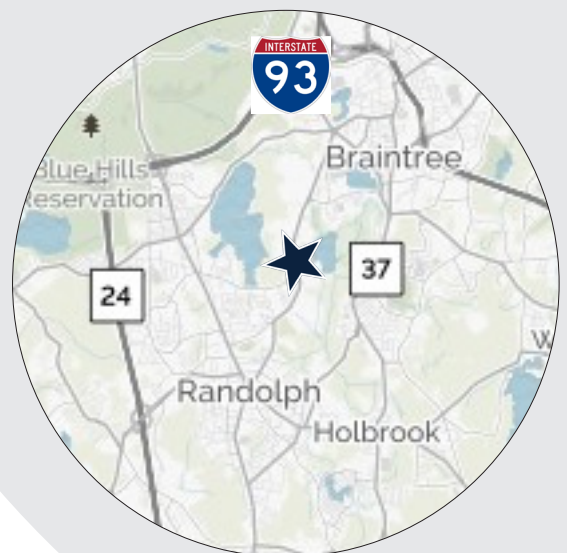


INDUSTRIAL WAREHOUSE BUILDING FOR LEASE **86,800 SF SPACE AVAILABLE**

» The Stubblebine Company/CORFAC International is pleased to present
it's appointment as the exclusive listing agent regarding 84 Teed Drive Randolph, MA.

Salient details include:

- Unique Offering: Well located modern industrial space
- Rail Spur
- High ceilings: 23'6" clear height
- Outstanding cross dock tailboard
- Loading capacity: 34 loading docks



EXCLUSIVE LISTING AGENT
THE STUBBLEBINE COMPANY
CORFAC INTERNATIONAL



PROPERTY INFORMATION

BUILDING SIZE	86,800 sf +/- of which: 66,800 sf +/- is industrial 20,000 sf +/- is office
FOOTPRINT	76,000 sf +/-
SPRINKLER	Wet
POWER	2,000 amps; 480 volt: 3 phase; 4 wire
COLUMN SPACING	40' x 40'
HEAT	Gas units (3 newer Cambridge units)
LOADING	34 loading docks and 1 over-sized drive-in door
UTILITIES	Natural gas, Town water and sewer
LAND	5.91 acres +/-
PARKING	Large paved lot
CEILING HEIGHT	23'6" clear height
TAXES	\$1.26/SF (FY 2017)



EXCLUSIVE LISTING AGENT

THE STUBBLEBINE COMPANY
CORFAC INTERNATIONAL

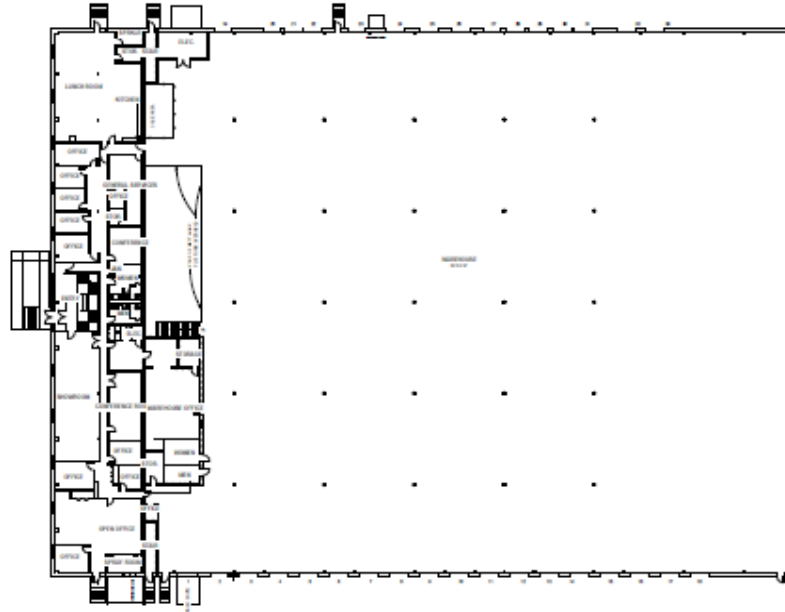
PHOTOS



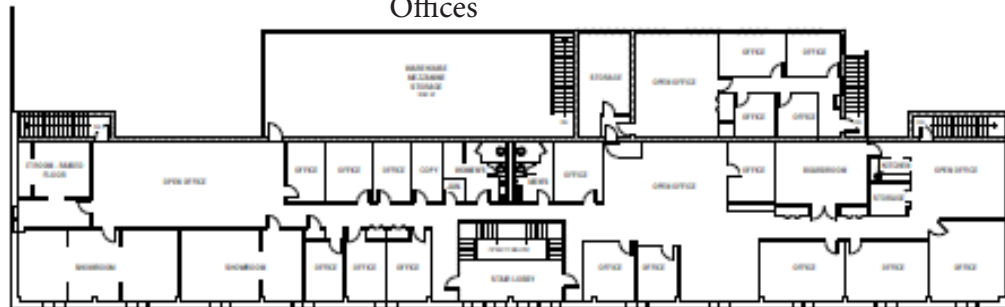
EXCLUSIVE LISTING AGENT
THE STUBBLEBINE COMPANY
CORFAC INTERNATIONAL

Floor Plans

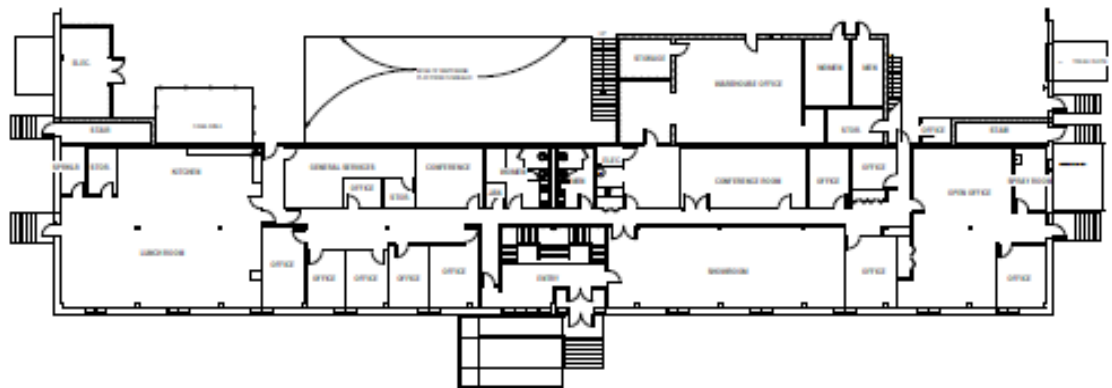
First Floor



Offices

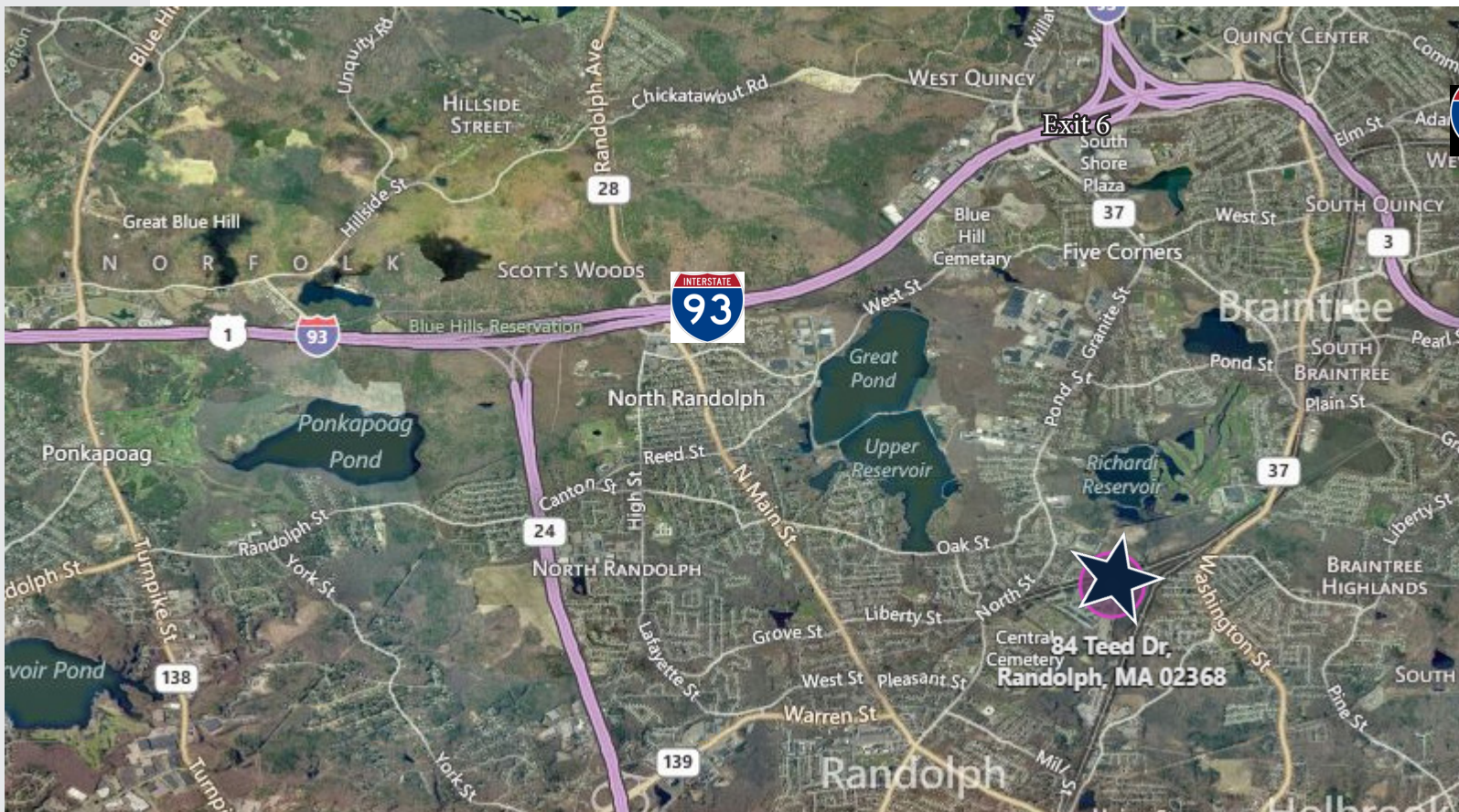


01 - SERVICE CORE



02 - OFFICE

LOCATION



EXCLUSIVE LISTING AGENT
THE STUBBLEBINE COMPANY
CORFAC INTERNATIONAL

CONTACT:

JAMES STUBBLEBINE 617-592-3388

DAVID STUBBLEBINE 617-592-3391

DAVID SKINNER 781-862-6168

CHRIS MICHNEIWICZ 774-994-1698



Information contained herein was obtained from third parties, and it has not been independently verified by the real estate brokers. Buyers/tenants should have the option of inspecting the property to verify all information. Real estate brokers are not qualified to act as agents for or select experts with respect to legal, tax, environmental, building construction, soils/drainage or other such matters.