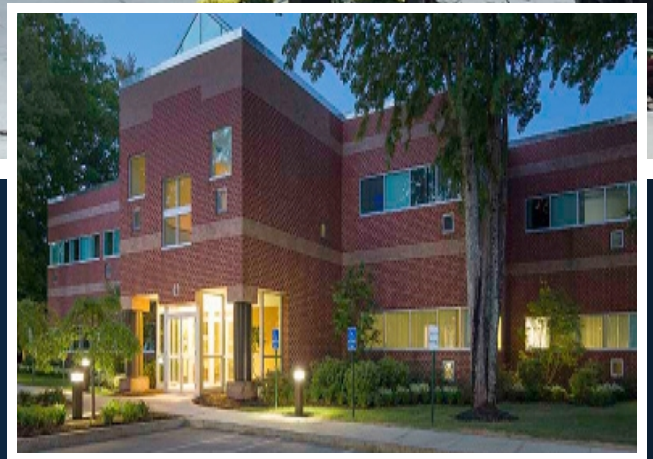


43 NAGOG PARK

ACTON, MA



23,502 SF

FIRST-CLASS OFFICE SPACE
AVAILABLE

EXCLUSIVE OFFERING



THE
STUBBLEBINE
COMPANY

CORFAC INTERNATIONAL

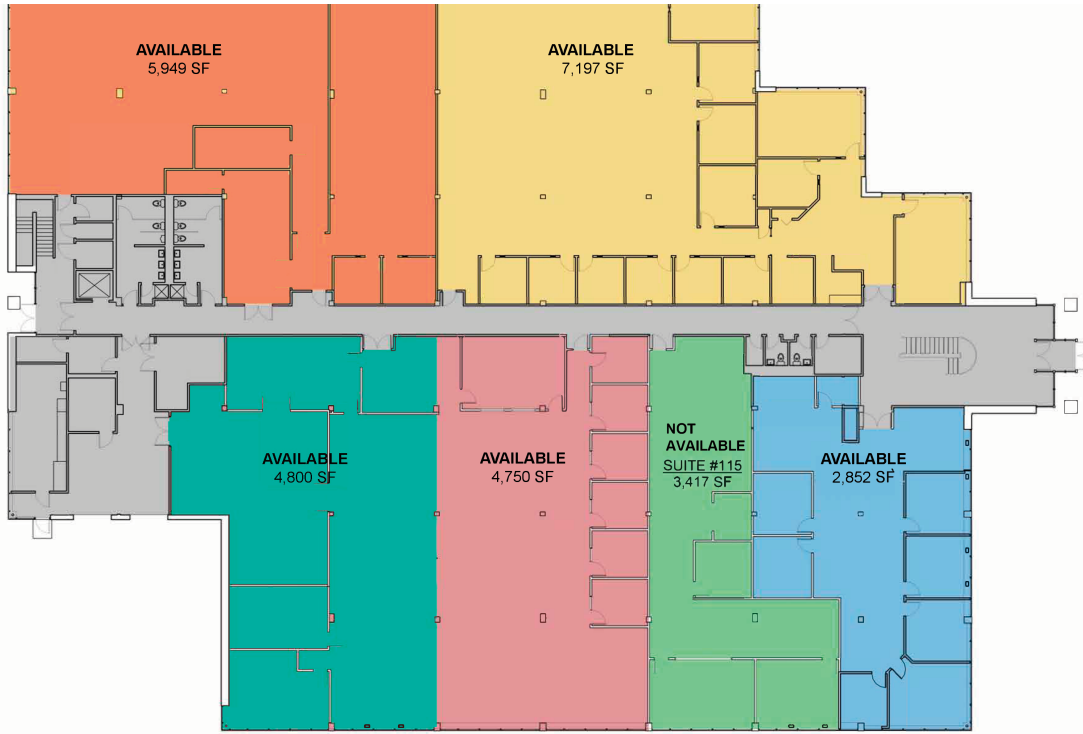
PROPERTY DETAILS & HIGHLIGHTS

BUILDING NAME	43 NAGOG PARK
PROPERTY TYPE	OFFICE
BUILDING SIZE	59,324 SF
AVAILABLE SPACE	23,502 SF
RESTROOMS	2
ZONING	GENERAL INDUSTRIAL/ OFFICE PARK 1
CLEAR HEIGHT	9'
LOADING	TWO (2) - ONE WITH LEVELERS
POWER	FOUR 120/280 VOLT 400 AMP MAINS (1,600 AMPS TOTAL)
HVAC	ELECTRIC
WATER	CITY WATER
SEWER	ON-SITE WASTEWATER TREATMENT PLANT
LIFE SAFETY	SERVICE TO BUILDING BUT NOT ALL SPACES SPRINKLERED
PARKING SPACES	261
TAXES	\$1.10/SF
SECURITY	CARD ACCESS SYSTEM FOR BUILDING TENANTS
ELEVATOR	ONE PASSENGER ELEVATOR

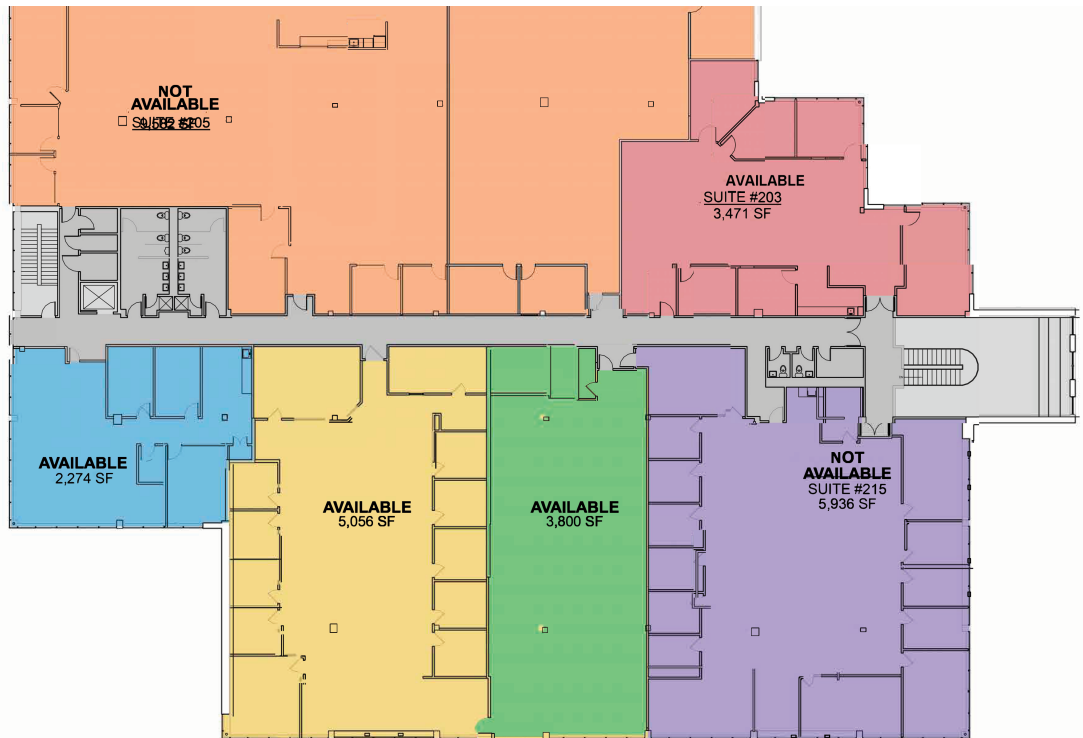


- STRATEGICALLY LOCATED IN CLOSE PROXIMITY TO I-495, ROUTE 27 AND ROUTE 2/2A
- CLOSE PROXIMITY TO NUMEROUS AMENITIES
- CORPORATE NEIGHBORS INCLUDE VERIZON, ERICSSON
- OFFERS CLASS A OFFICE SPACE WITH COMPREHENSIVE UPGRADES IN PARK

FLOOR PLANS



First Floor



Second Floor

ADDITIONAL PHOTOS



LOCATION MAPS



Map data ©2020 Imagery ©2020, CNES / Airbus, Landsat / Copernicus, MassGIS, Commonwealth of Massachusetts EOEA, Maxar Technologies, USDA Farm Service Agency

43 NAGOG PARK

ACTON, MA



CONTACT:

AARON M. RACETTE	774.279.5184	AARON@STUBBLEBINECOMPANY.COM
JAMES STUBBLEBINE	617.592.3388	JAMES@STUBBLEBINECOMPANY.COM
DAVID STUBBLEBINE	617.592.3391	DAVID@STUBBLEBINECOMPANY.COM
MICAH STUBBLEBINE	978.265.8101	MICAH@STUBBLEBINECOMPANY.COM

EXCLUSIVE OFFERING



THE
STUBBLEBINE
COMPANY

CORFAC INTERNATIONAL